

Speedometer Cable

1948-52 F1
1953-56 F100



47-2022



47-2023

PART	DESCRIPTION	APPLICATION	REQD	PRICE
47-2022	SPEEDOMETER CABLE	"A" F-SERIES 48-56	(1)	\$17.95
47-2023	SPEEDOMETER CABLE	"B" F-SERIES 53-56	(1)	\$19.95

Note: "A" For models without Fordomatic or 3-speed transmissions with overdrive.
"B" For models with Fordomatic or 3-speed transmissions with overdrive.

Dash Bulbs

1948-52 F1 F2
1953-56 F100 F250



36-0212-F

PART	DESCRIPTION	APPLICATION	REQD	PRICE
36-0212-F	BULB-INSTRUMENT CLUSTER	6V CLEAR 48-55 (AR)	(1)	\$.95
36-0218-F	BULB-INSTRUMENT CLUSTER	12V CLEAR 48-56 (AR)	(1)	\$.95
36-0214-F	BULB-HIGH BEAM INDICATOR	6V CLEAR 48-52 (1)	(1)	\$.95
36-0230-F	BULB-HIGH BEAM INDICATOR	12V CLEAR 48-56 (1)	(1)	\$.95
36-0212-F	BULB-GLOVE BOX	6V CLEAR 48-55 (1)	(1)	\$.95
36-0218-F	BULB-GLOVE BOX	12V CLEAR 48-56 (1)	(1)	\$.95

Truck Gauges ... A Functional New Look

2-1/16" Electric Short Sweep



37-8280-F



37-8281-F



37-8282-F



37-8284-F



37-8285-F



37-8286-F

PART	DESCRIPTION	APPLICATION	PRICE
37-8280-F	OIL PRESSURE GAUGE WHITE	0-100 PSI	\$29.95
37-8284-F	OIL PRESSURE GAUGE BLACK	0-100 PSI	\$29.95
37-8281-F	WATER TEMPERATURE GAUGE WHITE	100-250 DEGREES F	\$29.95
37-8285-F	WATER TEMPERATURE GAUGE BLACK	100-250 DEGREES F	\$29.95



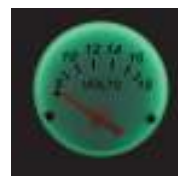
Truck Gauges are available with an Ultra White Face with Chrome Bezel or Black Face with Black Bezel and include a white bulb, wired bulb socket, green and orange light filters, mounting bracket, mounting hardware and installation instructions.

12 Volt Systems Only

- Oil Pressure Gauge reads 0-100 PSI and comes with 1/8" NPT electric sender and 1/4" NPT brass adaptor.
- Water Temperature Gauge reads 100-250°F and comes with 1/8" NPT electric sender, 3/8" and 1/2" NPT brass adaptors.
- Voltmeter Gauge reads 8-18 Volts.



Black Gauge with Orange Filter Installed



White Gauge with Green Filter Installed

PART	DESCRIPTION	APPLICATION	PRICE
37-8282-F	VOLTMETER GAUGE WHITE	8-18 VOLTS	\$19.95
37-8286-F	VOLTMETER GAUGE BLACK	8-18 VOLTS	\$19.95

Gauge Panels



38-8274-F

38-8275-F

38-8276-F

These Steel Chrome and Black Gauge Panels make mounting your gauges quick and easy; includes attaching hardware. Gauges sold separately, see above.

PART	DESCRIPTION	APPLICATION	PRICE
48-8653	CHROME 1 GAUGE PANEL	FOR 2-1/16" GAUGE	\$9.95
38-8274-F	CHROME 2 GAUGE PANEL	FOR 2-1/16" GAUGES	\$14.95
38-8275-F	CHROME 3 GAUGE PANEL	FOR 2-1/16" GAUGES	\$19.95
38-8276-F	BLACK 1 GAUGE PANEL	FOR 2-1/16" GAUGE	\$9.95
38-8277-F	BLACK 2 GAUGE PANEL	FOR 2-1/16" GAUGES	\$14.95
38-8278-F	BLACK 3 GAUGE PANEL	FOR 2-1/16" GAUGES	\$19.95

Dimmer Switch Bezel



Black

Polished

Satin

30-1266-F

PART	DESCRIPTION	APPLICATION	REQD	PRICE
38-1536-F	BEZEL-DIMMER SWITCH BLACK	ALUMINUM 48-56	(1)	\$21.95
38-1537-F	BEZEL-DIMMER SWITCH POLISHED	ALUMINUM 48-56	(1)	\$17.95
38-1538-F	BEZEL-DIMMER SWITCH SATIN	ALUMINUM 48-56	(1)	\$17.95
30-1266-F	BEZEL-DIMMER SWITCH BLACK	PLASTIC 48-56	(1)	\$2.95

USB/Auxiliary Input Extension Cable



38-8547-F

38-8548-F

USB/Auxiliary Input Extension Cable gives you a convenient location to plug in external sources. Cable is 54" long and features USB and 3.5mm auxiliary connections. Black version includes under-dash housing.

PART	DESCRIPTION	APPLICATION	REQD	PRICE
38-8547-F	USB/AUX EXTENSION CABLE-BLACK	F-SERIES 48-56	(1)	\$29.95
38-8548-F	USB/AUX EXTENSION CABLE-CHROME	F-SERIES 48-56	(1)	\$29.95