

Your Catalog of Accessories & Parts for  
**Ford Expedition**  
1997-06

2024 EDITION Vol. 1 **FEP.54**



**"Keeping Generations On The Road"®**

Prices Valid From February 15, 2024 Through May 15, 2024

**LMCTRUCK.com**  
**(800) 562-8782**

Retail Delivery Fee Notice

Some states are starting to pass legislation requiring us to collect a Retail Delivery Fee on shipments. Check with your state’s department of revenue for more information.

For those customers living in states that require this, the extra fee will be added to each purchase that is taxable under the state code.



What You Need to Know Before Ordering:

We are excited that you’ve decided to make us a part of your journey! Whether you are rebuilding from the ground up or just adding some distinctive touches to your vehicle, we are proud to give you a hand.

In addition, we’d love to see what you’ve been up to with your projects, so please log on to [lmctrucklife.com](http://lmctrucklife.com) and share your stories and pictures.

Understand that we are not trained automotive technicians. We want you to consult with mechanics regarding technical advice. Technical information is also included in the workshop manuals shown in this catalog. Please take the time to consult these resources if you feel you need to.

On those occasions that we’ve run out of a part on your order, chances are that it’s already on its way to us. These items are listed as backordered on your invoice and will be sent your way as soon as possible. If you’re not interested in waiting for your backordered product, just call our customer service line at (800) 222-5664, and we will cancel it and refund any money that has been paid.

You can also write “No Backorders” on your order form before you send it to us, and we’ll make sure only to ship the products we currently have in stock.

Some parts have extra charges. Please consult below to make sure you understand these charges and so you aren’t surprised later.

Part Number Definitions

- T - After a part number means that part must be shipped Truck Freight. The prepaid order will include a \$150.00 charge for delivery in the 48 contiguous United States. Orders outside of 48 states will be quoted. Due to packing and/or transportation requirements, please allow additional time for delivery.
- \* - After the sell price means Oversize Part Charge. Your order will incur a charge of \$20.00 for each oversized part. Due to packing and/or transportation requirements, please allow additional time for delivery. Oversized Parts are not available for air delivery.
- \*\* - After the sell price means Oversize Part Charge. Your order will incur a charge of \$50.00 for each oversized part. Due to packing and/or transportation requirements, please allow additional time for delivery. Oversized Parts are not available for air delivery
- R - After a part number means Remanufactured Part. No core charge.

And one more thing, the part our lawyers make us say: We reserve the right to refuse service or shipment to anyone. We reserve the right to collect a service charge of \$20 for a returned check and to hold any shipments until the fee is collected.

Thank you for your support. Best of luck with all your projects!

What You Need to Know Before Returning:

If only we lived in a perfect world! Unfortunately, we don’t, and things can go wrong. When that happens, we do our best to try to make things right again. But we need your help as well.

All returns must be in like new condition and in the original packaging. Please include a copy of your invoice, as that will make the process quick and easy.

We refund your payment the same way you paid. Refunds of less than \$1 will not be made except by customer request.

We can’t be responsible for damages, so please package your returned items carefully.

If you can ship the item back to us ground or USPS within the 48 contiguous United States, you don’t need to call for authorization. Just send it to us at:

**17301 W. 113th St, Lenexa, KS 66219**

If we shipped you the wrong item, send it back, and we’ll send the right item and reimburse you the ground rate for your return.

We can’t accept anything that has been installed (unsuccessful attempts do count), disassembled, drilled, welded, cut, painted, or modified in any way, so please make sure to check and doublecheck the fit before starting any work.

If you are returning a kit, it needs to contain all the parts you received. No partial kits may be returned.

Electronic media (CDs, DVDs) cannot be refunded once they are opened. However, if it is not working properly, it can be exchanged for the same part number.

Please call our customer service line for a return authorization if your part was delivered outside of the 48 contiguous United States.


If you want to return something you bought over a year ago, please call our customer service line for return authorization.

You must call Customer Service when returning a Truck Freight item.

Customer Service Line: (800) 222-5664  
¿Habla Español? (855) 456-2288

A 20% non-refundable restocking fee will be added to anything that’s over a year old (unless the extended manufacturer warranty is still in effect, of course) as well as to any unauthorized Truck Freight returns.

And the legal part again: We have the right to refuse any return we deem unfit for resale. We also have the right to refuse any shipments where the shipping charges, duties, customs, etc., are not prepaid.



**California Prop 65 Warning**

**WARNING:** This product can expose you to chemicals including lead, which is known to the State of California to cause cancer. For more information, go to [www.p65warnings.ca.gov](http://www.p65warnings.ca.gov).

**ADVERTENCIA:** Este producto puede exponerlo a sustancias químicas, incluido el níquel reconocido por el estado de California como causante de cáncer. Para obtener más información, visite [www.p65warnings.ca.gov](http://www.p65warnings.ca.gov).

Gift Cards



- Gift Cards are the perfect gift to ensure you are giving exactly what they want!
- Gift Cards don't expire.
- Orders must be pre-paid. Orders received before 3:00 p.m. Central Time will ship same day.
- Gift Cards can now be redeemed through the mail or by phone.



I have a picture in my office. It was an aerial photograph taken in the '60s of the farm we lived on in rural Iowa. To be exact, RR1, Anamosa, IA, before every address had a house number and a private line telephone. We had a party line phone with 8 people on it, well, that is a whole letter to itself along with the Sears and Roebuck catalog, that had everything from toys to a house you could buy and build.

It was a thing back then, and still is now, that a plane flies over, takes a picture and then sells it to you. We aren't going to get into the right or wrong of that idea right now. Instead I am going to say I am grateful that day they flew over and my parents somehow had the money to buy that picture.

It hangs in my office alongside the serenity prayer. It is there to remind me of who I am and where I come from. That my mom and dad somehow raised 5 kids in a 2-bedroom house until Uncle Dewayne converted the garage to a bedroom for them in the late '60s. That you can exist without a shower and only a bathtub, that you got three TV stations if the rabbit ears were just right and wrapped in aluminum foil, and the only thing you were allowed to watch were Gunsmoke, Rawhide, and Wild Kingdom. Oh, and can't forget The Andy Williams Show. That Sunday morning was church and then grandma's fried chicken and gravy. My grandmother was younger then than I am now. I hadn't really thought about that until I started typing out this letter.

The picture is before my grandfather put the orchard in for them and the feed lot went in. It had to be the early '60s that this picture was taken. Before mom let me put in my own flower beds and I went into the woods and dug up what I wanted to plant and tried to graft or cross-pollinate. Before my mom and I had our first and only big fight over Vietnam. I was a pacifist and plant-loving, earth-loving girl, even back then, who drove her dad's old truck long before I was old enough because the sheriff would just know I was Harold's daughter.

I have been nostalgic lately. I think it is because I turn 69 in January and have outlived my parents and two of my brothers. My parents died young. My dad was only 58, so when you are older than your parents were when they died, your brain can overthink things.

At every level I know I have a great life, with two daughters with beautiful families, and I have been truly blessed. But deep in my heart I am still that young pacifist, plant-loving, earth-loving girl who just wants to garden and drive the old truck. The shorter, colder days were always my time to slow down and think about my next chapter, until COVID, and then it was just hurry and scramble and work. This year I am taking time off work to reflect and make decisions about my last chapter. I want to go into the woods, find the plants that only grow there, and try them in my wildflower garden. I want to drive the '72 Cheyenne into "town" with my grandsons to get ice cream. I will never leave LMC or sell it, but it is time for me to enjoy and spend more time with my grandchildren and daughters. Maybe only work 50 hours a week!

*Becky*

"Keeping Generations On The Road"®

## CONTACT US

CALL USA & CANADA: **(800) 562-8782**

¿Habla Español? **(855) 456-2288**

<b>Ordering Hours:</b>	Central Time	<b>Customer Service:</b>	(800) 222-5664
<b>Monday - Friday:</b>	7:00 a.m. - 8:00 p.m.	<b>Fax:</b>	(800) 541-8525
<b>Saturday:</b>	8:00 a.m. - 6:00 p.m.	<b>Kansas City:</b>	(913) 492-8756
<b>Sunday:</b>	Closed	<b>International Orders:</b>	1 (913) 541-0684
		<b>International Fax Orders:</b>	1 (913) 599-0323

Shop Online  
**LMCTRUCK.com**

LMC TRUCK is in no way affiliated with the Ford Motor Company nor do we intend to imply that. The name Ford is used for reference only.

Applications listed in this catalog are based on original factory information. However, variances will occur due to non-documented substitutions, and changes made during the vehicle's production.

Long Motor Corporation © Copyright 2024

Effective: February 15, 2024

FEP.54 Vol. 1, First Printing. This edition supersedes all previous publications, including prices. We reserve the right to change our prices at any time, without notice. All rights are reserved. No part of this publication may be copied, reproduced, stored in any retrieval system, communicated or transmitted in any form or by any means: photocopying, electronic recording or otherwise, without prior written permission.

**Bumpers**  
Pages 6-8

**Custom Grille**  
Page 10

**Grilles / Emblems**  
Pages 11-12

**Body Parts / Struts**  
Pages 9, 12, 14-15

**Cowl Induction Hoods**  
Page 13

**Door Parts / Mirrors**  
Pages 16-17

**Exterior Rubber**  
Page 17

**Manuals / DVDs**  
Page 19

**Engine**  
Pages 20-23, 25

**Steering**  
Page 24

**Suspension / Brakes**  
Page 24, 26

**Exhaust**  
Page 27

**Electrical**  
Pages 28-29

**Stock Lighting**  
Pages 30-31, 35

**Custom Lighting**  
Pages 30, 32-34

**Exterior Accessories**  
Pages 36-38, 41

**Wheels**  
Page 39

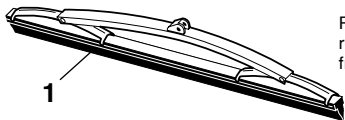
**Hats**  
Page 42

**Interior**  
Pages 40, 42-44



# How to Use this Catalog

## Example: Wiper Blades



Please Note: Product drawings are only representations. Products supplied may vary from illustrations in this catalog.

**ALL ITEMS ARE PRICED EACH IN THIS CATALOG.**

PART	ILL#	DESCRIPTION	APPLICATION	REQD	PRICE
47-3991	(1)	WIPER BLADE-FRONT	EXPEDITION 97-02 (2)		\$3.95

### Part Number Definitions

**-T** After a part number means that part must be shipped Truck Freight. The prepaid order will include a \$150.00 charge for delivery in the 48 contiguous United States. Orders outside of the 48 states will be quoted. Additional delivery time required.

**-R** Remanufactured Part - No core charge.

<b>A</b>		
A-Arm Assemblies	26	
A-Pillar Gauge Pods	43	
A/C Disconnect Tool Set	21	
ABS Speed Sensor	29	
AC Bypass Pulleys	23	
Adhesive Spray, LOCTITE	18	
Adhesive Tape Strips, 3M	18	
Adhesive/Stripe Eraser Wheel	9	
Air Cleaner Clamps	21	
Air Deflector	22	
Air Door	23	
Ambient Air Temp Sensor	29	
Antenna, Amplified Hide-Away	40	
Anti-Seize Stick, LOCTITE	18	
Auto Belt Tensioner	23	
Auto Locking Hub Actuator	25	
<b>B</b>		
Backup Light Bar, LED	33	
Battery Disconnect Switches	28	
Battery Post & Terminal Cleaner	28	
Battery Tap Kit	28	
Battery Tray & Parts	28	
Belt Molding Remover Tool	16	
Blind Spot Mirror	17	
Blower Motor, Heater	23	
Body Gap Filler Set	9	
Body Panel Alignment Shims	9	
Books	19	
Brake Master Cylinder Cap	24	
Brake Pedal Pad	42	
Brake Shoe Adjustment Tool	24	
Bug Shield	36	
Bug Shields, Chrome	36	
Bulb Tool, Remove & Install	35	
Bumper & Parts	6-8	
Bumper Brace	6-7	
Bumper Brackets	6-7	
Bumper Fog Light	34	
Bumper Pad	6-8	
<b>C</b>		
Center Caps, Wheel	39	
Clutch Pedal Pad	42	
Coil Spring Compressor Tool	26	
ColorBond Products	19,38	
Control Arm Bushing, Poly	26	
Cooler, Ford Vintage	41	
Cowl Induction Emblem Set	13	
Cowl Panel, Hood	13	
Cowl Vent Plug	15	
Cup Holder Insert	44	
Custom Bulbs	30-34	
Custom Headlights	32-33	
<b>D</b>		
Dash Cover Set	42	
Dash Gauges & Parts	43	
Dash Parts	43	
Dash Protector, Velour	43	
Decals	11	
Dielectric Grease, LOCTITE	18	
Differential Cover, Chrome	25	
Differential Lock Kit, Front	25	
Disc Brake Pad Sets	24	
Disc Brake Shield, Rear	24	
Door Fastener Removal Tool	16	
Door Handles & Parts	16	
Door Handles, Outside	16	
Door Hinges & Parts	17	
Door Lock Actuator	17	
Door Lock Switch	29	
Door Mirror & Parts	17	
Door Mirror Cover Set, Chrome	17	
Door Open Warning Switch	29	
Door Window Glass Holder	16	
Drain Tap, Radiator	22	
Driving Light Set, Bumper	34	
DVDs, Kevin Tetz, Paintucation	19	
<b>E</b>		
EGR Vacuum Control Solenoid	21	
Electrical Parts	40	
Electronic Musical Horn	40	
Emblem Set, Cowl Induction	13	
Emblems	13	
Engine Block Heaters	21	
Engine Decals	11	
Exhaust Header Wrap	27	
Exhaust Manifold Gasket	22	
Exhaust Manifolds	22	
Exhaust Tips, Chrome/SS	27	
Exterior Trim Paint	19	
<b>F</b>		
Fan Shroud, Radiator	22	
Fan Switch	23	
Fastener Removal Tool	16	
Fender Liner	12	
Filler Cap, Oil	21	
Flare Tool Set, SAE	27	
Flasher	29	
Flex Edge Steel	9	
Flip Socket Set	39	
Floor Mats, Rubber	44	
Fog Light & Parts	31,34	
Fog Light Assembly	31	
Fog Light, Custom	34	
Ford Decals	11	
Ford Emblems	11	
Front Bumper, Chrome	6-7	
Front Fender	12	
Front Wheel Bearings	25	
Fuel Door Skin Kit, Chrome	38	
Fuel Line Disconnect Tool Set	21	
Fuel Line Retainers	21	
Fuel Pump Driver Module	23	
Fuel Pump Shutoff Switch	29	
Fuel Vapor Pressure Sensor	29	
<b>G</b>		
Gas Cap, Locking	23	
Gas Caps	23	
Gas-Charged Shocks, HD	26	
Gasket Sealant, LOCTITE	18	
Gauge Needle Paint	43	
Gauge Overlays, White Face	43	
Gauge Panels	43	
Gauge Pods, A-Pillar	43	
Gauges & Parts	43	
Glass & Windshield Sealant	18	

## Listing Explanation:

Explanation of policies is on pages 2 and 45.

**PART:** The part number you order, i.e. #47-3991.

**ILL #:** Illustration reference number, i.e. (1) is the Wiper Blade.

**DESCRIPTION:** Name of part, i.e. Wiper Blade.

**APPLICATION:** Model and year part fits, i.e. Expedition 1997-02.

**REQD:** Quantity of the part required for one truck, i.e. two (2) Wiper Blades are required for one truck.

**PRICE:** The low price you pay for one part, i.e. Wiper Blade is \$3.95, making your total net cost \$7.90 + Delivery & Handling for two Wiper Blades required for one truck.

\* Or \*\* after the sell price means your order will incur an Oversize Part Charge for each oversized part. \* Means extra charge will be \$20. \*\* Means extra charge will be \$50. Due to packing and/or transportation requirements, please allow additional time for delivery. Oversized Parts are not available for air delivery.

Gloves, Disposable	38	License Lamp Lens	8,35
Grease Cap	25	License Plate Bolt Set, LED	34
Grille & Parts	10-12	License Plate Bracket	6-7
Grille Baffle	12	License Plate Lamp Harness	8,35
Grille Emblem	11	Liftgate Bumper	15
Grille Hardware Kit	12	Liftgate Parts	15
Grille Reinforcement Panel	11-12	Liftgate Strut	15
Grille Support	12	Light Wiring Kit	34
Grille, Bar Style	10	Lighting	30,32-35
Grille, Custom	10	Lighting, Custom	30,32-33
<b>H</b>		LOCTITE Products	18
Hair Pin Style Hood Pin Set	36	Lubricants & Adhesives	18
Halogen Bulbs	30,34	Lug Nuts	39
Hand Riveter Set	16	<b>M</b>	
Harmonic Balancer Installer	22	Magnetic Glove Dispenser	38
Harmonic Balancer Puller	22	Mass Air Flow Sensors, JET	20
Harness, HD Headlight	32	Master Cylinder Brake Lines	24
Hats W/Embroidered Logo	42	Mirror Switch	29
HAYNES Manuals	19	Mirror, Door	17
Header Bolt Set	27	Mirror, Rear View	42
Header Gasket Sets	27	Mud Flaps W/Logo	37
Header Wrap	27	Mud Guards	37
Headlight & Parts	30-31	Musical Horn System	40
Headlight Assemblies	30	<b>O</b>	
Headlight Knob	29	Oil Drain Valve, EZ	21
Headlight Retainer	30	Oil Pressure Gauge	43
Headlight Switch	29	Oil Pressure Switch	29
Heat & Sound Insulation	44	Overdrive Shift Button	24
Heated Windshield Washer Kit	28	Overflow Cap, Radiator	22
Heater Core & Parts	23	<b>P</b>	
Hitch Ball Mounts	41	Paint Protection Film	8
Hitch Balls, Chrome	41	Paintucation DVD's, Kevin Tetz	19
Hitch Pin & Clip	41	Panel & Trim Removal Tool Set	9
Hood	12-13,15	Parking Brake Hardware Kit	24
Hood Bumpers	15	Parking Brake Release Switch	29
Hood Hinges	15	Parklight & Parts	30,32
Hood Insulation Kit, ABS	13	Parklight Assemblies	30
Hood Insulation Retainer	15	Parklight Set, Custom	32
Hood Latch & Parts	15	Pedal Pads & Parts	42
Hood Lift Strut	15	Penetrating Graphite Powder	18
Hood Pin Set, Hair Pin Style	36	Permatex Orange Threadlocker	18
Hood Protection Film	8	Pillar Post Trim Kit, Chrome	38
Hood Release Cable	15	Pitman Arm Puller	22
Hood Scoop, Steel	37	Plug Weld Pliers	9
Hood to Cowl Seal	17	Polishing Kit, Deluxe	38
Hood, Cowl Induction	13	POR-15 Restoration Products	14
Hood, Steel	12-13	Projector Headlights	33
Hoop Steps	37	Pry Bar Set, Plastic	16
Horns	40	<b>Q</b>	
Hose Clamps, SS, Ford Logo	20	Quad 4 Amplifier	40
<b>I</b>		<b>R</b>	
Ignition Cylinder W/Keys	29	Radiator Core Mounting	22
Ignition Switch	29	Radiator Overflow Tank	22
Insulation Material	44	Radiator Parts	22
Interior Parts	40,42-44	Radiator Support	12,22
<b>K</b>		Radio Speaker	40
Key Fob	39	Rear View Mirror	42
Key Fob Case	39	Riveter Set	16
Knobs, Heater Control	23	Rocker Panel Protection Film	8
KYB Shock Absorbers	26	Rocker Panel Trim	38
<b>L</b>		RTV Red, LOCTITE	18
Lamp Bulbs	8,30-35	Rubber Floor Mats	44
LED License Plate Bolt Set	34	Rubberized Undercoating	18



## S

Sealants & Adhesives	18
Seam Sealer	18
Seat Heater Kit	44
Selector Switch, Heater	23
Sheet Metal & Flex Edge Steel	9
Sheet Metal Plugs	9
Shift Fork Kit	25
Shift Lever	24
Shift Tube Kit	24
Shims, Body Panel Alignment	9
Shock Absorbers, KYB	26
Shorty Headers	27
Sound & Heat Insulation	44
Sound Control Mat	44
Spark Plug Boot Sleeves	27
Speaker, Stereo	40
Speed Control Switch	29
Spot Weld Cutter	9
Spray Adhesive, LOCTITE	18
Spray Nozzles	28
Starter Solenoid	20
Steering Column Parts	24
Steering Wheel Puller	24
Stereo Equipment	40
Stop Lamp Switch	29
Strip Caulk	18
Subwoofer, Powered	40
Superwhite Bulbs	30-34
Suspension Parts	26
Switch-Ball Set	41
Switches	24,28-29

## T

Tail Light & Parts	35
Temperature Gauge	43
Temperature Switch	23
Third Brake Light & Parts	35
Thread Sealant	18
Throttle Body Spacer	20
Tie Rod End Boot, Poly	25
Tire Black, ColorBond	38
Tool Set, Panel & Trim Removal	9
Transmission Filter Kit	22
Transmission Oil Cooler	22
Trim Paint, Exterior	19
Tube Cutter, Mini	27
Turn/Wiper Switches	24,29

## U

Underhood Lamp	15,35
Underhood Paint, Black	19

## V

Vacuum Actuator Hub Delete Kit	25
Vacuum Cap Assortment, Rubber	21
Valance, Front	7
Valve Stem Cap Set, Tire	39
Vinyl Edge Sealer Pen	18
Voltmeter Gauge	43

## W

Water Pump Outlet Tube	23
Water Temperature Gauge	43
WeatherPak Wire Extractor Tool	41
Weatherstrip Adhesive	18
Wheel Bearing Grease Packer	25
Wheel Cover Set, Chrome	39
Wheel Lock Set	39
Wheels	39
White Face Gauge Overlays	43
Window Switch, Power	29
Windshield & Glass Sealant	18
Windshield Seal, Upper	17
Windshield Washer Kit	28
Wiper Arm Tool	28
Wiper Arms	28
Wiper Blade	28
Wiper Motor & Parts	28
Wiper Transmission Linkage	28
Wire Harness Retainer	20
Wire Retainers	20
Wire Terminal Extractor Tool	41
Wiring Grommet Assortment	40
Wiring Harness	41
Workshop Manuals	19

## Vehicle ID Number (VIN)

**Expedition 1997-06**

The VIN plate is mounted on the driver's side of the instrument panel and is visible through the windshield.

**1F M E U18 L X V K B69,783**

### World Mfr. Identifier

1F = Ford Motor Company USA  
2F = Ford Motor Company Canada  
3F = Ford Motor Company Mexico

### Model Type

M = SUV

### GVWR Code\*

B or U = 3,001 to 4,000 F or P = 7,001 to 8,000  
C or Y = 4,001 to 5,000 G or V = 8,001 to 8,500  
D or Z = 5,001 to 6,000 H or N = 8,501 to 9,000  
E or R = 6,001 to 7,000 J or S = 9,001 to 10,000

\*Due to varying options available GVWR code was changed for certain model years.

### Series Code

U17 = 2WD Expedition (EXPED) 1997-99  
U18 = 4WD Expedition (EXPED) 1997-99  
U13 = 2WD Expedition XLS (EXPED) 2004-06  
U14 = 4WD Expedition XLS (EXPED) 2004-06  
U15 = 2WD Expedition XLT (EXPED) 2000-06  
U16 = 4WD Expedition XLT (EXPED) 2000-06  
U17 = 2WD Expedition Eddie Bauer & King Ranch (EXPED) 2000-06  
U18 = 4WD Expedition Eddie Bauer & King Ranch (EXPED) 2000-06  
U19 = 2WD Expedition Limited (EXPED) 2005-06  
U20 = 4WD Expedition Limited (EXPED) 2005-06

### Engine Code

#### 1997-98

W = V8 4.6L MFI (Romeo plant)  
6 = V8 4.6L MFI (Windsor plant)  
L = V8 5.4L MFI (Windsor plant)  
N = V8 5.4L MFI

#### 2001-04

W = V8 4.6L MFI (Romeo plant)  
L = V8 5.4L MFI (Windsor plant)

#### 1999-00

W = V8 4.6L MFI (Romeo plant)  
6 = V8 4.6L MFI (Windsor plant)  
L = V8 5.4L MFI (Windsor plant)

#### 2005-06

5 = V8 5.4L MFI

### Check Digit (internal usage)

### Model Year Code

V = 1997 X = 1999 1 = 2001 3 = 2003 5 = 2005  
W = 1998 Y = 2000 2 = 2002 4 = 2004 6 = 2006

### Assembly Plant

B = Oakville, Ontario-Canada J = Monterrey, Mexico S = Allen Park  
C = Ontario-Canada K = Kansas City T = Edison  
D = Ohio L = Michigan U = Louisville  
E = Kentucky M = Cuautitlan, Mexico V = Valencia  
H = Lorain N = Norfolk Z = St. Louis  
I = Ipiranga, Brazil P = Twin Cities

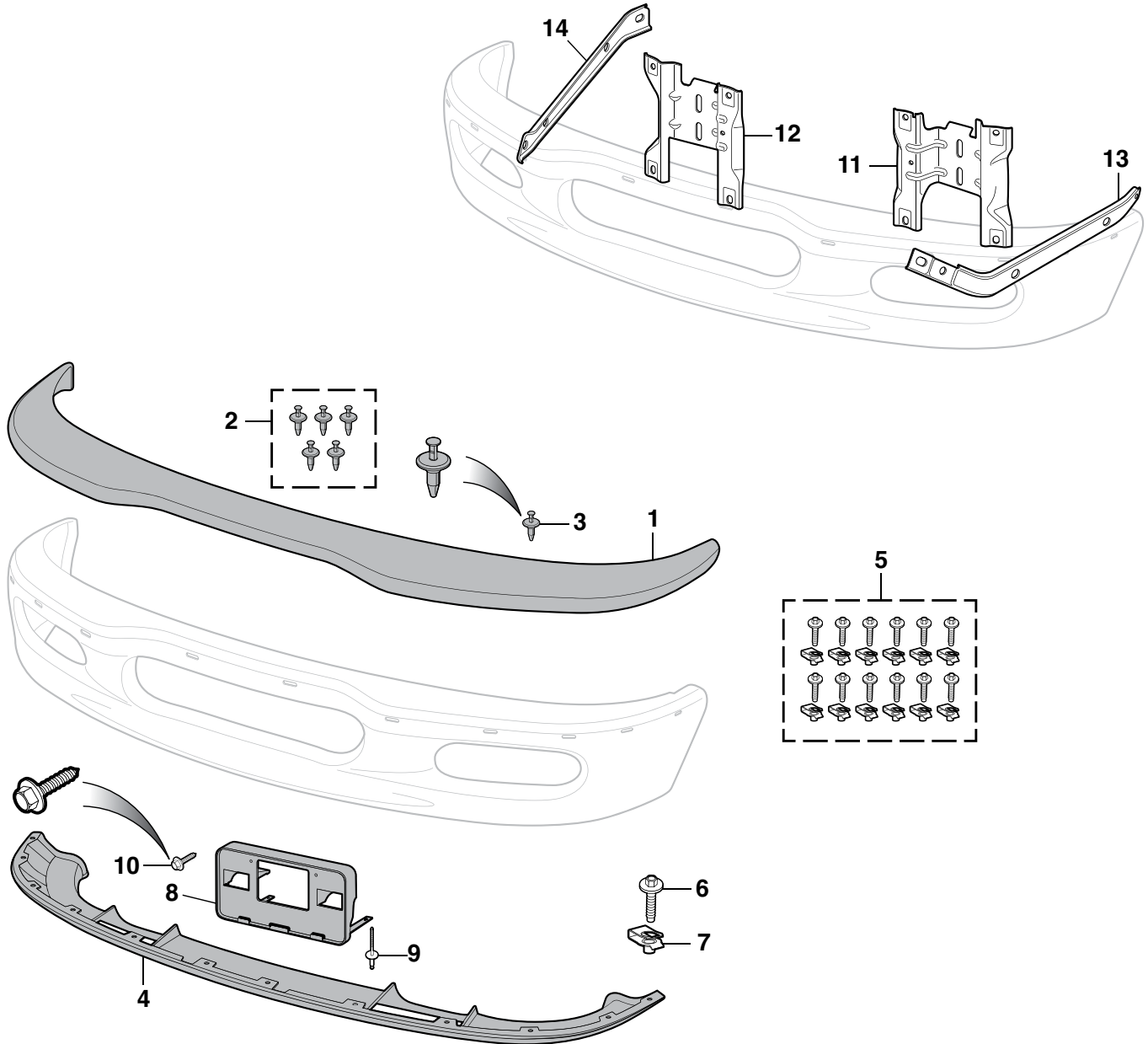
### Numerical Sequence of Assembly

## 1997-06 Engine Identification

Year	VIN			Liters		
1997-98	W	V8	4.6L	SOHC	MFI W/EEC-V	EXPD
	6	V8	4.6L	SOHC	MFI W/EEC-V	EXPD
	L	V8	5.4L	SOHC	MFI W/EEC-V	EXPD
	N	V8	5.4L	SOHC	MFI W/EEC-V	EXPD
1999	W	V8	4.6L	SOHC	MFI W/EEC-V	EXPD
	6	V8	4.6L	SOHC	MFI W/EEC-V	EXPD
	L	V8	5.4L	SOHC	MFI W/EEC-V	EXPD
Year	VIN			Liters		
2000	W	V8	4.6L	SOHC	MFI W/EEC-V	EXPD
	6	V8	4.6L	SOHC	MFI W/EEC-V	EXPD
	L	V8	5.4L	SOHC	MFI W/EEC-V	EXPD
2001-04	W	V8	4.6L	SOHC	MFI W/EEC-V	EXPD
	L	V8	5.4L	SOHC	MFI W/EEC-V	EXPD
2005-06	5	V8	5.4L	SOHC	MFI W/EEC-V	EXPD

**Front Bumper Components**

1997-98 Expedition



PART	ILL#	DESCRIPTION	APPLICATION	REQD	PRICE
40-3791	(1)	BUMPER PAD-BLACK	EXPEDITION 97-98 (1)		\$30.95**
40-3790		BUMPER PAD-PAINTABLE	EXPEDITION 97-98 (1)		\$29.95**
40-0147	(2)	BUMPER PAD HARDWARE KIT	EXPEDITION 97-98 (1)		\$3.50
40-1392	(3)	RETAINING PIN	EXPEDITION 97-98 (5)		\$.85
49-9484	(4)	VALANCE	"A" EXPEDITION 97-98 (1)		\$19.95**
40-0720	(5)	VALANCE HARDWARE KIT	EXPEDITION 97-98 (1)		\$21.95
40-0539	(6)	BOLT W/WASHER	EXPEDITION 97-98 (12)		\$1.25
40-0940	(7)	U-NUT	EXPEDITION 97-98 (12)		\$.95

Note: "A" With tow hook cut-outs.

PART	ILL#	DESCRIPTION	APPLICATION	REQD	PRICE
49-9591	(8)	LICENSE PLATE BRACKET	EXPEDITION 97-98 (1)		\$17.45
40-1369	(9)	RIVET-BRACKET	EXPEDITION 97-98 (2)		\$1.25
40-0560	(10)	BOLT-LICENSE PLATE	EXPEDITION 97-98 (2)		\$.75

40-3740	(11)	BUMPER BRACKET-LH	EXPEDITION 97-98 (1)		\$8.95
40-3741	(12)	BUMPER BRACKET-RH	EXPEDITION 97-98 (1)		\$8.95

40-3756	(13)	BUMPER BRACE-OUTER-LH	4WD EXPEDITION 97-98 (1)		\$6.95
---------	------	-----------------------	--------------------------	--	--------

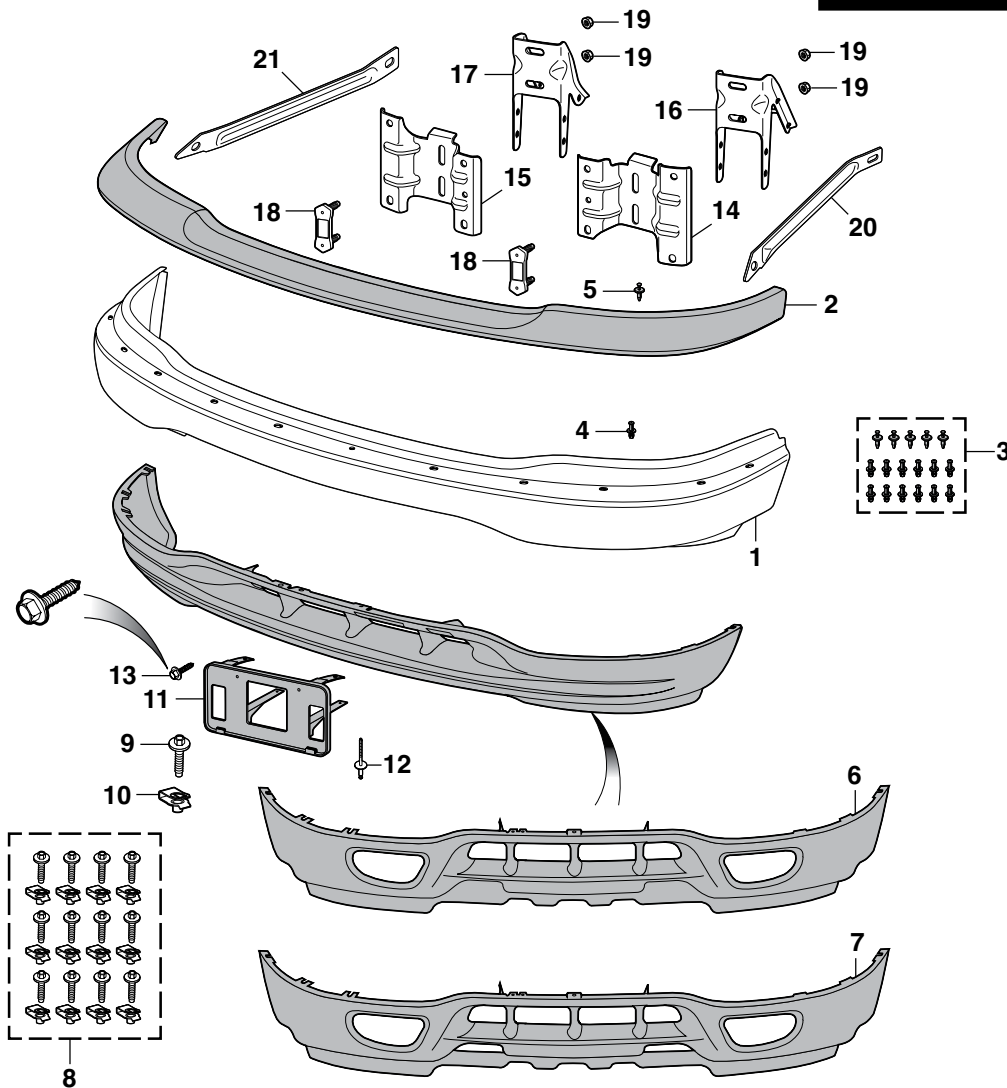
40-3757	(14)	BUMPER BRACE-OUTER-RH	4WD EXPEDITION 97-98 (1)		\$11.95
---------	------	-----------------------	--------------------------	--	---------

\* Or \*\* after the sell price means your order will incur an Oversize Part Charge for each oversized part. \* Means extra charge will be \$20. \*\* Means extra charge will be \$50. Due to packing and/or transportation requirements, please allow additional time for delivery. Oversized Parts are not available for air delivery.

## Front Bumper and Components

1999-02 Expedition

Left Hand (LH) & Right Hand (RH)  
Means as You Sit Facing Forward in the Vehicle



### Chrome Front Bumper

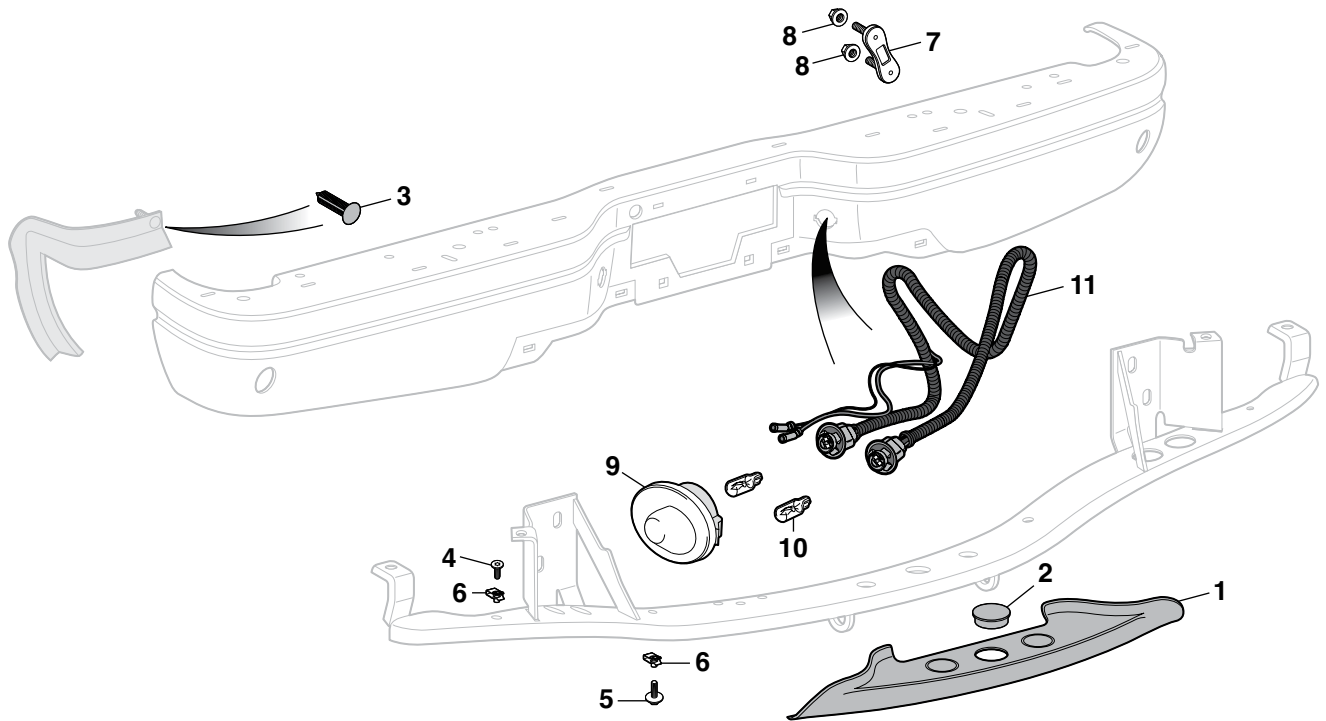
- Bumper used by Collision Damage Repair Shops.
- Bumper is made using a computer-controlled process assuring consistent thickness of nickel and chrome plating.
- Economically priced replacements for your rusty, dull, scratched and pitted bumper.
- Save money, order your replacement bumper today.

PART	ILL#	DESCRIPTION	APPLICATION	REQD	PRICE	PART	ILL#	DESCRIPTION	APPLICATION	REQD	PRICE
49-9528-T	(1)	CHROME BUMPER PRIMER BUMPER	EXPEDITION 99-02	(1)	\$199.95	40-1369	(12)	RIVET-BRACKET	EXPEDITION 99-02	(4)	\$1.25
49-9626-T			EXPEDITION 99-02	(1)	\$139.95	40-0560	(13)	BOLT-LICENSE PLATE	EXPEDITION 99-02	(2)	\$.75
40-3792	(2)	BUMPER PAD-BLACK PAINTABLE SMOOTH	EXPEDITION 99-02	(1)	\$19.95**	40-3742	(14)	BUMPER BRACKET-LH	EXPEDITION 99-02	(1)	\$9.95
40-3793		BUMPER PAD-BLACK TEXTURED	EXPEDITION 99-02	(1)	\$24.95**	40-3743	(15)	BUMPER BRACKET-RH	EXPEDITION 99-02	(1)	\$9.95
40-0148	(3)	BUMPER PAD HARDWARE KIT	EXPEDITION 99-02	(1)	\$16.95	40-3744	(16)	BRACKET TO FRAME-LH	EXPEDITION 99-02	(1)	\$14.95
40-1379	(4)	RETAINER	EXPEDITION 99-02	(12)	\$1.25	40-3745	(17)	BRACKET TO FRAME-RH	EXPEDITION 99-02	(1)	\$14.95
40-1392	(5)	RETAINING PIN	EXPEDITION 99-02	(5)	\$.85	40-3761	(18)	BUMPER PLATE STUD	EXPEDITION 99-02	(2)	\$11.95
49-9491	(6)	VALANCE-GRAY FOG LIGHTS	EXPEDITION 99-02	(1)	\$49.95**	40-0819	(19)	LOCK NUT-BUMPER TO FRAME	EXPEDITION 99-02	(4)	\$1.45
49-9492	(6)	VALANCE-BEIGE FOG LIGHTS	EXPEDITION 99-02	(1)	\$99.95**	40-3758	(20)	BUMPER BRACE-OUTER-LH	EXPEDITION 99-02	(1)	\$6.95
49-9494	(7)	VALANCE-BEIGE FOG LIGHTS & TOW HOOKS	EXPEDITION 99-02	(1)	\$49.95**	40-3759	(21)	BUMPER BRACE-OUTER-RH	EXPEDITION 99-02	(1)	\$6.95
40-0721	(8)	VALANCE HARDWARE KIT	EXPEDITION 99-02	(1)	\$9.95	* Or ** after the sell price means your order will incur an Oversize Part Charge for each oversized part. * Means extra charge will be \$20. ** Means extra charge will be \$50. Due to packing and/or transportation requirements, please allow additional time for delivery. Oversized Parts are not available for air delivery.					
50-0235	(9)	BOLT W/WASHER	EXPEDITION 99-02	(12)	\$.75	-T after a part number means that part must be shipped Truck Freight. An additional \$150.00 will be charged to your order for delivery in the 48 contiguous United States. Orders outside of the 48 states will be quoted. Additional delivery time required.					
40-0940	(10)	U-NUT	EXPEDITION 99-02	(12)	\$.95						
49-9592	(11)	LICENSE PLATE BRACKET	EXPEDITION 99-02	(1)	\$10.95						



**Rear Step Bumper Components**

1997-02 Expedition



PART	ILL#	DESCRIPTION	APPLICATION	REQD	PRICE
49-9806-BL	(1)	BUMPER PAD-LOWER-BLACK	EXPEDITION 97-02	(1)	\$19.95
40-3797	(2)	HITCH HOLE COVER-BLACK	EXPEDITION 97-02	(1)	\$6.95
30-0762-F	(3)	RETAINER-DEFLECTOR	EXPEDITION 97-02	(2)	\$ .65
40-0898	(4)	TORX HEAD SCREW	EXPEDITION 97-02	(4)	\$4.50
40-0187	(5)	BOLT-LOWER	EXPEDITION 97-02	(2)	\$6.95
29-0520-F	(6)	U-NUT	EXPEDITION 97-02	(6)	\$1.35

PART	ILL#	DESCRIPTION	APPLICATION	REQD	PRICE
40-0893	(7)	BUMPER RETAINER	EXPEDITION 97-02	(2)	\$3.95
40-0819	(8)	TORQUE LOCK NUT	EXPEDITION 97-02	(4)	\$1.45
50-8482	(9)	LICENSE LAMP LENS-CHROME	EXPEDITION 97-02	(2)	\$5.95
47-4247		LICENSE LAMP LENS-SILVER	EXPEDITION 97-02	(2)	\$6.95
50-8481		LICENSE LAMP LENS-BLACK	EXPEDITION 97-02	(2)	\$4.95
36-0224-F	(10)	BULB-CLEAR	EXPEDITION 97-02	(2)	\$1.25
47-4255	(11)	LICENSE PLATE LAMP HARNESS	EXPEDITION 97-02	(1)	\$9.45

**Paint Protection Film**

Made from rugged, clear, 8-mil thick polyurethane paint protection film that features a clear-coat finish for maximum shine and durability. Once applied, this material is virtually invisible yet helps prevent chipping, scratching and scuffing to the vulnerable areas of your vehicle.

**Rocker Panel Protection Film**

**38-9035-F**  
\$169.95

Kit contains two 9" wide x 15' rolls, installation squeegees and instructions.

**Hood Protection Film**

**38-0274-F**  
\$54.95

Kit contains 12" wide x 6' roll and installation instructions.

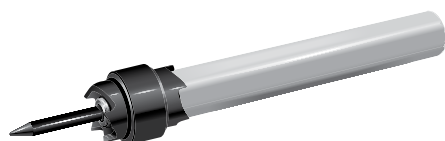
## Adhesive/Stripe Eraser Wheel



Easily remove decals, pinstriping and adhesive tape residue without damaging your paint! This 3-1/2" diameter eraser wheel includes the arbor and is designed for use in air or electric drills at speeds up to 4,000 rpm.

PART	DESCRIPTION	PRICE
38-1314-F	ADHESIVE/STRIPE ERASER WHEEL	\$12.95

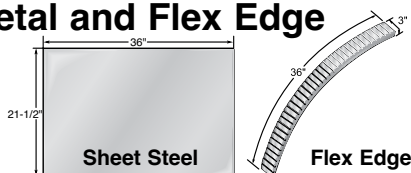
## Spot Weld Cutter



Quickly drills out spot welds on body panels. Features 1/4" arbor and double-ended 3/8" diameter cutting blade with retractable pilot to ensure accurate cuts without damage to underlying panel.

PART	DESCRIPTION	PRICE
38-1307-F	SPOT WELD CUTTER-3/8"	\$9.45
38-1396-F	REPL HEAD-3/8"-3 PACK	\$13.95

## Sheet Metal and Flex Edge

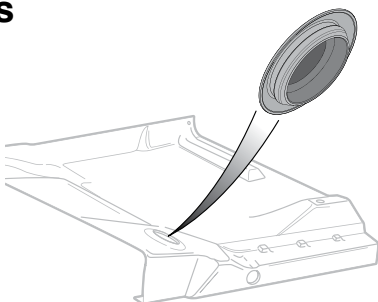


PART	DESCRIPTION	PRICE
38-7897-F	FLEX EDGE-3/4"X36"X3" 22GA	\$10.95
38-7772-F	STEEL-36"X43" 20GA	\$37.95*
38-7773-F	STEEL-36"X21-1/2" 20GA	\$20.95

\* Or \*\* after the sell price means your order will incur an Oversize Part Charge for each oversized part. \* Means extra charge will be \$20. \*\* Means extra charge will be \$50. Due to packing and/or transportation requirements, please allow additional time for delivery. Oversized Parts are not available for air delivery.

## Sheet Metal Plugs

These flush mount Sheet Metal Plugs close unused holes in firewalls, floor pans and doors. Plugs are made of plastic and easily snap into 14 to 26 gauge sheet metal. Available in multiple sizes to fit 3/8" to 1" diameter holes.



PART	DESCRIPTION	REQD	PRICE
30-1972-F	PLUG 3/8" HOLE	(AR)	\$.65
30-1966-F	PLUG 1/2" HOLE	(AR)	\$.65
30-1973-F	PLUG 5/8" HOLE	(AR)	\$.65
30-1974-F	PLUG 3/4" HOLE	(AR)	\$.65
30-1975-F	PLUG 7/8" HOLE	(AR)	\$.65
30-1954-F	PLUG 1" HOLE	(AR)	\$.65

## Plug Weld Pliers



Spot weld your new rockers or other body panels with ease and have a factory style weld to show for it. The Plug Weld Pliers feature locking jaws and a replaceable copper alloy pad to prevent burn through. Replacement pads sold below.

PART	DESCRIPTION	PRICE
38-1318-F	PLUG WELD PLIERS	\$37.95
38-1319-F	REPLACEMENT PAD	\$11.95

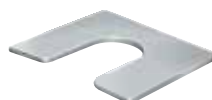
## Panel and Trim Removal Tool Set



Five-piece Panel and Trim Removal Tool Set can be used to remove interior and exterior trim, fasteners, moldings and panels. Constructed of heavy-duty plastic for strength and flexibility. Call or go online and order yours today!

PART	DESCRIPTION	REQD	PRICE
38-8245-F	PANEL & TRIM TOOL SET-5PC	(1)	\$9.95

## Body Panel Alignment Shims



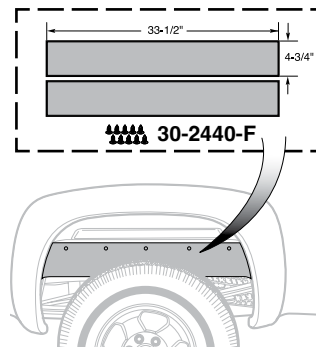
30-2826-F  
30-2827-F

30-2828-F  
30-2829-F

PART	DESCRIPTION	PRICE
30-2826-F	SHIM 1/16" THICK 3/8" SLOT	\$.95
30-2827-F	SHIM 1/8" THICK 3/8" SLOT	\$1.25
30-2828-F	SHIM 1/16" THICK 1/2" SLOT	\$1.35
30-2829-F	SHIM 1/8" THICK 1/2" SLOT	\$1.35

## Body Gap Filler Set

Body Gap Filler Set covers the gap between the frame and the bed of the truck. Body Gap Filler Set creates a clean backdrop for your wheels and is also used to cover the opening created by a body lift kit. Made from 3/16" thick industrial rubber, each piece measures 33-1/2" long by 4-3/4" wide and must be sized and cut to fit. Drilling is required for installation. Mounting hardware and installation instructions are included.



PART	DESCRIPTION	REQD	PRICE
30-2440-F	BODY GAP FILLER SET-REAR	(1)	\$17.95

**All Chrome 12 Bar Grille**

1999-02 Expedition



49-2568

PART	DESCRIPTION	APPLICATION	REQD	PRICE
49-2568	CHROME GRILLE ASSEMBLY 12 BAR	EXPEDITION 99-02 (1)		\$234.95



**YOUR TRUCK  
YOUR STORY**

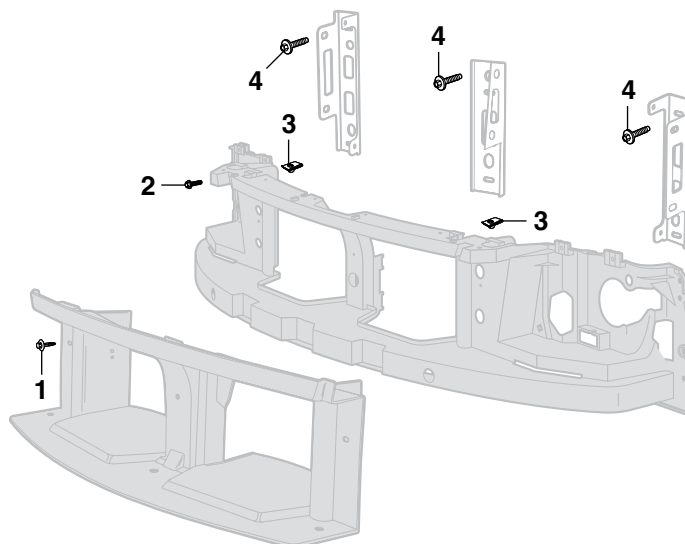
**SHARE YOUR  
TRUCK  
JOURNEY®**

[lmctrucklife.com](http://lmctrucklife.com)



## Grille Components

2003-06 Expedition



PART	ILL#	DESCRIPTION	APPLICATION	REQD	PRICE
40-1618	(1)	RETAINER-BAFFLE	EXPEDITION 03-06	(6)	\$ .75
55-0423-F	(2)	BOLT-PANEL	EXPEDITION 03-06	(4)	\$ .95
29-0515-F	(3)	U-NUT-PANEL	EXPEDITION 03-06	(2)	\$1.35
50-0235	(4)	BOLT-BRACKET	EXPEDITION 03-06	(12)	\$ .75

## Grille Emblems

1997-06 Expedition



50-7194

Ford Official Licensed Product is purchased from an authorized Ford Licensee.

PART	DESCRIPTION	APPLICATION	REQD	PRICE
50-7194	EMBLEM "FORD"	EXPEDITION 97-98	(1)	\$30.95
42-3493	EMBLEM "FORD"	EXPEDITION 99-06	(1)	\$39.95

## Decals



42-0038



42-0005



42-0004



42-0000



42-0175

Ford Official Licensed Product is purchased from an authorized Ford Licensee.

PART	DESCRIPTION	APPLICATION	REQD	PRICE	PART	DESCRIPTION	APPLICATION	REQD	PRICE
42-0038	DECAL-CAUTION FAN	97-02	(1)	\$8.45	42-0000	DECAL-FORD OVAL BLUE	W/WHITE SCRIPT 3-1/2"	(1)	\$8.95
42-0005	DECAL-FORD DRAG TEAM	5"	(1)	\$9.95	42-0001	DECAL-FORD OVAL BLUE	W/WHITE SCRIPT 6-1/2"	(1)	\$8.95
42-0006	DECAL-FORD DRAG TEAM	8"	(1)	\$8.95	42-0002	DECAL-FORD OVAL BLUE	W/WHITE SCRIPT 9-1/2"	(1)	\$9.45
42-0004	DECAL-FORD GENUINE PARTS	3"	(1)	\$8.45	42-0003	DECAL-FORD OVAL BLUE	W/WHITE SCRIPT 17"	(1)	\$10.95
					42-0175	DECAL-"POWER BY FORD"	BLUE 7-3/4" X 2"	(1)	\$8.95

## Gift Cards Now Available

Call (800) 562-8782

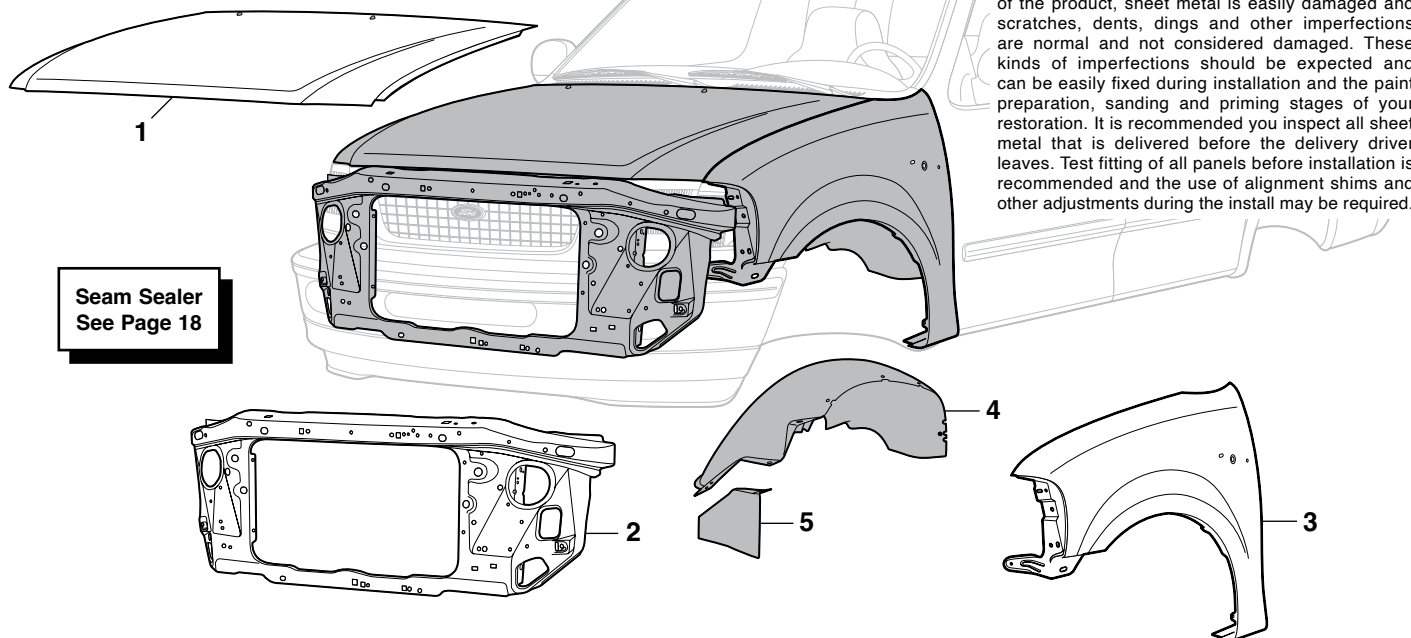
Available in \$25 - \$50 - \$100

- Gift Cards are the perfect gift to ensure you are giving exactly what they want!
- Gift Cards don't expire.
- Orders must be pre-paid. Orders received before 3:00 p.m. Central Time will ship same day.
- Gift Cards can now be redeemed through the mail or by phone.



## Front Steel Body Parts

1997-02 Expedition



### Steel Body Panels and What to Expect

All sheet metal is inspected before it is shipped and careful steps are taken to package parts so there is no damage during shipping. Due to the nature of the product, sheet metal is easily damaged and scratches, dents, dings and other imperfections are normal and not considered damaged. These kinds of imperfections should be expected and can be easily fixed during installation and the paint preparation, sanding and priming stages of your restoration. It is recommended you inspect all sheet metal that is delivered before the delivery driver leaves. Test fitting of all panels before installation is recommended and the use of alignment shims and other adjustments during the install may be required.

**Left Hand (LH) & Right Hand (RH)**  
Means as You Sit Facing Forward in the Vehicle

PART	ILL#	DESCRIPTION	APPLICATION	REQD	PRICE
49-9973-T	(1)	HOOD-STEEL	EXPEDITION 97-02	(1)	\$174.95
43-2866-T	(2)	RADIATOR SUPPORT	"A" EXPEDITION 97-02	(1)	\$159.95
49-8652-T	(3)	FRONT FENDER-LH	"B" EXPEDITION 97-02	(1)	\$99.95
49-8653-T		FRONT FENDER-RH	"B"C" EXPEDITION 97-02	(1)	\$99.95
49-8654-T		FRONT FENDER-LH	"D" EXPEDITION 97-02	(1)	\$99.95
49-8655-T		FRONT FENDER-RH	"C"D" EXPEDITION 97-02	(1)	\$99.95
49-8666	(4)	INR FENDER LINER-UPPER-LH	EXPEDITION 97-02	(1)	\$16.95*
49-8667		INR FENDER LINER-UPPER-RH	EXPEDITION 97-02	(1)	\$16.95*

PART	ILL#	DESCRIPTION	APPLICATION	REQD	PRICE
49-8670	(5)	INR FENDER LINER-LWR-LH 4WD	EXPEDITION 97-02	(1)	\$4.95
49-8671		INR FENDER LINER-LWR-RH 4WD	EXPEDITION 97-02	(1)	\$4.95

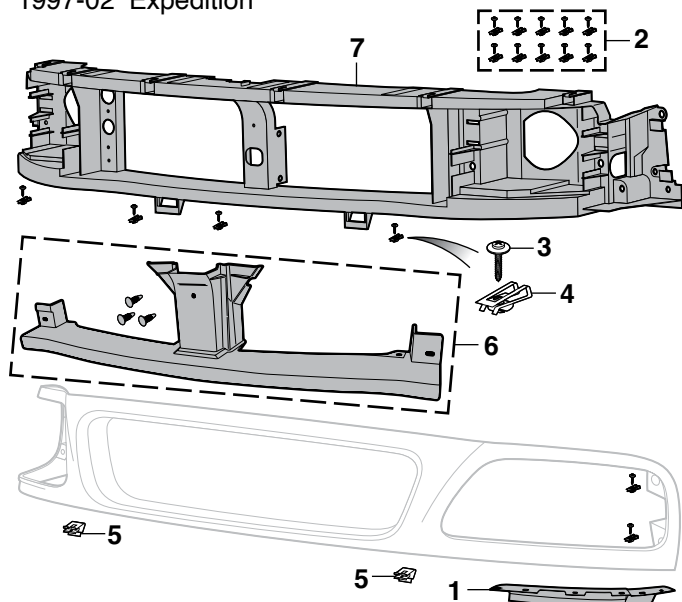
Note: "A" Without holes to mount crash sensors.  
 "B" Without holes for Wheel Opening Molding.  
 "C" With antenna hole.  
 "D" With holes for Wheel Opening Molding.

-T after a part number means that part must be shipped Truck Freight. An additional \$150.00 will be charged to your order for delivery in the 48 contiguous United States. Orders outside of the 48 states will be quoted. Additional delivery time required.

\* Or \*\* after the sell price means your order will incur an Oversize Part Charge for each oversized part. \* Means extra charge will be \$20. \*\* Means extra charge will be \$50. Due to packing and/or transportation requirements, please allow additional time for delivery. Oversized Parts are not available for air delivery.

## Grille Components

1997-02 Expedition



PART	ILL#	DESCRIPTION	APPLICATION	REQD	PRICE
49-9476	(1)	GRILLE TO BUMPER FILLER-LH	"A" 97-02	(1)	\$7.95
49-9477		GRILLE TO BUMPER FILLER-RH	"A" 97-02	(1)	\$7.95
40-0168	(2)	GRILLE HARDWARE KIT 20PC	EXPEDITION 97-02	(1)	\$27.95
50-0307	(3)	SCREW-GRILLE	EXPEDITION 97-02	(10)	\$1.95
40-0536	(4)	U-NUT-GRILLE	EXPEDITION 97-02	(10)	\$1.25
40-0538	(5)	CLIP-GRILLE	EXPEDITION 97-02	(2)	\$1.45
49-2517	(6)	GRILLE BAFFLE	EXPEDITION 97-02	(1)	\$24.45
49-2524	(7)	GRILLE REINFORCEMENT PANEL	EXPEDITION 97-02	(1)	\$32.95**

Note: "A" Drilling required for 1997-98 models.

\* Or \*\* after the sell price means your order will incur an Oversize Part Charge for each oversized part. \* Means extra charge will be \$20. \*\* Means extra charge will be \$50. Due to packing and/or transportation requirements, please allow additional time for delivery. Oversized Parts are not available for air delivery.

## ABS Hood Insulation Kits



Heat-resistant textured ABS Hood Insulation Kit covers up the underside of your hood. Each kit includes pre-cut foil-backed insulation material, 14 oz. spray adhesive, 1 roll of aluminum tape, center punch, drill sleeve, mounting hardware and illustrated instructions. Drilling may be required on models not originally equipped with hood insulation.

### ABS Hood Insulation Kits Do Not Fit Cowl Induction Hoods

PART	DESCRIPTION	APPLICATION	REQD	PRICE
49-5274	ABS HOOD INSULATION KIT-PLAIN	EXPEDITION 97-02 (1)		\$199.95



## Cowl Induction Steel Hoods ... Give Your Truck a High Performance Look

Cowl Induction Steel Hood helps cool the engine for increased airflow and increased performance. The outside cold fresh air carries a denser air/fuel mixture to an engine's combustion chambers than the warm underhood air. Hoods are made from primed high-quality steel with full inner frame that reuses original factory latch and hinges for an easy bolt-on application and must be painted.

49-9971-T



49-9972-T



49-9988-T



PART	DESCRIPTION	APPLICATION	REQD	PRICE
49-9971-T	COWL HOOD	2" RISE EXPEDITION 97-02 (1)		\$599.95
49-9972-T	COWL HOOD-COBRA STYLE	2" RISE EXPEDITION 97-02 (1)		\$589.95
49-9988-T	HOOD-RAM AIR LOOK	"A" NO RISE EXPEDITION 97-02 (1)		\$349.95

Note: "A" Hood includes a pair of gas struts.

-T after a part number means that part must be shipped Truck Freight. An additional \$150.00 will be charged to your order for delivery in the 48 contiguous United States. Orders outside of the 48 states will be quoted. Additional delivery time required.

## Cowl Induction Emblem Set



Emblems attach with push nuts and adhesive tape, included. Holes will need to be drilled for installation.

PART	DESCRIPTION	APPLICATION	REQD	PRICE
38-3698-F	EMBLEM SET "COWL INDUCTION"	4PC	(1)	\$15.95





## POR-15 Restoration Products



**POR-15** is a high-performance rust preventative black paint designed to extend the life of new and rusted metal surfaces. It dries to a rock-hard, non-porous finish that will not rust, chip, crack or peel.

Dries in 2 to 5 hours; body fillers and paint can be applied over POR-15. For maximum effectiveness, degrease metal surfaces with Cleaner Degreaser, then prime with Metal-Prep.

**Approximate product coverage:**

1 pint = 48 sq. ft.; 1 quart = 96 sq. ft.



**Dry Time Accelerator** reduces the cure time of POR-15 by 30-50% without affecting the final physical properties of the paint. One 8 ounce bottle treats 64 pints or 32 quarts of POR-15.

PART	DESCRIPTION	PRICE
37-8411-F	POR-15 SEMI-GLOSS-1 PINT	\$43.95
37-8412-F	POR-15 SEMI-GLOSS-1 QUART	\$66.95
37-8408-F	POR-15 GLOSS-1 PINT	\$41.88
37-8409-F	POR-15 GLOSS-1 QUART	\$63.89
37-8418-F	DRY TIME ACCELERATOR	\$34.05



**High Temp Paint** is an extreme temperature finish that maintains color without burning off or discoloring on manifolds and headers. Withstands high temperatures up to 1,200°F and resists cracking, chipping and peeling. It is weather-, salt- and moisture-resistant. Available in gray or aluminum color; can be brushed or sprayed on. Recommend sandblasting for optimal surface preparation.

**Approximate coverage:** 8 oz. covers a set of big block V8 headers with two coats.

PART	DESCRIPTION	PRICE
37-8484-F	HIGH TEMP PAINT-GRAY 8 OZ	\$25.51
37-8485-F	HIGH TEMP PAINT-ALUM 8 OZ	\$25.51



**Metal-Prep** provides adhesion for POR-15 on any metal surface. Gently etches metal, neutralizes rust and creates an ideal anchor for coatings such as POR-15, while leaving a zinc phosphate finish to ensure chemical bonding of paint and steel. Metal-Prep must be used on galvanized metal, aluminum, stainless steel and smooth, polished or new metal surfaces prior to applying POR-15. Metal-Prep is water-based so it is not caustic, corrosive, toxic or flammable.

PART	DESCRIPTION	PRICE
37-8415-F	METAL-PREP 1 QUART	\$22.14
37-8416-F	METAL-PREP 1 GALLON	\$44.74



**Cleaner Degreaser** cleans and degreases in one application without messy residues, noxious fumes or flammable solvents. Removes grease, oil, mildew, algae, musty odors, soap films and wax from canvas, vinyl, plastics, nylon, wood, fiberglass and all metal surfaces.

Cleaner Degreaser should be used as a surface prep prior to using Metal-Prep and POR-15.

PART	DESCRIPTION	PRICE
37-8413-F	CLEANER DEGREASER 1 QUART	\$14.67
37-8414-F	CLEANER DEGREASER 1 GALLON	\$29.95



**POR-15 Self Etch Primer** is a quick drying and easy-to-apply coating which enables a restorer to quickly topcoat POR-15 Rust Preventive Coating and other basecoats. You can even topcoat POR-15 that's been in place for months or years. This Self Etch Primer is NOT a high-build primer, it can be sprayed on almost any painted surface and can be top coated in 15 - 30 minutes. It bonds incredibly well to POR-15 Rust Preventive Coating, and all topcoats bond incredibly well to POR-15 Self Etch Primer. It can be sanded lightly, and, if desired, multiple coats may be applied.

PART	DESCRIPTION	PRICE
37-8401-F	SELF ETCH PRIMER-GRAY	\$39.15



37-8402-F



37-8403-F



37-8404-F

PART	DESCRIPTION	PRICE
37-8402-F	TOP COAT-CLEAR	\$28.39
37-8403-F	TOP COAT-GLOSS BLACK	\$28.39
37-8404-F	TOP COAT-CHASSIS BLACK	\$28.39

**POR-15 Top Coat** can be applied directly to a clean prepped metal surface, but when used as a top coat over POR-15 Rust Preventive Coating it provides the toughest, most permanent protection against rust and corrosion. It has exceptional long-term gloss and color retention when exposed to sunlight and the elements, non-porous, extremely scratch and chip resistant, won't crack, peel or chip. Can be applied directly to metal substrates, with no need for a primer or undercoat, and is formulated to form a robust barrier that sheds moisture.

**Chassis Black** has a semi-gloss appearance. For maximum durability Chassis Black should be clear coated.



**Bed Liner** is a water-based, rubberized coating ideal for protecting truck beds, and all other metal, aluminum, fiberglass and wood surfaces exposed to impacts and scuffs. It is UV stable and offers superior adhesion, impact resistance and flexibility. Features a textured semi-gloss black finish for good looks. Prior to application, surfaces should be degreased with Cleaner Degreaser and metal surfaces should be treated with Metal-Prep. Bed Liner can be applied over POR-15.

**Approximate product coverage:**

1 quart = 25-30 sq. ft.; 1 gallon = 100-120 sq. ft.

PART	DESCRIPTION	PRICE
37-8480-F	BED LINER 1 QUART	\$37.94
37-8481-F	BED LINER 1 GALLON	\$142.96



**Fuel Tank Sealer** coats the inside of your tank to stop rust and seal pinholes and weld seams. It's a non-porous, flexible film that is resistant to all fuels, alcohols and fuel additives. This environmentally safe sealer does not contain the harmful chemical Methyl Ethyl Ketone (MEK) and is non-flammable. Cleaner Degreaser and Metal-Prep must be used to prep fuel tank prior to using fuel tank sealer.

**Approximate product coverage:**

1 pint = to 12.5 gal tank; 1 quart = to 25 gal tank

PART	DESCRIPTION	PRICE
37-8488-F	FUEL TANK SEALER 1 PINT	\$31.44
37-8489-F	FUEL TANK SEALER 1 QUART	\$54.60



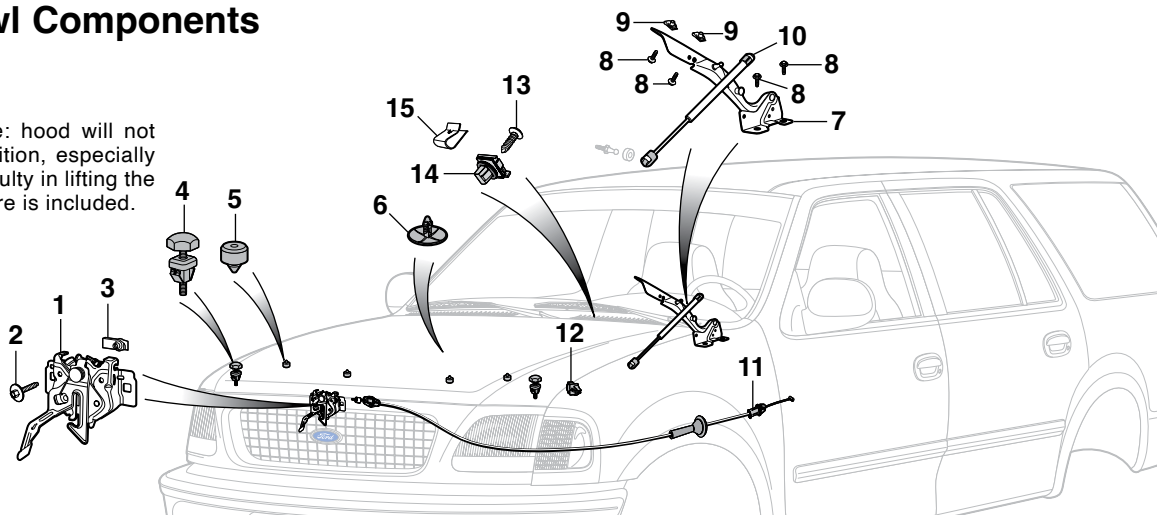
**POR-15 Stop Rust Kit** is designed to stop and/or prevent rust on metal surfaces and ensures the best results when applying POR-15 Rust Preventive Coating. The kit contains everything you need for the 3-step process, 8 ounce bottle of POR-15 Cleaner Degreaser, 8 ounce bottle of POR-15 Metal-Prep, 4 ounce can of POR-15 Gloss Black, two paint brushes, 1 pair of latex gloves, and detailed instructions and tips. The kit is ideal for small projects such as sub-frames, axle replacements, control arms, brake shields and much more! There is enough material in this kit to cover a 6 sq. ft. area with two coats.

PART	DESCRIPTION	PRICE
37-8405-F	STOP RUST KIT	\$27.84

## Hood and Cowl Components

1997-06 Expedition

Signs of strut failure are: hood will not stay in the full open position, especially in cold weather, and difficulty in lifting the hood. Necessary hardware is included.



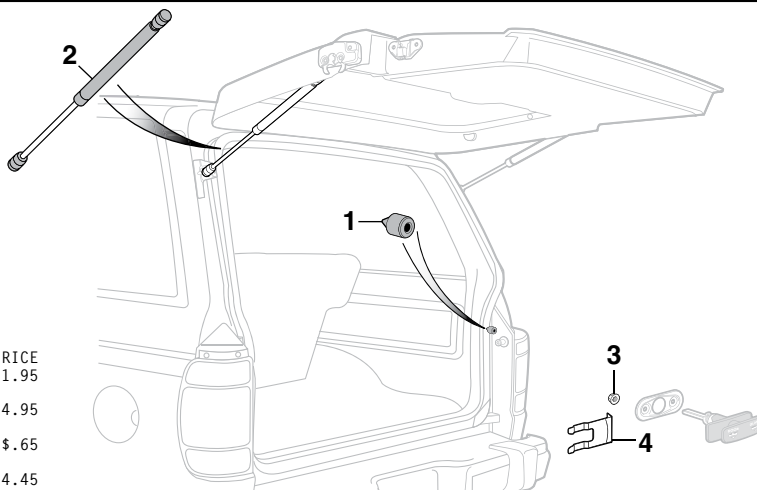
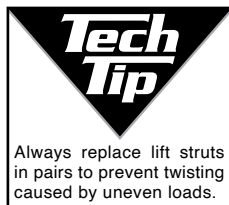
PART	ILL#	DESCRIPTION	APPLICATION	REQD	PRICE
40-3866	(1)	HOOD LATCH	EXPEDITION 97-02	(1)	\$15.95
50-0235	(2)	BOLT-LATCH	EXPEDITION 97-06	(2)	\$.75
40-0914	(3)	U-NUT-LATCH	EXPEDITION 97-06	(2)	\$.95
41-1626	(4)	HOOD BUMPER-RAD SUPPORT	EXPEDITION 97-06	(2)	\$5.45
41-1630	(5)	HOOD BUMPER-HOOD	EXPEDITION 97-02	(4)	\$4.95
41-1638		HOOD BUMPER-HOOD	EXPEDITION 03-06	(2)	\$4.95
40-1399	(6)	RETAINER-HOOD INSULATION	EXPEDITION 97-06	(AR)	\$.75
40-3888	(7)	HOOD HINGE-LH	EXPEDITION 97-06	(1)	\$12.95
40-3889		HOOD HINGE-RH	EXPEDITION 97-06	(1)	\$12.95
40-0277	(8)	BOLT-HINGE	EXPEDITION 97-06	(8)	\$1.25
40-0888	(9)	U-NUT-HINGE	EXPEDITION 97-06	(4)	\$.95

PART	ILL#	DESCRIPTION	APPLICATION	REQD	PRICE
40-3893	(10)	HOOD LIFT STRUT	EXPEDITION 97-02	(2)	\$11.95
40-3828	(11)	HOOD RELEASE CABLE	EXPEDITION 97-02	(1)	\$44.95
50-0509	(12)	RETAINER-CABLE	EXPEDITION 97-02	(2)	\$.85
30-0531-F	(13)	SCREW-COWL	EXPEDITION 97-03	(9)	\$.75
40-1356	(14)	RETAINER-COWL	EXPEDITION 97-03	(9)	\$1.95
40-1456	(15)	CLIP-COWL	EXPEDITION 97-03	(5)	\$.75

## Liftgate Components

1997-02 Expedition

Signs of strut failure are: liftgate will not stay in the full open position, especially in cold weather, and difficulty in lifting the liftgate. Necessary hardware is included.



PART	ILL#	DESCRIPTION	APPLICATION	REQD	PRICE
41-1569	(1)	BUMPER-LIFTGATE	EXPEDITION 97-02	(2)	\$1.95
40-3895	(2)	LIFTGATE STRUT	EXPEDITION 97-02	(2)	\$14.95
31-0876-F	(3)	NUT-HANDLE	EXPEDITION 97-02	(2)	\$.65
50-7776	(4)	LIFTGATE LOCK RETAINER	EXPEDITION 97-02	(1)	\$4.45

## Underhood Lamp

Underhood Lamp adapts to any 12 volt truck and helps illuminate the engine bay. No need for wiring into a switch, bulb socket base is gravity activated; lamp comes on when hood is raised and goes out when hood is lowered. Mount underneath hood and connect lamp wire to any constant 12 volt source. Moisture proof in-line fuse is integrated into the wire for protection.



42-5503



PART	DESCRIPTION	APPLICATION	REQD	PRICE
42-5503	UNDERHOOD LAMP	12 VOLT	(1)	\$57.95
36-0225-F	REPLACEMENT BULB CLEAR	FOR 42-5503	(1)	\$1.45
30-0574-F	INSTALLATION SCREW	FOR 42-5503	(2)	\$.65

Installation Tip: Since all hoods and mounting locations are different, a slight adjustment to mounting bracket may be needed to assure light goes out when hood is closed. After mounting bracket and wires have been installed, apply pressure to the mounting bracket to change the angle as needed for proper operation.

## Chrome Outside Door Handle Set

1997-02 Expedition



49-7580



49-7581

PART	DESCRIPTION	APPLICATION	REQD	PRICE
49-7580	CHROME DOOR HANDLE SET-FRONT "A"	EXPEDITION 97-02 (1)	(1)	\$49.95
49-7581	CHROME DOOR HANDLE SET-FRONT "B"	EXPEDITION 97-02 (1)	(1)	\$49.95
49-7598	CHROME DOOR HANDLE SET-REAR	EXPEDITION 97-02 (1)	(1)	\$49.95

Note: "A" For models without keypad entry.  
"B" For models with keypad entry. Keypad not included.

## 7-Piece Plastic Pry Bar Set



These pry bars can be used for scraping, removing fasteners, and of course "prying." With many different configurations, the possibilities are unlimited. The plastic design prevents scratching or marring of sensitive surfaces. All the pry bars are 7" overall length.

PART	DESCRIPTION	REQD	PRICE
38-8247-F	PLASTIC PRY BAR SET-7PC	(1)	\$10.95

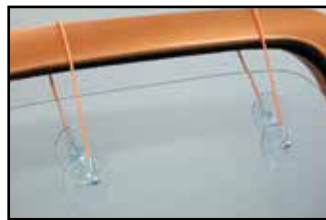
## Belt Molding Remover



Window Belt Molding Remover allows quick removal of your window belt molding without damaging the sheet metal, glass or molding. Plasti-dipped handle provides a wide, comfortable grip.

PART	DESCRIPTION	PRICE
42-1395	BELT MOLDING REMOVER	\$14.55

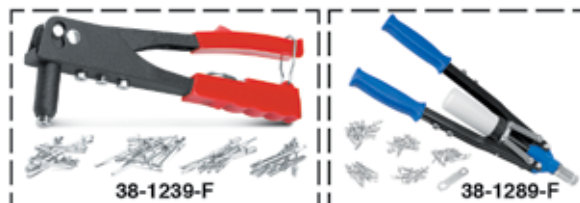
## Door Window Glass Holder



Door Window Glass Holder supports the glass while you work on the window regulator. It works on all trucks with a top door frame. Simply loop cable over door frame and attach suction cups to each side of glass. The glass is then securely held above the door while your work is performed.

PART	DESCRIPTION	PRICE
49-6397	DOOR WINDOW GLASS HOLDER	\$18.45

## Hand Riveter Set ... Makes Rivet Installation Easy

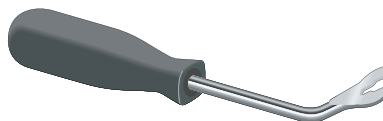


The Hand Riveter Set works great for body clips, door components, ID plates and sheet metal repairs. Comes with four nosepieces (3/32", 1/8", 5/32" and 3/16") and a wrench inside the gun's handle. 60 blind rivets included.

The Heavy-Duty Hand Riveter Set features extra long handles to give you more leverage setting rivets. A collection bottle keeps the workplace safe and clean. Includes 3/32", 1/8", 5/32", 3/16" nosepieces, plus 1/4" for larger projects like installing brackets and window regulators. Comes with a wrench and 50 blind rivets.

PART	DESCRIPTION	PRICE
38-1239-F	HAND RIVETER SET	\$13.95
38-1289-F	HAND RIVETER SET-HD	\$19.95

## Fastener Removal Tool



This tool effectively removes the plastic fasteners found on most door panels. Working end is offset for ease of access.

PART	DESCRIPTION	PRICE
38-1238-F	FASTENER REMOVAL TOOL	\$4.99

## Outside Door Handles

1997-02 Expedition



49-7562



49-7574



49-7588



49-7563

Smooth Door Handles can be painted to match the color of your truck.

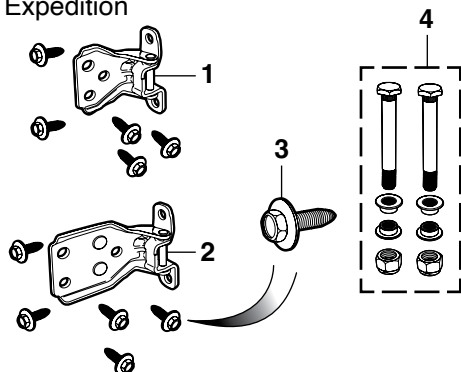
PART	DESCRIPTION	APPLICATION	REQD	PRICE
49-7562	FRONT DOOR HANDLE-LH	SMOOTH "A"	97-02 (1)	\$9.95
49-7563	FRONT DOOR HANDLE-RH	SMOOTH "A"	97-02 (1)	\$19.95
49-7588	FRONT DOOR HANDLE-LH	SMOOTH "B"	97-02 (1)	\$9.95
49-7589	FRONT DOOR HANDLE-RH	SMOOTH "B"	97-02 (1)	\$12.95
49-7586	FRONT DOOR HANDLE-LH	TEXTURED "B"	97-02 (1)	\$10.95
49-7587	FRONT DOOR HANDLE-RH	TEXTURED "B"	97-02 (1)	\$10.95
49-7574	REAR DOOR HANDLE-LH	SMOOTH EXPEDITION	97-02 (1)	\$14.95
49-7563	REAR DOOR HANDLE-RH	SMOOTH EXPEDITION	97-02 (1)	\$19.95

Note: "A" For models with keypad entry. Keypad not included.  
"B" For models without keypad entry.



## Front Door Hinge

1997-06 Expedition



PART	ILL#	DESCRIPTION	APPLICATION	REQD	PRICE
49-7274	(1)	FRONT DOOR HINGE UPPER-LH	EXPEDITION 97-06	(1)	\$35.45
49-7275		FRONT DOOR HINGE UPPER-RH	EXPEDITION 97-06	(1)	\$35.95
49-7276	(2)	FRONT DOOR HINGE LOWER-LH	EXPEDITION 97-06	(1)	\$36.95
49-7277		FRONT DOOR HINGE LOWER-RH	EXPEDITION 97-06	(1)	\$37.95
29-0200-F	(3)	BOLT-FRONT DOOR HINGE	EXPEDITION 97-06	(20)	\$1.25
49-7407	(4)	FRONT DOOR HINGE PIN KIT	EXPEDITION 97-06	(2)	\$12.95

## Reproduction Door Mirror without Turn Signal Light

1997-02 Expedition



49-6660



49-6662

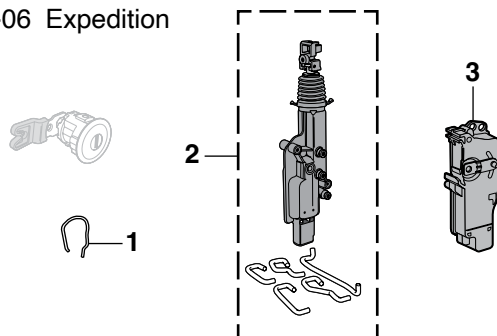
PART	DESCRIPTION	APPLICATION	REQD	PRICE
<b>Door Mirrors with Smooth Black Cap (Paint to Match)</b>				
49-6660	DOOR MIRROR-LH	EXPEDITION 97-02	(1)	\$37.95
49-6661	DOOR MIRROR-RH	EXPEDITION 97-02	(1)	\$37.95

### Door Mirrors with Chrome Cap

49-6662	DOOR MIRROR-LH	EXPEDITION 97-02	(1)	\$44.95
49-6663	DOOR MIRROR-RH	EXPEDITION 97-02	(1)	\$44.95

## Door Locks and Actuators

1997-06 Expedition



PART	ILL#	DESCRIPTION	APPLICATION	REQD	PRICE
40-1378	(1)	LOCK RETAINER	EXPEDITION 97-02	(2)	\$38.95
47-0934	(2)	DOOR LOCK ACTUATOR-FRONT	EXPEDITION 97-02	(2)	\$34.95
50-7802	(3)	DOOR LOCK ACTUATOR-LH	EXPEDITION 03-06	(2)	\$19.95
50-7803		DOOR LOCK ACTUATOR-RH	EXPEDITION 03-06	(2)	\$19.95

## Blind Spot Mirror

Blind spot mirrors increase viewing angle, eliminating blind spots. The 2" Adjustable Blind Spot Mirror rotates 360° for a customized wide angle view. Mirrors attach to door mirror with included self-adhesive tape.



PART	DESCRIPTION	REQD	PRICE
38-5890-F	BLIND SPOT MIRROR-2"	(AR)	\$1.95
38-5893-F	BLIND SPOT MIRROR-ADJUSTABLE-2"	(AR)	\$2.25
38-5892-F	BLIND SPOT MIRROR-3"	(AR)	\$1.95

## Chrome Door Mirror Cover Set

Chrome Mirror Covers are made from automotive grade ABS plastic finished with a high-quality chrome finish. Designed to withstand harsh conditions, they install securely with preapplied 3M™ tape. Mirror covers require no drilling or cutting and install in seconds!

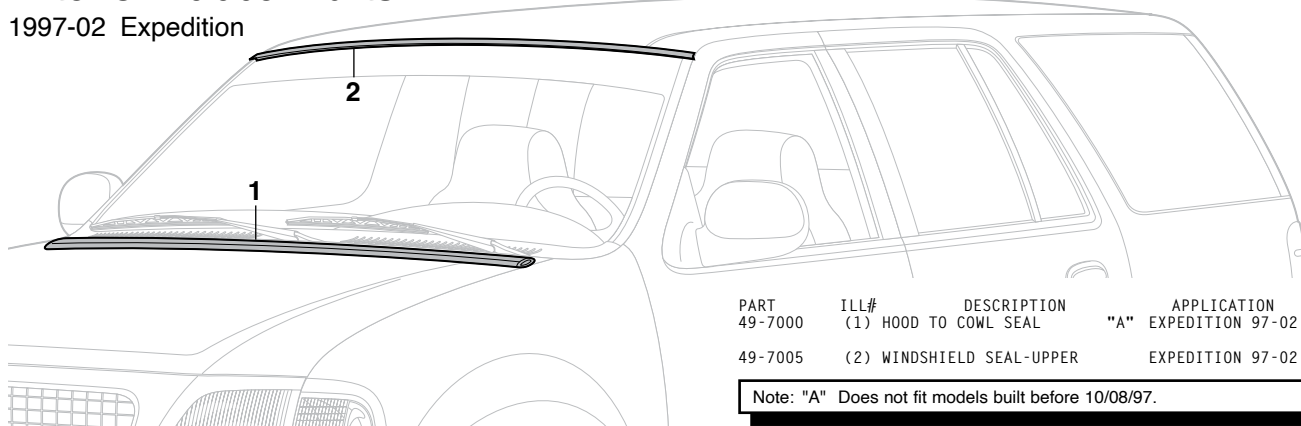


PART	DESCRIPTION	APPLICATION	REQD	PRICE
42-1041	DOOR MIRROR COVER SET-CHROME "A"	EXPEDITION 97-02	(1)	\$34.95

Note: "A" For models without turn signal indicators mounted on mirror housing.

## Exterior Rubber Parts

1997-02 Expedition



PART	ILL#	DESCRIPTION	APPLICATION	REQD	PRICE
49-7000	(1)	HOOD TO COWL SEAL	"A" EXPEDITION 97-02	(1)	\$8.95
49-7005	(2)	WINDSHIELD SEAL-UPPER	EXPEDITION 97-02	(1)	\$8.95

Note: "A" Does not fit models built before 10/08/97.



**Loctite Ready Gasket** makes leak-proof gaskets for temperatures from -75°F to 450°F. Blowout resistant, sensor-safe and ideal for sealing differential covers, valve covers, water pumps, thermostat housings and more. Applies with a standard caulking gun, dries black.

PART	DESCRIPTION	PRICE
38-0767-F	5 OZ TUBE	\$15.95



**Loctite RTV Red** is a high-temperature silicone gasket maker and adhesive. It forms a tough, flexible seal that is resistant to most chemicals without hardening, shrinking or cracking. RTV Red has a temperature range of -75°F to +600°F and is sensor-safe.

PART	DESCRIPTION	PRICE
42-0854	2.7 OZ TUBE	\$6.95



**Loctite Spray Adhesive** dries clear with superior bonding strength. Excels at attaching upholstery cloth, carpeting, insulation and has many other uses. Not recommended for use on headliners.

PART	DESCRIPTION	PRICE
38-0798-F	10.5 OZ CAN	\$9.45



**Loctite Rubberized Undercoating** is a heavy-duty undercoating that seals, protects and insulates frames, floor pans, wheel wells and other body panels. Rubberized for maximum durability.

PART	DESCRIPTION	PRICE
38-0766-F	16 OZ AEROSOL	\$6.95



**Permatex Weatherstrip Adhesive** is a flexible, water-resistant black adhesive for bonding rubber and metal surfaces. Withstands extreme temperatures and resistant to gasoline, antifreeze and most solvents.

PART	DESCRIPTION	PRICE
42-0759	5 OZ TUBE	\$8.75



**Permatex Anti-Seize Lubricant** is a highly refined blend of aluminum, copper and graphite lubricants. Use during assembly to prevent galling, corrosion and seizing due to weathering or chemicals. Anti-Seize Lubricant assures easier disassembly and is salt, corrosion and moisture resistant.

PART	DESCRIPTION	PRICE
42-0737	4 OZ JAR	\$7.75



**Loctite Copper Anti-Seize Stick** protects against high-temp seizing and galling of fasteners up to 1,800°F. Perfect for spark plugs, exhaust manifold bolts, thermostat housing bolts and oxygen sensors.

PART	DESCRIPTION	PRICE
38-0765-F	20 GRAM STICK	\$6.45



**Permatex Weatherstrip Adhesive** is a flexible, water-resistant black adhesive for bonding rubber and metal surfaces. Withstands extreme temperatures and resistant to gasoline, antifreeze and most solvents.

PART	DESCRIPTION	PRICE
42-0759	5 OZ TUBE	\$8.75



**Permatex Orange Threadlocker** is a hybrid formula that combines the strength of Red with the removability of Blue Threadlocker. Orange Threadlocker is ideal for heavy-duty, high vibration applications and can be removed with hand tools without heating.

PART	DESCRIPTION	PRICE
42-0749	.34 OZ TUBE	\$14.95



**Loctite Dielectric Grease** extends the life of electrical components by protecting them from moisture, salt and corrosion. Also prevents spark plugs from fusing to boots. Use on fuses, battery terminals, ignition components and other electrical connections.

PART	DESCRIPTION	PRICE
38-0770-F	.33 OZ TUBE	\$4.45



**Permatex Windshield and Glass Sealant** is a silicone sealant for windshields, windows and other glass. Flows into leaks like water and dries to form a flexible, tough, clear seal that is resistant to extreme temperatures, vibration and most chemicals.

PART	DESCRIPTION	PRICE
38-0783-F	1.5 OZ TUBE	\$5.95



**Permatex's Thread Sealant** with PTFE (a thermoplastic polymer) is an economical general-purpose fitting sealant. It outperforms traditional tapes and pipe dopes while it seals and resists pressure in air, oil, diesel fuel and hydraulic systems. Thread Sealant remains pliable at higher and lower temperatures.

PART	DESCRIPTION	PRICE
42-0733	4 OZ JAR	\$7.95



**Vinyl Edge Sealer Pen** is an ultraviolet light-blocking, fast-drying, clear acrylic sealer that protects the edges of vinyl decals, graphics and the ends of adhesive chrome body moldings. It features a wedge applicator tip for a smooth, even application.

PART	DESCRIPTION	PRICE
38-0921-F	.3 OZ PEN	\$12.95



**3M™ Adhesive Tape** is a high-performance, double-sided tape for all types of accessories, both interior and exterior. The tape's foam core allows it to expand and contract with temperature changes and to conform to surface irregularities and gaps. Includes three 1" x 12" strips.

PART	DESCRIPTION	PRICE
38-0788-F	3M TAPE	\$8.95



**Strip Caulk** is a non-hardening, non-shrinking waterproof black caulking material with great adhesion properties and is temperature resistant from -400°F to +500°F. Perfect for sealing around hoses, tubing, wiring or any other hole, joint, seam, void or gap to prevent fumes, moisture or noise penetration. Easy to apply and can be painted immediately. Contains twelve 1/4" x 12" strips.

PART	DESCRIPTION	PRICE
38-0779-F	STRIP CAULK	\$5.75



**Penetrating Graphite Powder** is an extra fine graphite powder that is odorless dry powder lubricant, used to guard against sticking, wear, and corrosion. Keeps brake cables, speedometer cables, control cables, hinges, locks and other metal applications working smoothly. Helps prevent corrosion and rust.

PART	DESCRIPTION	PRICE
42-0734	.21 OZ TUBE	\$3.95



**Seam Sealer** provides superior adhesion and flexibility without cracking or peeling. Its self-leveling qualities make it an excellent sealer on cowl, floor, doors and wheel house seams. Skin time is 1-2 minutes and can be painted in 30-60 minutes. Applies with a standard caulking gun.

PART	DESCRIPTION	PRICE
38-0781-F	11 OZ TUBE	\$16.45

## Paintucation Kevin Tetz Paintucation DVDs



**Paintucation DVD Set:** Contains all five Paintucation DVDs to help you repair and restore your vehicle's body from start to finish.

PART	DESCRIPTION	PRICE
38-0448-F	PAINTUCATION DVD SET	\$179.95

**Body Shop Basics:** Provides fundamental information about basic tool selection, simple dent repair, blending colors, gun technique, proper safety techniques and surface defect repair. 90 minutes

PART	DESCRIPTION	PRICE
38-0347-F	DVD-BODY SHOP BASICS	\$35.95

**Metal Prep & Rust Repair:** Demonstrates stripping metal with chemicals and sanders and illustrates fixing a rust patch from start to finish. Metal finishing and body filler techniques are shown, as well as surface rust removal, conversion and primer application. 75 minutes

PART	DESCRIPTION	PRICE
38-0348-F	DVD-METAL PREP&RUST REPAIR	\$29.45

**Body Panel Replacement:** Includes five different panel replacement projects covering welding sheet metal, gapping panels, "old school" leading, door skinning, partial panels, full quarter panel replacement, new sheet metal fitment, metal finishing and the latest panel adhesive. Double-sided DVD. 150 minutes

PART	DESCRIPTION	PRICE
38-0346-F	DVD-BODY PANEL REPLACEMENT	\$35.95

**Color Sanding & Buffing:** Explains what to do after the paint is dry and shows the difference between a "show" finish and a daily driver finish. Run repair techniques are shown in detail, as well as reviving old paint. Shows updated techniques using state-of-the-art compounds and pneumatic sanding systems designed to take the labor out of achieving a show-quality paint finish. 65 minutes

PART	DESCRIPTION	PRICE
38-0349-F	DVD-COLOR SANDING&BUFFING	\$29.45

**Paint Your Own Truck:** Instruction on proper paint gun techniques, panel alignment secrets, surface rust removal and application tips for fillers, primers and paints. Learn how to apply two-tone paint jobs, demonstrated in simple steps with detailed masking tips and tricks that yield professional results. 240 minutes

PART	DESCRIPTION	PRICE
38-0449-F	DVD PAINT YOUR OWN TRUCK	\$35.95

## Black Underhood Paint



**Black Underhood Paint's** specially formulated acrylic lacquer restores the finish of brackets, core supports, heater boxes and all underhood components. Withstands temperatures up to 250°F but is not designed to be applied to engine, manifolds or headers. 12 ounce can covers 6 square feet. Call or go online and order yours today!

PART	DESCRIPTION	APPLICATION	PRICE
37-8367-F	BLACK UNDERHOOD PAINT	12 OUNCE CAN	\$19.95

**ColorBond Prep/Cleaner** is a fast drying, non-solvent, multi-surface cleaner. It cleans and prepares the surface for use of ColorBond.

37-8399-F	COLORBOND PREP/CLEANER	12 OUNCE CAN	\$13.95
-----------	------------------------	--------------	---------

## Exterior Trim Paint

**ColorBond Exterior Trim Paint** has all the innovative features of ColorBond Interior Paint but is specially formulated to provide a stronger, more durable bond for exterior trim use. Exterior Trim Paint delivers a superior finish to exterior trim plastics and painted metal trim including: bumpers, mirrors, fender flares, wiper arms and window trim. Each 12 ounce can covers 6 square feet. Use ColorBond Adhesion Promoter #37-8395-F prior to application for a long-lasting finish.

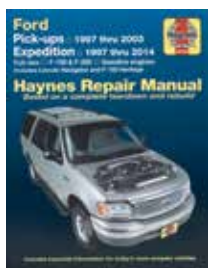


PART	DESCRIPTION	APPLICATION	PRICE
37-8361-F	EXTERIOR TRIM PAINT-SATIN BLACK	12 OUNCE	\$21.45
37-8362-F	EXTERIOR TRIM PAINT-SILVER	12 OUNCE	\$21.45

**ColorBond Adhesion Promoter** is required for the use of ColorBond on materials such as Polypropylene, Thermoplastic Elastomer, Polyolefin, Fiberglass and metal.

37-8395-F	COLORBOND ADHESION PROMOTER	12 OUNCE CAN	\$20.95
-----------	-----------------------------	--------------	---------

## Haynes Workshop Manual



42-0233

Contains step-by-step procedures for the 1997-14 Ford Expedition with hundreds of easy-to-follow photos. Written from "hands-on" experience using common tools. #42-0233 covers gasoline engines only. Order yours today!

PART	DESCRIPTION	PRICE
42-0233	HAYNES MANUAL	\$29.95

## Stacey David's Gearz Project Planning Book

Stacey David's Gearz Project Planning Book is a comprehensive guide to help you plan, budget, document and archive a complete project build from start to finish. This guide will help you stay more organized by planning ahead while keeping you on track and inspiring you to reach your project goals.

Each fill-in-the-blank section allows you to document the specific parts used, part numbers and costs involved. A table of contents breaks down the 22 color-coded sections. The 8 1/2" x 11" wire-bound book has 144 pages with a clear sleeve for receipts and photos.

*Stacey David's Gearz Project Planning Book written by Stacey David copyright 2015 Rattle Trap Productions, Inc.*



PART	DESCRIPTION	PRICE
38-4680-F	GEARZ PROJECT PLANNING BOOK	\$19.95





## Powr-Flo Throttle Body Spacers



48-4402

Powr-Flo Throttle Body Spacers are CNC-machined from billet aluminum and feature a bore engineered to increase velocity of airflow into intake manifold. This allows more air to reach combustion chamber for denser air charge and increase in fuel efficiency. The result is improved throttle response and power gains in mid-range and upper rpm operating ranges. Includes gaskets, hardware and instructions for a simple, bolt-on installation with no other vehicle modifications required.

PART	DESCRIPTION	APPLICATION	REQD	PRICE
48-4402	POWR-FLO SPACER	4.6L EXPEDITION 97-02 (1)		\$89.21
48-4403	POWR-FLO SPACER	5.4L EXPEDITION 97-03 (1)		\$89.21
48-4405	POWR-FLO SPACER	5.4L EXPEDITION 05-06 (1)		\$114.71

## JET Performance Powr-Flo Mass Air Flow Sensors

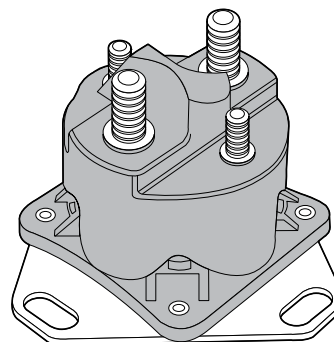


The JET Performance Powr-Flo Mass Air Flow Sensor delivers improved horsepower, torque and mileage by simply replacing the restrictive stock mass air flow sensor. JET Performance's flow bench-tested design provides up to a 45% increase in airflow. Sensors require no additional vehicle modifications and are fully compatible with other performance upgrades such as performance air filters, air intake kits, exhaust system modifications and throttle body spacers. Quick, easy installation.

PART	DESCRIPTION	APPLICATION	REQD	PRICE
48-4392	POWR-FLO MAF SENSOR	4.6L 5.4L 97-02	(1)	\$322.46

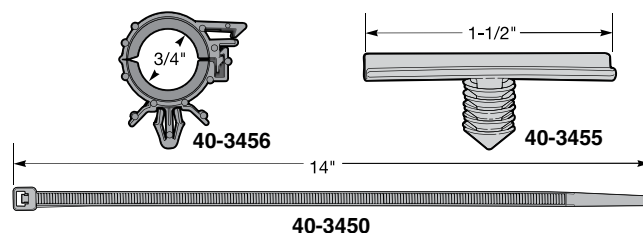
## Starter Solenoid

1997-02 Expedition



PART	DESCRIPTION	APPLICATION	REQD	PRICE
47-0677	STARTER SOLENOID	EXPEDITION 97-02 (1)		\$13.95

## Wire Retainers



PART	DESCRIPTION	BLACK	APPLICATION	REQD	PRICE
40-3453	RETAINER-HARNESS	BLACK	1/4"	(AR)	\$1.25
40-3454	RETAINER-HARNESS	BLACK	1/2"	(AR)	\$ .85
40-3456	RETAINER-HARNESS	BLACK	3/4"	(AR)	\$ .95
40-3457	RETAINER-HARNESS	BLACK	1"	(AR)	\$1.45
40-3455	RETAINER-HARNESS	WHITE	1-1/2"	(AR)	\$ .65
40-3450	CABLE STRAP-WIRE HARNESS	BLACK	14"	(AR)	\$1.25

## Stainless Steel Hose Clamps with "Ford" Logo



Personalize your engine compartment with these Stainless Steel Hose Clamps that include the "Ford" logo on the worm gear housing.

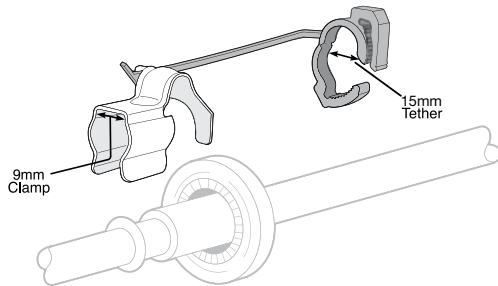
Ford Official Licensed Product is purchased from an authorized Ford Licensee.

PART	DESCRIPTION	PRICE
40-3370	5/8" - 1-1/4"	\$2.45
40-3375	1-1/2" - 2-1/2"	\$3.75



## Fuel Line Retainers

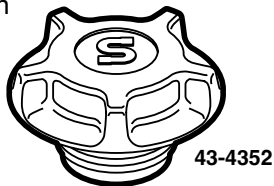
2004-06 Expedition



PART	DESCRIPTION	APPLICATION	REQD	PRICE
43-5100	RETAINER-9MM CLAMP X 15MM	TETHER 04-06	(AR)	\$10.95

## Oil Filler Cap

1997-06 Expedition

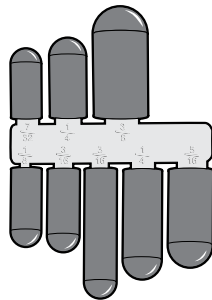


PART	DESCRIPTION	APPLICATION	REQD	PRICE
43-4352	OIL FILLER CAP	EXPEDITION 97-02	(1)	\$3.95
43-4355	OIL FILLER CAP 4.6L	EXPEDITION 03-04	(1)	\$5.95
43-4352	OIL FILLER CAP 5.4L	EXPEDITION 03-06	(1)	\$3.95

## Rubber Vacuum Caps

These Rubber Vacuum Caps are great for blocking off unused vacuum ports and lines, to prevent leaks and poor engine performance. Excellent for capping lines and hoses while testing carburetors, emission control systems, vacuum lines and more.

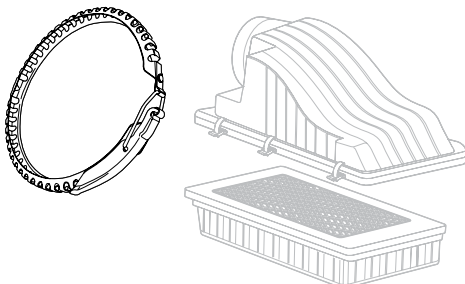
Caps are made from durable heat-resistant black rubber. Assortment contains one each of the following sizes: 5/32", 7/32", 5/16", 3/8" and two each of 3/16" and 1/4".



PART	DESCRIPTION	REQD	PRICE
30-1436-F	RUBBER VACUUM CAP ASSORTMENT	(1)	\$3.95

## Air Cleaner Clamp

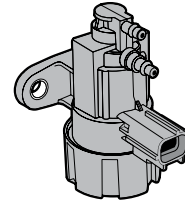
1997-04 Expedition



PART	DESCRIPTION	APPLICATION	REQD	PRICE
40-3438	CLAMP-AIR CLEANER	EXPEDITION 97-04	(1)	\$21.95

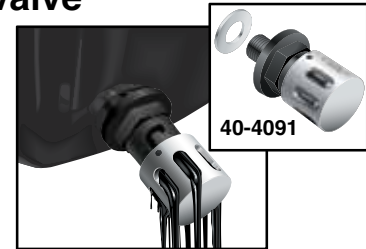
## EGR Vacuum Control Solenoid

1997-02 Expedition



PART	DESCRIPTION	APPLICATION	REQD	PRICE
42-5241	EGR VACUUM CONTROL SOLENOID	EXPEDITION 97-02	(1)	\$24.95

## EZ Oil Drain Valve



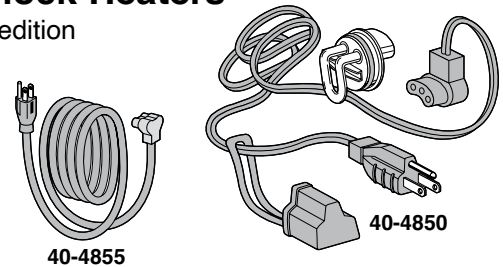
EZ Oil Drain Valve allows quick oil changes with little to no mess. Compact design has no lever to catch on obstacles. Adaptors are not required and easily installs with socket or wrench. Aluminum crush washer (included) ensures tight, leak-free seal.

Simple operation; push in cap, twist to the right and drain. Once drained, push in and twist to left to close. Spring-tensioned, double o-ring seal guarantees a long, leak-free life.

PART	DESCRIPTION	APPLICATION	REQD	PRICE
40-4091	EZ OIL DRAIN VALVE	4.6L 5.4L 97-06	(1)	\$13.95

## Engine Block Heaters

1997-06 Expedition



A pre-heated engine saves on fuel costs, starts quicker, runs smoother, warms cab interior, defrosts quicker and reduces engine wear and tear.

Engine Block Heaters are complete with cord and detailed easy-to-follow instructions for a simple installation directly into your engine block.

PART	DESCRIPTION	APPLICATION	REQD	PRICE
40-4853	ENGINE BLOCK HEATER KIT	4.6L 97-06	(1)	\$34.95
40-4850	ENGINE BLOCK HEATER KIT	5.4L 97-06	(1)	\$34.95
40-4855	REPLACEMENT CORD	97-06	(1)	\$17.95

## AC and Fuel Line Disconnect Tool Set

Disconnects Air Conditioning and Quick-Connect Fuel Lines.

This handy Disconnect Tool Set disconnects the spring lock couplings on air conditioning lines, and fuel line quick connect couplings.

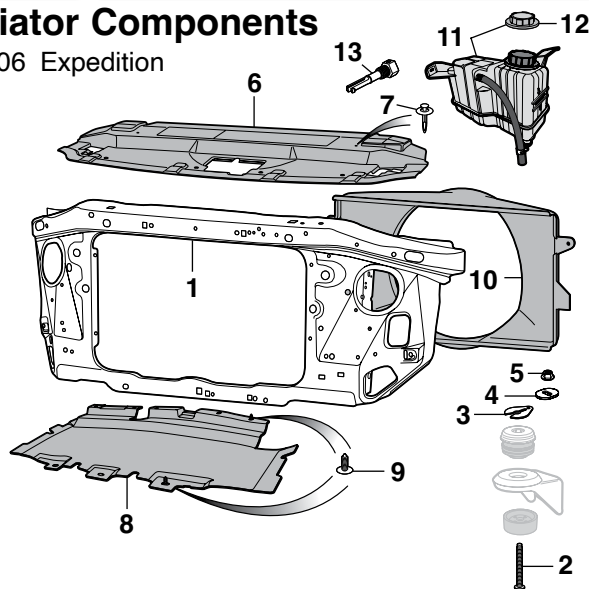
Easy to use in confined spaces. Set includes six sizes: 5/16", 3/8", 1/2", 5/8", 3/4" and 7/8".



PART	DESCRIPTION	PRICE
42-1397	AC-FUEL LINE DISCONNECT TOOL SET	\$9.45

## Radiator Components

1997-06 Expedition



Build date can be found on the inside driver's door pillar.

PART	ILL#	DESCRIPTION	"A"	APPLICATION	REQD	PRICE
43-2866-T	(1)	RADIATOR SUPPORT	"A"	EXPEDITION 97-02 (1)	(1)	\$159.95
40-0284	(2)	RADIATOR CORE MOUNT BOLT		EXPEDITION 97-02 (2)	(2)	\$3.95
40-0712	(3)	SHIM		EXPEDITION 97-02 (2)	(2)	\$2.45
50-0620	(4)	FLAT WASHER		EXPEDITION 97-02 (2)	(2)	\$2.95
40-0819	(5)	NUT		EXPEDITION 97-02 (2)	(2)	\$1.45
41-1610	(6)	AIR DEFLECTOR-UPPER		EXPEDITION 97-02 (1)	(1)	\$89.95*
40-1618	(7)	RETAINER		EXPEDITION 97-06 (8)	(8)	\$.75
41-1616	(8)	AIR DEFLECTOR-LOWER		EXPEDITION 99-02 (1)	(1)	\$21.95
40-1619	(9)	RETAINER		EXPEDITION 97-06 (AR)	(AR)	\$.75
43-2901	(10)	FAN SHROUD	"B"	EXPEDITION 97-98 (1)	(1)	\$36.95
43-0102	(11)	RADIATOR OVERFLOW TANK		EXPEDITION 97-02 (1)	(1)	\$69.95
43-0023	(12)	CAP-COOLANT		EXPEDITION 97-06 (1)	(1)	\$6.95
43-0082	(13)	RADIATOR DRAIN TAP		EXPEDITION 97-06 (1)	(1)	\$5.50

Note: "A" Without holes to mount crash sensors.

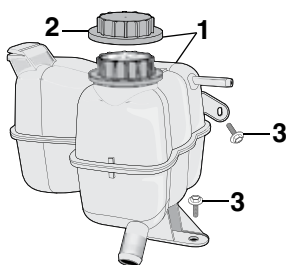
"B" Models produced before 9/8/97.

-T after a part number means that part must be shipped Truck Freight. An additional \$150.00 will be charged to your order for delivery in the 48 contiguous United States. Orders outside of the 48 states will be quoted. Additional delivery time required.

\* Or \*\* after the sell price means your order will incur an Oversize Part Charge for each oversized part. \* Means extra charge will be \$20. \*\* Means extra charge will be \$50. Due to packing and/or transportation requirements, please allow additional time for delivery. Oversized Parts are not available for air delivery.

## Radiator Overflow Tank

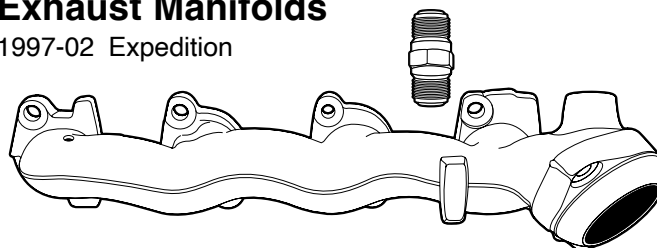
2003-06 Expedition



PART	ILL#	DESCRIPTION	APPLICATION	REQD	PRICE
43-0103	(1)	RADIATOR OVERFLOW TANK	EXPEDITION 03-06 (1)	(1)	\$59.95
43-0023	(2)	CAP-OVERFLOW TANK	EXPEDITION 03-06 (1)	(1)	\$6.95
50-0235	(3)	BOLT-OVERFLOW TANK	EXPEDITION 03-06 (2)	(2)	\$.75

## Exhaust Manifolds

1997-02 Expedition



48-5962

PART	DESCRIPTION	APPLICATION	REQD	PRICE
48-5962	EXHAUST MANIFOLD-LH	5.4L EXPEDITION 99-02 (1)	(1)	\$59.95
48-5963	EXHAUST MANIFOLD-RH	5.4L EXPEDITION 99-02 (1)	(1)	\$59.95
40-4172	GASKET SET	5.4L EXPEDITION 97-02 (1)	(1)	\$6.95

## Transmission Oil Cooler

1997-00 Expedition



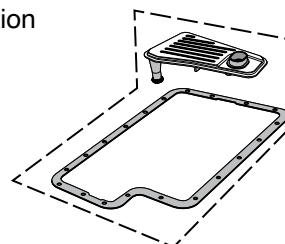
This Transmission Oil Cooler is quality-engineered for a longer service life. An ideal replacement part, the transmission oil cooler helps prevent transmission overheating, helping to protect the transmission from costly damage.

PART	DESCRIPTION	APPLICATION	REQD	PRICE
43-3159	TRANSMISSION OIL COOLER "A"	EXPEDITION 97-00 (1)	(1)	\$79.95

Note: "A" For models w/ 4.2L or 4.6L. With 3/8" inverted nut fittings. 4R70W

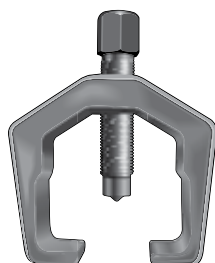
## Transmission Filter Kits

1997-02 Expedition



PART	DESCRIPTION	APPLICATION	REQD	PRICE
43-7044	TRANS FILTER KIT	2WD E40D/4R100 97-02 (1)	(1)	\$17.95
43-7046	TRANS FILTER KIT	4WD E40D/4R100 97-02 (1)	(1)	\$15.95

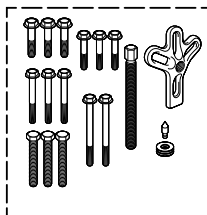
## Pitman Arm Puller



The Pitman Arm Puller features a forged, heat-treated steel yoke that is designed to wrap securely around the pitman arm to allow for easy removal. Heavy-duty center screw has pointed tip and 3/4" hex head. Opening: 1-5/16" (33mm). Depth: 2-1/2" (64mm).

PART	DESCRIPTION	PRICE
34-2202-F	PITMAN ARM PULLER	\$20.95

## Harmonic Balancer Puller



Removes harmonic balancer from engine without risk of damage. Four-slot, heavy-duty yoke handles any pulling job. Extra-long center screw is machined for use with included adaptor tip that centers puller on crankshaft for quick and damage-free removal. Includes five sets of hardened, flange-head bolts in standard and metric thread sizes for most engines. Order today!

PART	DESCRIPTION	PRICE
38-1222-F	HARMONIC BALANCER PULLER	\$24.95

## Harmonic Balancer Installer

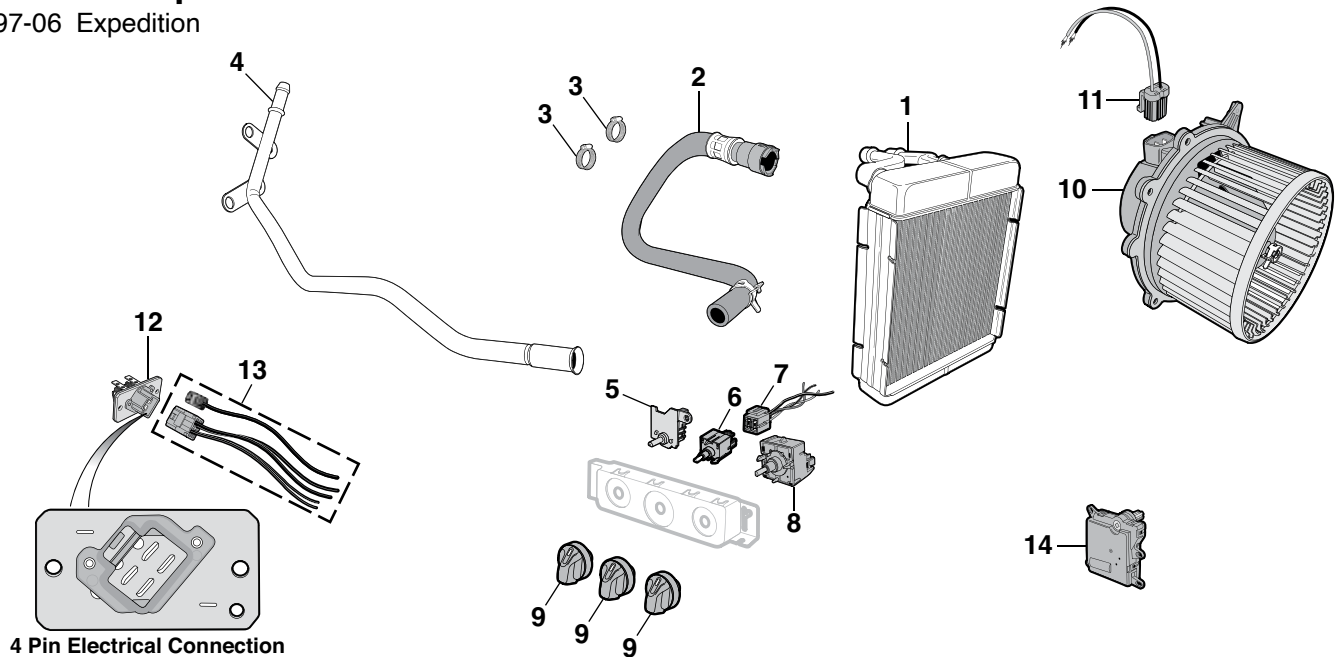


Threaded forcing screw uses a bearing to easily slide harmonic balancer into place. Includes five standard and seven metric threaded adaptors for use on a wide range of engines.

PART	DESCRIPTION	PRICE
38-1223-F	HARMONIC BALANCER INSTALLER	\$76.95

## Heater Components

1997-06 Expedition



PART	ILL#	DESCRIPTION	APPLICATION	REQD	PRICE
43-2538	(1)	HEATER CORE-FRONT	EXPEDITION 97-02	(1)	\$39.95
43-3054	(2)	HEATER HOSE-RETURN	EXPEDITION 97-02	(1)	\$29.95
40-3425	(3)	CLAMP-HOSE	EXPEDITION 97-02	(2)	\$1.95
43-3055	(4)	WATER PUMP OUTLET TUBE	4.6L	97-02 (1)	\$29.95
47-0974	(5)	TEMP SWITCH W/MANUAL AC	EXPEDITION 97-02	(1)	\$25.95
47-0842	(6)	FAN SWITCH-FRONT	EXPEDITION 97-02	(1)	\$19.25
47-3608	(7)	SOCKET-FAN SWITCH-FRONT	EXPEDITION 97-02	(1)	\$8.95
47-0986	(8)	SELECTOR SWITCH W/MANUAL AC	EXPEDITION 97-02	(1)	\$34.95
40-2604	(9)	KNOB-FRONT	"B" EXPEDITION 97-02	(3)	\$8.95

PART	ILL#	DESCRIPTION	APPLICATION	REQD	PRICE
43-2444	(10)	BLOWER MOTOR W/FAN-FRONT	EXPEDITION 97-02	(1)	\$49.95
43-2445	(11)	BLOWER MOTOR W/FAN	EXPEDITION 03-06	(1)	\$42.95
47-0911	(11)	SOCKET-BLOWER MOTOR	EXPEDITION 97-02	(1)	\$8.95
47-1004	(12)	HEATER RESISTOR-4 PIN	EXPEDITION 97-02	(1)	\$17.95
47-1005	(13)	SOCKET-RESISTOR-4 PIN	EXPEDITION 97-02	(1)	\$9.95
43-2480	(14)	ACTUATOR-HOT/COLD BLEND "C"	EXPEDITION 97-02	(1)	\$26.95

Note: "A" Models without auxiliary heater.  
 "B" Mixed three pack with one knob that fits this truck.  
 "C" Front actuator for models with manual temperature control.

## Fuel Pump Driver Module

Fuel Pump Driver Module has been re-engineered to provide longer service life and improved fuel pump performance. Module has powder coated finish for improved corrosion resistance and uses rubber mounting bushings to space the module away from the vehicle frame, providing protection against vibration. Module also features an improved microprocessor that precisely controls fuel pump pulse timing and response.



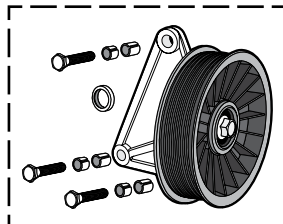
PART	DESCRIPTION	APPLICATION	REQD	PRICE
43-4770	FUEL PUMP DRIVER MODULE	EXPEDITION 05-06	(1)	\$70.99

## Air Conditioner Bypass Pulley

1997-02 Expedition

**Tech Tip**

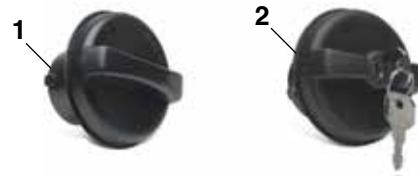
**A/C Bypass Pulley:** Your truck will not run with a seized A/C compressor. Save time and money with an A/C bypass pulley. Remove A/C compressor, install A/C bypass pulley and original size belt and then you are back on the road.



PART	DESCRIPTION			APPLICATION	REQD	PRICE
43-2288	A/C BYPASS	PULLEY	4.6L 5.4L	EXPEDITION	97-02 (1)	\$57.95

## Gas Caps

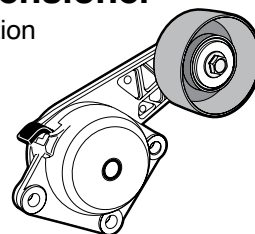
1997-06 Expedition



PART	ILL#	DESCRIPTION	APPLICATION	REQD	PRICE
43-4127	(1)	GAS CAP-NON LOCKING	EXPEDITION 97-04	(1)	\$7.95
43-4128		GAS CAP-NON LOCKING	EXPEDITION 05-06	(1)	\$7.95
43-4137	(2)	GAS CAP-LOCKING	EXPEDITION 97-04	(1)	\$17.95
43-4141		GAS CAP-LOCKING	EXPEDITION 05-06	(1)	\$16.95

## Auto Belt Tensioner

1997-06 Expedition

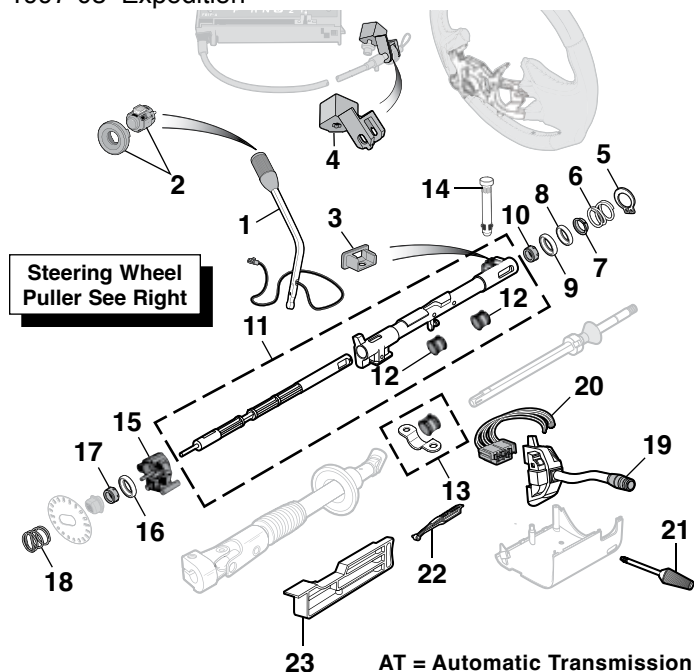


PART	DESCRIPTION	APPLICATION	REQD	PRICE
43-2286	AUTO BELT TENSIONER	4.6L 5.4L "A"	97-06 (1)	\$37.95

Note: "A" Fits models with smooth pulley.

## Steering Column Components

1997-05 Expedition

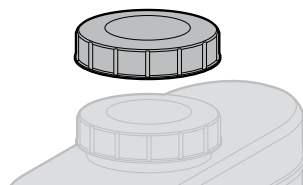


PART	ILL#	DESCRIPTION	APPLICATION	REQD	PRICE
45-0789	(1)	SHIFT LEVER W/OVERDRIVE	AT EXPEDITION 97-02	(1)	\$54.95
45-0792	(2)	OVERDRIVE SHIFT BUTTON SET	EXPEDITION 03-05	(1)	\$10.95
45-0837	(3)	SHIFT TUBE DAMPER-RUBBER	AT EXPEDITION 97-02	(1)	\$6.45
49-6300	(4)	SHIFT INDICATOR BRACKET	AT EXPEDITION 97-02	(1)	\$14.95
40-1376	(5)	RETAINER	EXPEDITION 97-02	(1)	\$7.95
40-3222	(6)	UPPER COLUMN SPRING	EXPEDITION 97-02	(1)	\$19.95
40-3224	(7)	TOLERANCE RING	EXPEDITION 97-02	(1)	\$31.95
45-0743	(8)	UPPER BEARING-SMALL	EXPEDITION 97-02	(1)	\$5.25
45-0745	(9)	UPPER BEARING-LARGE	W/TILT EXPEDITION 97-02	(1)	\$7.95
45-0799	(10)	SLEEVE	W/TILT EXPEDITION 97-02	(1)	\$7.95
45-0829	(11)	SHIFT TUBE KIT	AT EXPEDITION 97-02	(1)	\$35.95
45-0835	(12)	BUSHING-SHIFT TUBE	AT EXPEDITION 97-02	(2)	\$1.95
45-0836	(13)	CLAMP W/BUSHING-TUBE	AT EXPEDITION 97-02	(2)	\$16.95
45-0840	(14)	PIN-SHIFT TUBE	AT EXPEDITION 97-02	(1)	\$4.25
45-0806	(15)	RETAINER-LOWER BEARING	EXPEDITION 97-02	(1)	\$20.95
45-0745	(16)	LOWER COLUMN BEARING	EXPEDITION 97-02	(1)	\$7.95
45-0798	(17)	SLEEVE-LOWER BEARING	EXPEDITION 97-02	(1)	\$4.45
40-3223	(18)	LOWER COLUMN SPRING	W/TILT EXPEDITION 97-02	(1)	\$32.95
47-0844	(19)	TURN/WIPER SWITCH	EXPEDITION 99-02	(1)	\$79.95
47-3595	(20)	SOCKET-SWITCH	EXPEDITION 97-98	(1)	\$9.95
45-0812	(21)	TILT LEVER	EXPEDITION 97-02	(1)	\$31.95
45-0768	(22)	COLUMN ACTUATOR	EXPEDITION 97-02	(1)	\$9.45
45-0773	(23)	STEERING LOCK LEVER	EXPEDITION 97-02	(1)	\$29.95

AT = Automatic Transmission

## Brake Master Cylinder Cap

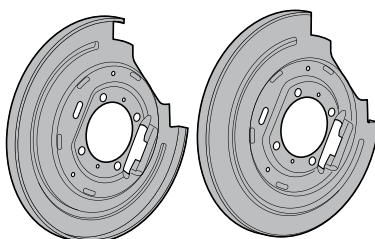
1997-02 Expedition



PART	DESCRIPTION	PRICE
45-3619	CAP W/GASKET	\$8.95

## Disc Brake Shield Set

1997-02 Expedition



PART	DESCRIPTION	PRICE
45-3370	DISC BRAKE SHIELD SET	\$96.95

## Master Cylinder Brake Lines

1997-99 Expedition

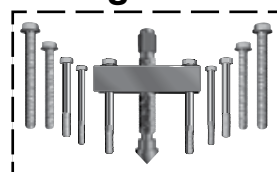


SS = Stainless Steel  
GVW = Gross Vehicle Weight Rating

PART	DESCRIPTION	APPLICATION	REQD	PRICE
45-4725	PRIMARY-SS 7/16"-24 "A"	F150 F250 97-99	(1)	\$46.95
45-4726	SECONDARY-SS 9/16"-18 "A"	F150 F250 97-99	(1)	\$46.95

Note: "A" Under 8,500 LBS GVW.

## Steering Wheel Puller



Steering Wheel Puller features forged, milled yoke and center screw with pointed/removable adaptor. Includes five sets of bolts in standard and metric sizes. Can also be used to remove pulleys, flanges and gears.

PART	DESCRIPTION	PRICE
38-1199-F	STEERING WHEEL PULLER	\$31.95

## Brake Shoe Adjustment Tool

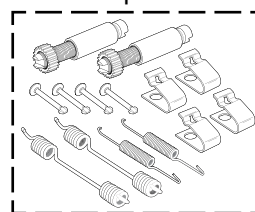


Brake Shoe Adjustment Tool adjusts the clearance between the brake drum and the brake shoe through the backing plate (providing the manufacturer has made provisions). Simply remove the rubber plug to access the star adjustment bar without having to remove the drum.

PART	DESCRIPTION	REQD	PRICE
38-1291-F	BRAKE SHOE ADJUSTMENT TOOL	(1)	\$6.95

## Parking Brake Hardware Kit

1997-02 Expedition



This all-in-one 14-piece Parking Brake Hardware Kit is designed to match the original hardware and includes everything required to service or repair your truck's parking brake. Made of quality components, this kit is engineered for reliable performance and durability.

PART	DESCRIPTION	APPLICATION	REQD	PRICE
45-3546	PARKING BRAKE HARDWARE KIT	EXPEDITION 97-02	(1)	\$17.95

## Overdrive Shift Button Set

1997-02 Expedition



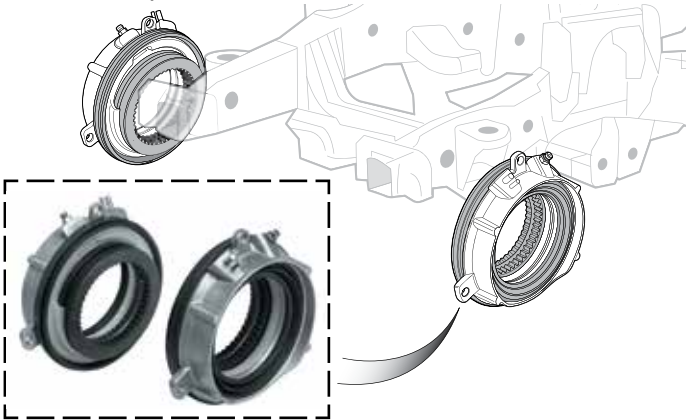
This automatic transmission Overdrive Shift Button Set matches the original parts to repair a missing or damaged overdrive button. Set includes button and cap.

PART	DESCRIPTION	PRICE
45-0792	OVERDRIVE SHIFT BUTTON SET	\$10.95



## Vacuum Hub Actuator Delete Kit

2003-06 Expedition



The internal diaphragm on vacuum-activated hub actuators is highly failure-prone. This easy-to-install kit restores 4WD function while bypassing the problematic original functions for greater reliability. Includes vacuum caps for holding remnant lines which allows for restoring original function in the future. Kit will service both front hubs.

PART	DESCRIPTION	APPLICATION	REQD	PRICE
48-3852	VACUUM HUB ACTUATOR DELETE KIT	EXPEDITION 03-06	(1)	\$113.95

## Auto Locking Hub Actuator

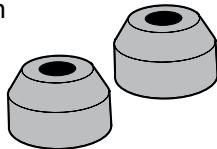
1997-02 Expedition



PART	DESCRIPTION	APPLICATION	REQD	PRICE
48-3851	ACTUATOR-AUTO LOCKING HUB	EXPEDITION 01-02	(2)	\$39.95
48-3847	SHIFT FORK KIT-FRONT DIFF	EXPEDITION 97-02	(1)	\$37.95

## Polyurethane Tie Rod Boots

1997-01 Expedition



Replacements for when disassembly ruins existing rubber boots. Lasts longer, seals longer and looks better. They seal out contaminants and prevent loss of lubricant.

PART	DESCRIPTION	APPLICATION	REQD	PRICE
34-0280-F	TIE ROD END BOOT SET	EXPEDITION 97-01	(1)	\$4.95

## Front Differential Cable Lock Kit ... Cures Slow to No-Engagement Blues !

1997-02 Expedition

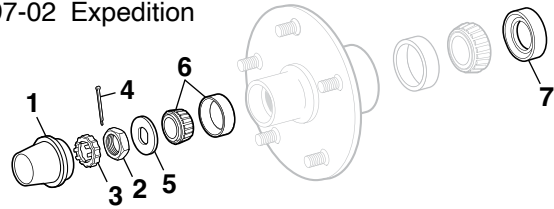
Works like hubs with full control from inside the cab without stopping, in any temperature. Will not disengage when ignition is turned off or if differential is submerged in mud, water or snow. Two-wheel drive low range benefits from bind-free steering AND high rear axle torque. This feature is not available with factory systems and is beneficial when maneuvering trailers. Reduces front differential wear and right axle breakage.

Differential Lock Kit is compatible with manually (lever) or electrically (push button) engaged transfer cases. Easily installed in one to two hours with basic hand tools. No internal axle or differential work required.

PART	DESCRIPTION	APPLICATION	REQD	PRICE
43-7435	DIFFERENTIAL LOCK KIT	EXPEDITION 97-02	(1)	\$199.95

## Front Wheel Bearings - 2 Wheel Drive

1997-02 Expedition



PART	ILL#	DESCRIPTION	APPLICATION	REQD	PRICE
40-1962	(1)	GREASE CAP	EXPEDITION 97-02	(2)	\$3.45
40-0692	(2)	SPINDLE NUT	EXPEDITION 97-02	(2)	\$3.95
40-0693	(3)	NUT RETAINER	EXPEDITION 97-02	(2)	\$2.45
30-2730-F	(4)	COTTER PIN	EXPEDITION 97-02	(2)	\$.65
40-0697	(5)	WASHER	EXPEDITION 97-02	(2)	\$1.95
45-0512	(6)	WHEEL BEARING-OUTER	EXPEDITION 97-02	(2)	\$6.95
45-0124	(7)	SEAL	EXPEDITION 97-02	(2)	\$1.95

## Chrome Differential Cover

Ford 8.8" Ring Gear

Heavy-Duty Sterling 12 Bolt



48-2042



48-2043  
Heavy-Duty Sterling



30-2543-F

PART	DESCRIPTION	APPLICATION	REQD	PRICE
48-2042	CHROME COVER-REAR-8.8"	EXPEDITION 97-02	(1)	\$20.95
40-4031	GASKET-8.8"	EXPEDITION 97-02	(1)	\$4.95
48-2043	CHROME COVER-REAR-HD STERLING	EXPEDITION 97-06	(1)	\$30.95
40-4032	GASKET-HD STERLING	EXPEDITION 97-06	(1)	\$2.95
30-2543-F	CHROME DIFFERENTIAL BOLT SET	EXPEDITION 97-06	(1)	\$6.95

## Wheel Bearing Grease Packer

Wheel Bearing Grease Packer quickly flushes out old grease and repacks the bearings with less the mess. The Wheel Bearing Grease Packer works on bearings up to 3 1/2" outer diameter. The grease stays in the tool cavity, not on your hands. To pack a bearing, simply place the bearing on the piston, press down on the cap until the old grease is forced out and the new grease shows on top of the bearing.



PART	DESCRIPTION	PRICE
45-0509	WHEEL BEARING GREASE PACKER	\$26.95



43-7435



## Shock Absorbers ... Driving Control, Even Ride and Performance Handling



48-1646

**GR-2 Gas Shock Absorbers:** Features lower pressure for riding comfort, with improved handling and response only gas shocks can provide at an economical price. The economical way to step up from hydraulic shocks to the quality ride and control of gas.

PART	DESCRIPTION	APPLICATION	REQD	PRICE
<b>Expedition 2 Wheel Drive</b>				
48-1646	KYB GR2 SHOCK-REAR	"A" 2WD EXPEDITION 97-02 (2)		\$59.54
<b>Expedition 4 Wheel Drive</b>				
48-1646	KYB GR2 SHOCK-REAR	"B" 4WD EXPEDITION 97-02 (2)		\$59.54



48-1669

**Gas-A-Just Shock Absorbers:** Features higher gas pressure to provide unsurpassed control on even the most demanding roads. Eliminates the age old problem of performance fade by eliminating aeration and foaming, a problem with other shocks that use two-tube construction that allows air to mix with fluid.

PART	DESCRIPTION	APPLICATION	REQD	PRICE
<b>Expedition 2 Wheel Drive</b>				
48-1669	KYB GAS-A-JUST SHOCK-REAR	"A" 2WD EXPEDITION 97-02 (2)		\$67.16
<b>Expedition 4 Wheel Drive</b>				
48-1669	KYB GAS-A-JUST SHOCK-REAR	"B" 4WD EXPEDITION 97-02 (2)		\$67.16

Note: "A" Without rear air-leveling.

"B" Without all wheel air-leveling suspension system.

## Heavy-Duty Gas-Charged Shocks



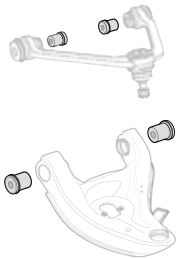
45-2341

Heavy-Duty (HD) Gas-Charged Shocks limit unsafe roll or sway when cornering and regain control of spring and suspension movement.

PART	DESCRIPTION	APPLICATION	REQD	PRICE
45-2341	HD GAS-CHARGED SHOCK-FRONT	"A" 4WD EXPEDITION 97-02 (2)		\$32.95

Note: "A" For models without all wheel air-leveling system.

## Polyurethane Front Control Arm Bushing Sets



Front Control Arm Bushings are a must for increased control when cornering. They also help maintain proper alignment and reduce deflection caused by road irregularities.

PART	DESCRIPTION	APPLICATION	REQD	PRICE
45-2560	CONTROL ARM BUSHING SET	2WD EXPEDITION 97-02 (1)		\$88.95
45-2561	CONTROL ARM BUSHING SET	4WD EXPEDITION 97-02 (1)		\$115.95

## Coil Spring Compressor

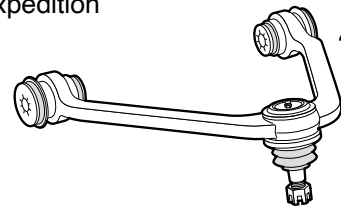


Remove and install coil springs with convenience and safety. Features safety U-bolt set, Acme threaded rods and ductile alloy cast hooks for safe and easy operation.

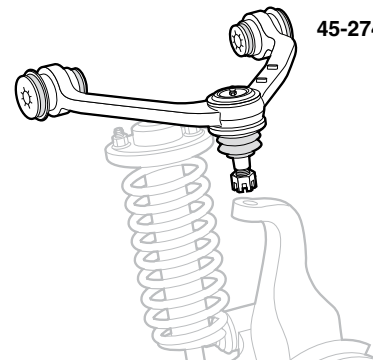
PART	DESCRIPTION	APPLICATION	PRICE
34-2808-F	COIL SPRING COMPRESSOR	3 SHAFTS	\$49.95

## Upper A-Arm Assembly

1997-02 Expedition



45-2740



45-2742

PART	DESCRIPTION	APPLICATION	REQD	PRICE
45-2740	UPPER A-ARM ASSEMBLY-LH	2WD EXPEDITION 97-02 (1)		\$39.95
45-2741	UPPER A-ARM ASSEMBLY-RH	2WD EXPEDITION 97-02 (1)		\$39.95
45-2742	UPPER A-ARM ASSEMBLY-LH	4WD EXPEDITION 97-02 (1)		\$39.95
45-2743	UPPER A-ARM ASSEMBLY-RH	4WD EXPEDITION 97-02 (1)		\$39.95

## 4 EASY WAYS TO ORDER PARTS

**ONLINE**

**www.LMCtruck.com**  
Fast, Simple, Safe!

**PHONE**

**(800) 562-8782**

**FAX**

**(800) 541-8525 USA & Canada**  
**(800) 599-0323 Worldwide**

**MAIL**

**P.O. Box 14991**  
**Lenexa, KS 66285-4991**

## Header Wrap

Increase performance by keeping hot exhaust gasses inside the headers for maximum velocity, improved exhaust scavenging and protecting sensitive engine components from high temperatures.

Header Wrap is able to withstand temperatures up to 1,200°F and is made from vermiculite-coated, textured fiberglass yarn woven into a strong, flexible wrap that can easily be cut with scissors.



Available in 25 or 50-foot rolls of 1" or 2" widths. Two 50-foot rolls of 2" wide are generally enough to wrap standard V8 headers. Stainless steel locking cable ties keep the wrap securely in place. *Header Wrap can void warranty of some headers. Check header manufacturer's warranty before installing.*

Headers with tight bends should use 1" wide wrap for coverage. Overlap wrap 1/4" for optimum heat dissipation.

PART	DESCRIPTION	APPLICATION	PRICE
36-6181-F	HEADER WRAP	1" X 25'	\$10.95
36-6182-F	HEADER WRAP	1" X 50'	\$20.95
36-6183-F	HEADER WRAP	2" X 25'	\$16.45
36-6184-F	HEADER WRAP	2" X 50'	\$29.95
30-1793-F	CABLE TIE-SS	7-1/2"	\$2.95
30-1794-F	CABLE TIE-SS	14-1/2"	\$3.95

## Shorty Headers ... Bolt-On Power and Performance



Shorty Headers are an easy, bolt-on installation that connects to stock Y-pipes and adds power and performance to your truck. They are made from mandrel-bent, 16-gauge tubing for durability and feature milled CNC-machined thick steel flanges for a better seal.



Available with a black painted finish.

PART	DESCRIPTION	APPLICATION	REOD	PRICE
48-6174	SHORTY HEADER-BLACK	4.6L EXPEDITION	97-02 (1)	\$259.95
48-6175	SHORTY HEADER-BLACK	5.4L EXPEDITION	97-02 (1)	\$249.95
46-6096	HEADER BOLT SET	4.6L 5.4L	97-02 (1)	\$14.95
46-6126	HEADER GASKET SET	4.6L 5.4L	97-02 (1)	\$17.95

## Thermal Spark Plug Boot Sleeve Set

Thermal Spark Plug Boot Sleeves provide thermal protection against hot exhaust headers. Double-layer gray fiberglass sleeves are non-conductive and can directly contact hot surfaces without harmful effects. Chemically-resistant 3/4" diameter braided sleeves easily slip over any spark plug wire and boot configuration to protect from temperatures up to 1,200°F. Call or go online and order yours today!

PART	DESCRIPTION	PRICE
36-6190-F	SPARK PLUG BOOT SLEEVE SET	\$14.45



## Stainless Steel Exhaust Tips



Blunt Tip



Angle Tip



31-0560-F

Made from 16-gauge 304 grade stainless steel for longer life and measure 15" long with 3-1/2" diameter outlets. Two inlet sizes are available to fit 2-1/4" and 2-1/2" outer diameter exhaust pipes. Exhaust Tips can be welded on or clamped on with #31-0560-F or #31-0561-F Stainless Steel Exhaust Clamps that must be purchased separately.

PART	DESCRIPTION	APPLICATION	PRICE
38-6830-F	EXHAUST TIP-STAINLESS STEEL	2-1/4" BLUNT TIP	\$46.95
38-6831-F	EXHAUST TIP-STAINLESS STEEL	2-1/4" ANGLE TIP	\$52.95
31-0560-F	CLAMP-STAINLESS STEEL	2-1/4"	\$9.60
38-6832-F	EXHAUST TIP-STAINLESS STEEL	2-1/2" BLUNT TIP	\$59.95
38-6833-F	EXHAUST TIP-STAINLESS STEEL	2-1/2" ANGLE TIP	\$59.95
31-0561-F	CLAMP-STAINLESS STEEL	2-1/2"	\$10.40

## Mini Tube Cutter



Mini Tube Cutter allows quick and simple cutting of Fuel & Brake lines from 1/8" to 5/8" OD. The compact design ensures easy access to even the tightest of spots. Cutter will cut through Steel, Aluminum, Plastic, Copper and Brass line.

PART	DESCRIPTION	PRICE
38-1372-F	MINI TUBE CUTTER	\$8.95

## Chrome Exhaust Tips



Blunt Tip



Angle Tip

Chrome Exhaust Tips are triple chrome plated and available in both angle and blunt outlets. They are 9" long and available to fit two sizes: 2-1/4" and 2-1/2" outer diameter exhaust pipes.

Chrome Exhaust Tips can be easily installed with exhaust clamps that are included with tips or welded on for a smoother look.

PART	DESCRIPTION	APPLICATION	PRICE
38-6834-F	EXHAUST TIP-CHROME W/CLAMP	2-1/4" BLUNT TIP	\$32.95
38-6835-F	EXHAUST TIP-CHROME W/CLAMP	2-1/4" ANGLE TIP	\$24.95
38-6836-F	EXHAUST TIP-CHROME W/CLAMP	2-1/2" BLUNT TIP	\$37.95
38-6837-F	EXHAUST TIP-CHROME W/CLAMP	2-1/2" ANGLE TIP	\$24.95

## Flare Tool Set



SAE Flare Tool Set allows quick repair of Fuel, Brake, Oil and Transmission lines, taking the guesswork out of creating single and double flares. Will work with 3/16", 1/4", 5/16", 3/8" and 1/2" tube. Capable of creating single flares in copper, aluminum and brass tubing, double flares in soft steel tubing.

PART	DESCRIPTION	PRICE
38-1374-F	SAE FLARE TOOL SET	\$34.95



## Heated Windshield Washer Kit



Heat your washer fluid to a temperature of 125-135°F for quick, effortless removal of frost, snow and ice this winter. Provides improved visibility for all driving conditions, while extending the service life of your windshield wipers by minimizing unnecessary wear. Ensures clog-free wiper spray nozzles for consistent spray pattern. Can also be used year-round to remove bird droppings, bugs, grime, road film and streaks.

Installs inline between windshield washer reservoir and spray nozzles. Connects directly to your battery with the included ground cable and fused power cable. Order yours today and see what a difference the Heated Windshield Washer Kit can make! Kit includes mounting bracket, hardware and instructions.

PART	DESCRIPTION	REQD	PRICE
36-4085-F	HEATED WINDSHIELD WASHER KIT	(1)	\$105.95

## Windshield Wiper

2003-06 Expedition

Wiper Arm Tool provides the leverage needed to safely remove and install wiper arms without damaging the vehicle.

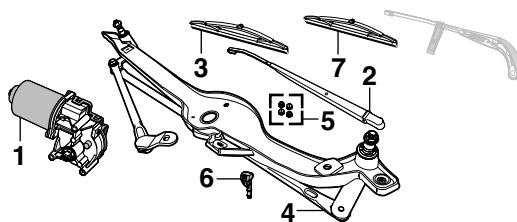
**Tech Tip:** All locking pins or retaining nuts must be removed before using the Wiper Arm Tool.



PART	ILL#	DESCRIPTION	APPLICATION	REQD	PRICE
47-3991	(1)	WIPER BLADE-FRONT	EXPEDITION 03-06	(2)	\$3.95
38-1335-F	(2)	WIPER ARM TOOL		(1)	\$6.95

## Windshield Wiper and Components

1997-02 Expedition



PART	ILL#	DESCRIPTION	APPLICATION	REQD	PRICE
47-4069	(1)	WIPER MOTOR-FRONT	EXPEDITION 97-02	(1)	\$66.95
47-3870	(2)	WIPER ARM-FRONT-LH	EXPEDITION 97-02	(1)	\$31.95
47-3871	(3)	WIPER ARM-FRONT-RH	EXPEDITION 97-02	(1)	\$31.95
47-3991	(3)	WIPER BLADE-FRONT	EXPEDITION 97-02	(2)	\$3.95
47-3978	(4)	WIPER TRANSMISSION LINKAGE	EXPEDITION 97-02	(1)	\$107.95
47-3850	(5)	LINKAGE BUSHING SET-FRONT	EXPEDITION 97-02	(1)	\$8.95
47-3860	(6)	SPRAY NOZZLE-FRONT	EXPEDITION 97-02	(2)	\$9.45
36-4012-F	(7)	WIPER BLADE-REAR	EXPEDITION 97-02	(1)	\$6.45

## Battery Disconnect Switches



36-0809-F

36-0813-F

36-0709-F

36-0909-F

Battery Disconnect Switches are easy to install and stop battery drain and reduce the risk of fire while your vehicle is parked. With key or knob style disconnects, the key or knob can be totally removed as an additional deterrent against vehicle theft. A 15-amp Bypass Fuse is available to maintain memory on your radio, clock, etc., while your battery is disconnected.

PART	DESCRIPTION	APPLICATION	REQD	PRICE
36-0809-F	BATTERY DISCONNECT-KNOB STYLE	TOP POST	(1)	\$6.95
36-0813-F	BATTERY DISCONNECT-KNIFE STYLE	TOP POST	(1)	\$30.95
36-0709-F	BATTERY DISCONNECT-KEY STYLE	IN LINE	(1)	\$10.95
36-0909-F	BYPASS FUSE-15 AMP	IN LINE	(1)	\$6.45

## Battery Post and Terminal Cleaner



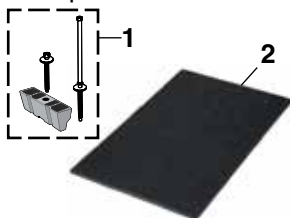
38-1366-F

Dual function tool – top brush cleans battery terminals and bottom brush cleans battery posts.

PART	DESCRIPTION	PRICE
38-1366-F	POST & TERMINAL CLEANER	\$5.95

## Battery Tray Components

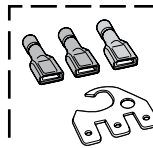
1997-06 Expedition



Battery Mat is made from polypropylene needle punch felt which traps and neutralizes battery acid. The Battery Mat is safe to handle and takes only minutes to install.

PART	ILL#	DESCRIPTION	PRICE
49-7557	(1)	BATTERY HOLD DOWN SET	\$4.95
38-1039-F	(2)	BATTERY MAT-BLK 8"X12"	\$7.95

## Battery Tap Accessory Circuit Kit



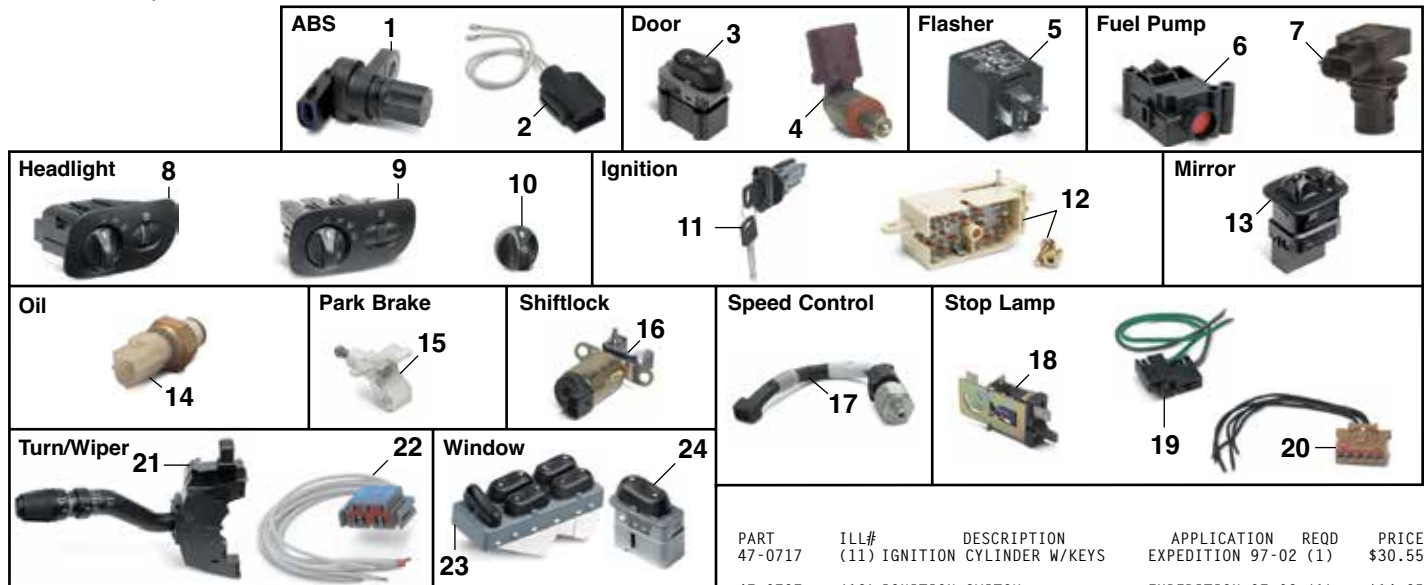
Battery Tap is an easy and reliable way to make direct connections at the battery with up to three new additional circuits. Designed to fit positive and/or negative battery terminals. Kit contains one tap and three crimp connectors. The Battery Tap can be stacked to provide additional connection points or can be attached to vehicle frame for additional grounding points.

PART	DESCRIPTION	PRICE
36-0847-F	TAP KIT-TOP POST	\$5.95



## Switches and Sensors

1997-02 Expedition



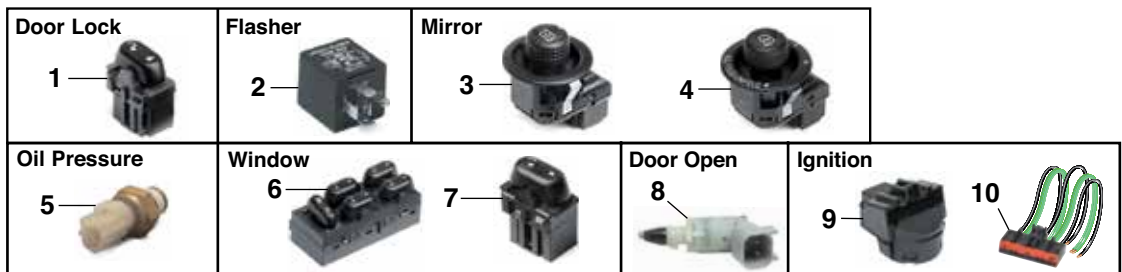
PART	ILL#	DESCRIPTION	APPLICATION	REQD	PRICE
47-0554	(1)	ABS SPEED SENSOR-ON AXLE	EXPEDITION 97-02 (1)		\$14.95
47-1369	(2)	SOCKET-ABS SENSOR	EXPEDITION 97-02 (1)		\$5.95
47-0001	(3)	DOOR LOCK SWITCH-LH	EXPEDITION 97-98 (1)		\$99.95
47-0000		DOOR LOCK SWITCH-RH	EXPEDITION 97-98 (1)		\$84.95
47-0614	(4)	DOOR OPEN WARNING	EXPEDITION 97 (4)		\$23.25
50-8117		DOOR OPEN WARNING	EXPEDITION 98-01 (4)		\$13.95
47-0596	(5)	FLASHER	EXPEDITION 97-02 (1)		\$12.95
47-0858	(6)	FUEL PUMP SHUTOFF SWITCH	EXPEDITION 97-02 (1)		\$54.95
40-1959	(7)	FUEL VAPOR PRESSURE SENSOR	EXPEDITION 97-02 (1)		\$69.95
47-0050	(8)	HEADLIGHT SWITCH-W/KNOB "A"	EXPEDITION 97-98 (1)		\$97.75
47-0052		HEADLIGHT SWITCH-W/KNOB "B"	EXPEDITION 97-98 (1)		\$193.25
47-0053		HEADLIGHT SWITCH-W/KNOB "C"	EXPEDITION 97-98 (1)		\$206.75
47-0056		HEADLIGHT SWITCH-W/KNOB "B"	EXPEDITION 99 (1)		\$159.95
47-0060	(9)	HEADLIGHT SWITCH-W/KNOB "B"	EXPEDITION 00-02 (1)		\$67.65
47-0061		HEADLIGHT SWITCH-W/KNOB "C"	EXPEDITION 00-02 (1)		\$96.95
47-0059		HEADLIGHT SWITCH-W/KNOB "D"	EXPEDITION 00-02 (1)		\$109.95
47-0078	(10)	KNOB-HEADLIGHT SWITCH	EXPEDITION 97-02 (1)		\$6.45

PART	ILL#	DESCRIPTION	APPLICATION	REQD	PRICE
47-0717	(11)	IGNITION CYLINDER W/KEYS	EXPEDITION 97-02 (1)		\$30.55
47-0737	(12)	IGNITION SWITCH	EXPEDITION 97-02 (1)		\$14.25
47-0030	(13)	MIRROR SWITCH	EXPEDITION 97-99 (1)		\$17.95
47-0944	(14)	OIL PRESSURE SWITCH	EXPEDITION 97-02 (1)		\$9.95
47-0843	(15)	PARK BRAKE RELEASE SWITCH	EXPEDITION 97-02 (1)		\$16.55
47-0970	(16)	SHIFTLOCK ACTUATOR-COLUMN	EXPEDITION 97-02 (1)		\$49.95
47-1370	(17)	SPEED CONTROL SWITCH	EXPEDITION 97-02 (1)		\$24.95
47-0643	(18)	STOP LAMP SWITCH	EXPEDITION 97-98 (1)		\$8.95
47-3599	(19)	SOCKET-STOP LAMP SWITCH	EXPEDITION 97-98 (1)		\$4.45
47-3613	(20)	SOCKET-STOP LAMP SWITCH	EXPEDITION 99-02 (1)		\$15.95
47-0844	(21)	TURN/WIPER SWITCH	EXPEDITION 99-02 (1)		\$79.95
47-3595	(22)	SOCKET-SWITCH	EXPEDITION 97-98 (1)		\$9.95
47-0098	(23)	WINDOW SWITCH-LH	EXPEDITION 99-02 (1)		\$109.95
47-0081	(24)	WINDOW SWITCH-RH	EXPEDITION 97-98 (1)		\$44.95
47-0081		WINDOW SWITCH-REAR	EXPEDITION 97-98 (2)		\$44.95
47-0083		WINDOW SWITCH-RH	EXPEDITION 99-02 (1)		\$42.95
47-0083		WINDOW SWITCH-REAR	EXPEDITION 99-02 (2)		\$42.95

Note: "A" For models without fog lights and without automatic headlights.  
 "B" For models with fog lights and without automatic headlights.  
 "C" For models with fog lights and with automatic headlights.  
 "D" For models without fog lights and with automatic headlights.

## Switches and Sensors

2003-06 Expedition



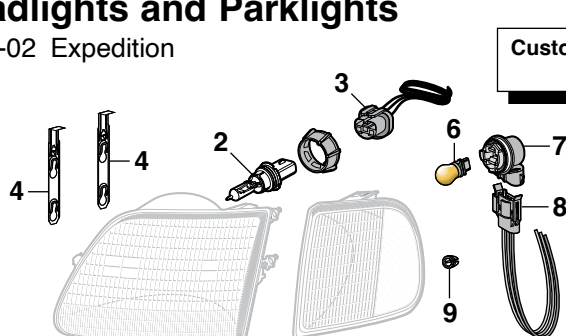
PART	ILL#	DESCRIPTION	APPLICATION	REQD	PRICE
47-0009	(1)	DOOR LOCK SWITCH-LH	EXPEDITION 03-06 (1)		\$30.95
47-0008		DOOR LOCK SWITCH-RH	EXPEDITION 03-06 (1)		\$24.95
47-0596	(2)	FLASHER	EXPEDITION 03-06 (1)		\$12.95
47-0034	(3)	MIRROR SWITCH	"A" EXPEDITION 05-06 (1)		\$21.25
47-0035	(4)	MIRROR SWITCH	"B" EXPEDITION 05-06 (1)		\$17.95
47-0944	(5)	OIL PRESSURE SWITCH	EXPEDITION 03-06 (1)		\$9.95
47-0108	(6)	WINDOW SWITCH-LH	EXPEDITION 03-06 (1)		\$29.95
47-0109	(7)	WINDOW SWITCH-RH	EXPEDITION 03-06 (1)		\$19.95

PART	ILL#	DESCRIPTION	APPLICATION	REQD	PRICE
47-0109		WINDOW SWITCH-REAR	EXPEDITION 03-06 (2)		\$19.95
44-0616	(8)	DOOR JAMB SWITCH-LH	EXPEDITION 04-06 (1)		\$22.25
44-0617		DOOR JAMB SWITCH-RH	EXPEDITION 04-06 (1)		\$6.45
44-0652	(9)	IGNITION STARTER SWITCH	EXPEDITION 03-06 (1)		\$27.95
44-0307	(10)	SOCKET-IGNITION SWITCH	EXPEDITION 03-06 (1)		\$69.95

Note: "A" For models without power folding mirrors.  
 "B" For models with power folding mirrors.

## Headlights and Parklights

1997-02 Expedition



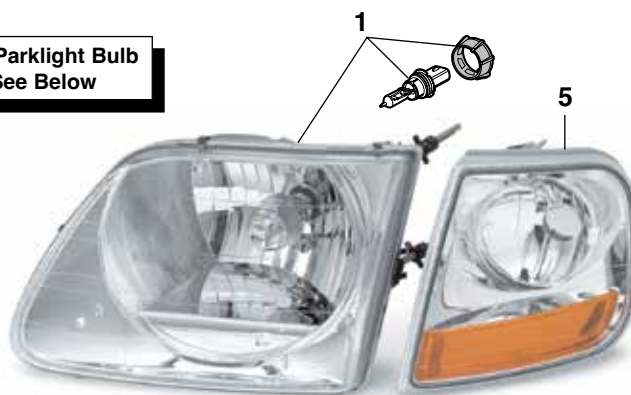
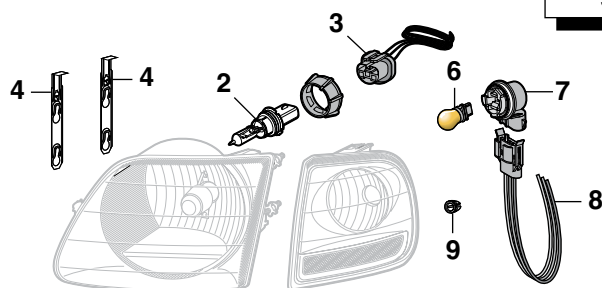
For More Information on Superwhite Headlight Bulb Set and Blue-Coated Headlight Bulbs See Below

PART	ILL#	DESCRIPTION	APPLICATION	REQD	PRICE
47-4722	(1)	HEADLIGHT ASSEMBLY-LH	EXPEDITION 97-02	(1)	\$34.95
47-4723		HEADLIGHT ASSEMBLY-RH	EXPEDITION 97-02	(1)	\$34.95
47-0246	(2)	BULB-HEADLIGHT-WHITE	EXPEDITION 97-02	(2)	\$5.95
36-0294-F		BULB-HEADLIGHT-BLUE	EXPEDITION 97-02	(2)	\$4.95
36-0298-F		SUPERWHITE BULB SET	EXPEDITION 97-02	(1)	\$15.95
47-0260	(3)	SOCKET-HEADLIGHT BULB	EXPEDITION 97-02	(2)	\$1.95
40-0992	(4)	HEADLIGHT RETAINER	EXPEDITION 97-02	(4)	\$19.95

PART	ILL#	DESCRIPTION	APPLICATION	REQD	PRICE
47-4330	(5)	PARKLIGHT ASSEMBLY-LH	EXPEDITION 97-02	(1)	\$10.95
47-4331		PARKLIGHT ASSEMBLY-RH	EXPEDITION 97-02	(1)	\$10.95
47-0212	(6)	BULB-PARKLIGHT-AMBER	EXPEDITION 97-02	(2)	\$1.49
36-0276-F		CUSTOM BULB SET-AMBER	PARKLIGHT 97-02	(1)	\$7.95
50-8206	(7)	SOCKET-PARKLIGHT BULB	EXPEDITION 97-02	(2)	\$6.95
50-8271	(8)	SOCKET-PARKLIGHT	EXPEDITION 97-02	(2)	\$7.95
50-0512	(9)	RETAINER-PARKLIGHT	EXPEDITION 97-02	(2)	\$7.95

## Headlights and Parklights

1997-02 Expedition



For More Information on Superwhite Headlight Bulb Set and Blue-Coated Headlight Bulbs See Below

PART	ILL#	DESCRIPTION	APPLICATION	REQD	PRICE
47-4724	(1)	HEADLIGHT ASSEMBLY-LH	EXPEDITION 97-02	(1)	\$39.95
47-4725		HEADLIGHT ASSEMBLY-RH	EXPEDITION 97-02	(1)	\$39.95
47-0246	(2)	BULB-HEADLIGHT-WHITE	EXPEDITION 97-02	(2)	\$5.95
36-0294-F		BULB-HEADLIGHT-BLUE	EXPEDITION 97-02	(2)	\$4.95
36-0298-F		SUPERWHITE BULB SET	EXPEDITION 97-02	(1)	\$15.95
47-0260	(3)	SOCKET-HEADLIGHT BULB	EXPEDITION 97-02	(2)	\$1.95
40-0992	(4)	HEADLIGHT RETAINER	EXPEDITION 97-02	(4)	\$19.95

These lights are the original style for the 2001-04 F150 Lightning model.

They will fit all 1997-02 Expedition models.

PART	ILL#	DESCRIPTION	APPLICATION	REQD	PRICE
42-1615	(5)	CUSTOM PARKLIGHT SET	EXPEDITION 97-02	(1)	\$59.95
47-0212	(6)	BULB-PARKLIGHT-AMBER	EXPEDITION 97-02	(2)	\$1.49
36-0276-F		CUSTOM BULB SET-AMBER	PARKLIGHT 97-02	(1)	\$7.95
50-8206	(7)	SOCKET-PARKLIGHT BULB	EXPEDITION 97-02	(2)	\$6.95
50-8271	(8)	SOCKET-PARKLIGHT	EXPEDITION 97-02	(2)	\$7.95
50-0512	(9)	RETAINER-PARKLIGHT	EXPEDITION 97-02	(2)	\$7.95

## Custom Bulb Set ... for Parklights



Custom high-performance light bulbs feature the latest breakthrough in interference coating technology which gives a cool, iridescent appearance when unlit and street legal amber light when illuminated. Sold in sets of two.

## Halogen Blue-Coated Bulbs



36-0294-F

**Halogen Bulb Tech Tip:** Always handle halogen bulbs by the plastic base to prevent contaminants on the glass from shortening the life of the bulb.

Replace the white halogen bulbs with a halogen blue-coated bulb. Blue-coated bulb creates an intense white light, giving the cool look of HID (high intensity discharge) lighting without the high price; call or go online and order yours today!

## Superwhite Bulb Set Produces 30% More Light



36-0298-F

Superwhite headlight bulbs produce 30% more light while retaining the street legal wattage. Superwhite bulbs use a proprietary mixture of premium gases that includes Xenon, which cools the light filament, improving the efficiency and light output of the bulb, unlike standard halogen bulbs which use less efficient argon gas.

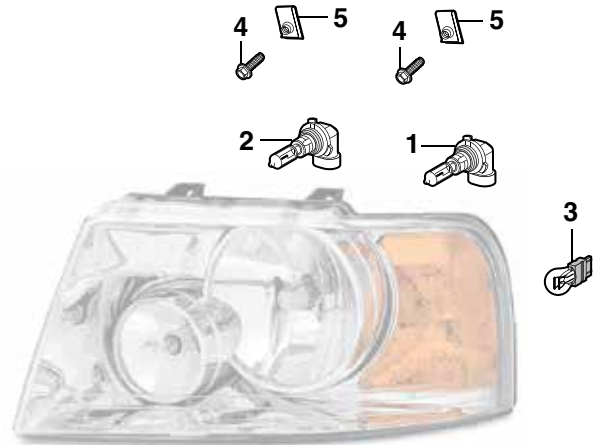
Superwhite bulbs operate in the Kelvin color temperature range of 4000-4200K, producing a brighter, white light. Traditional halogen bulbs operate at 2600-3000K, emitting a more yellowish appearance. Sold in sets of two. Call or go online and order yours today!

## Combination Headlight Components

2003-06 Expedition

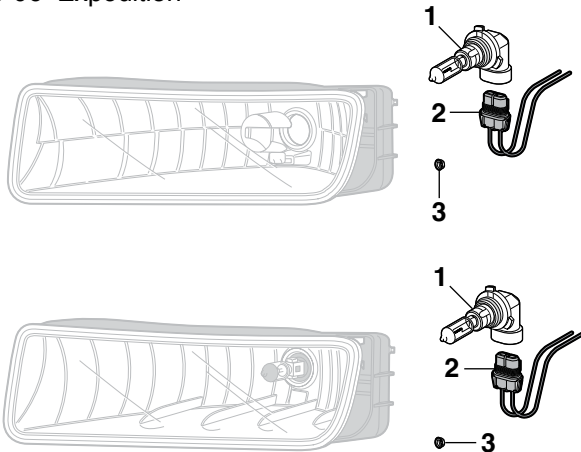
**For More Information on Superwhite Headlight Bulb Set and Blue-Coated Headlight Bulbs See Page 30**

PART	ILL#	DESCRIPTION	APPLICATION	REQD	PRICE
37-0200-F	(1)	BULB-LOW BEAM WHITE	EXPEDITION 03-06	(2)	\$3.75
37-0201-F	(2)	BULB-HIGH BEAM WHITE	EXPEDITION 03-06	(2)	\$3.75
36-0265-F		BULB-LOW BEAM BLUE	EXPEDITION 03-06	(2)	\$4.95
36-0266-F		BULB-HIGH BEAM BLUE	EXPEDITION 03-06	(2)	\$5.95
36-0311-F		SUPERWHITE BULB SET-LOW BEAM	EXPEDITION 03-06	(1)	\$9.95
36-0312-F		SUPERWHITE BULB SET-HIGH BEAM	EXPEDITION 03-06	(1)	\$12.95
47-0215	(3)	BULB-PARK/TURN CLEAR	EXPEDITION 03-06	(2)	\$1.35
55-0423-F	(4)	BOLT	EXPEDITION 03-06	(4)	\$ .95
29-0515-F	(5)	U-NUT	EXPEDITION 03-06	(4)	\$1.35



## Fog Light Components

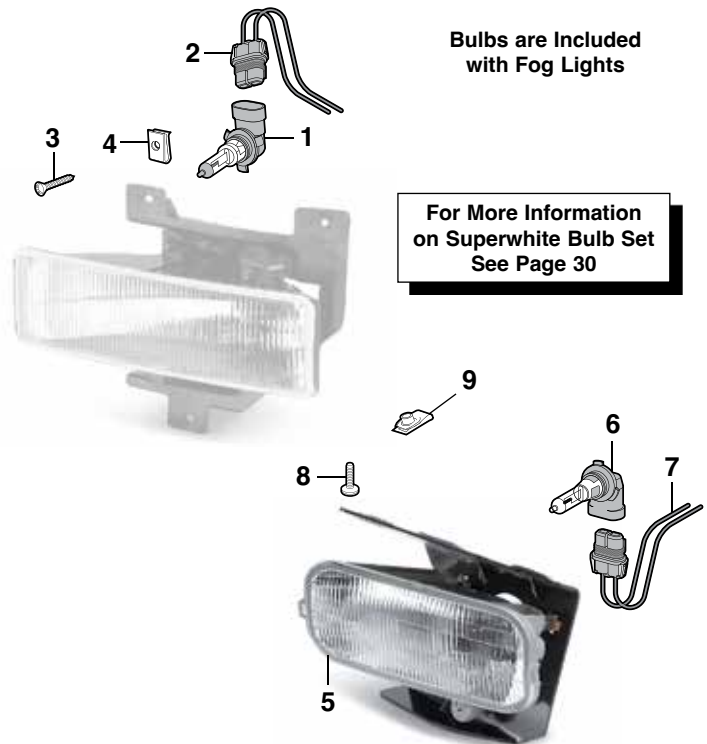
2003-06 Expedition



PART	ILL#	DESCRIPTION	APPLICATION	REQD	PRICE
37-0216-F	(1)	BULB-CLEAR	EXPEDITION 03-06	(2)	\$5.95
37-0406-F	(2)	SOCKET	EXPEDITION 03-06	(2)	\$1.95
31-0876-F	(3)	NUT	EXPEDITION 03	(6)	\$ .65
40-0804		NUT	EXPEDITION 04-06	(6)	\$ .65

## Fog Light - Factory Installed

1997-02 Expedition



**For More Information on Superwhite Bulb Set See Page 30**

## 4 EASY WAYS TO ORDER

**ONLINE**

**www.LMCtruck.com**  
*Fast, Simple & Safe!*

**PHONE**

**(800) 562-8782**

**FAX**

**(800) 541-8525** USA & Canada  
**(913) 599-0323** Worldwide

**MAIL**

**P.O. Box 14991**  
**Lenexa, KS 66285-4991**

**ORDER YOUR PARTS TODAY!**

PART	ILL#	DESCRIPTION	APPLICATION	REQD	PRICE
37-0200-F	(1)	BULB-CLEAR	EXPEDITION 97-98	(2)	\$3.75
36-0265-F		BULB-BLUE	EXPEDITION 97-98	(2)	\$4.95
36-0312-F		SUPERWHITE BULB SET	EXPEDITION 97-98	(1)	\$12.95
37-0405-F	(2)	SOCKET	EXPEDITION 97-98	(2)	\$1.95
55-0672-F	(3)	SCREW	EXPEDITION 97-98	(6)	\$ .95
40-0914	(4)	U-NUT	EXPEDITION 97-98	(6)	\$ .95
47-4732	(5)	FOG LIGHT ASSEMBLY-LH	EXPEDITION 99-02	(1)	\$54.95
47-4733		FOG LIGHT ASSEMBLY-RH	EXPEDITION 99-02	(1)	\$54.95
37-0216-F	(6)	BULB-CLEAR	EXPEDITION 99-02	(2)	\$5.95
37-0406-F	(7)	SOCKET	EXPEDITION 99-02	(2)	\$1.95
50-0235	(8)	BOLT W/WASHER	EXPEDITION 99-02	(6)	\$ .75
40-0940	(9)	U-NUT	EXPEDITION 99-02	(6)	\$ .95



## Custom Headlight Set

1997-02 Expedition



42-1581



For More Information on  
Superwhite Headlight Bulb Set  
and Blue-Coated Headlight Bulbs  
See Page 30



42-1581

Easy-to-install Custom Headlight Sets are designed to OE specifications and are easy upgrades that dramatically improve an SUV's look and style. White halogen headlight bulbs are included.

PART	DESCRIPTION	APPLICATION	REQD	PRICE
42-1581	CUSTOM HEADLIGHT SET	EXPEDITION 97-02 (1)		\$129.95
36-0298-F	SUPERWHITE BULB SET	EXPEDITION 97-02 (1)		\$15.95
36-0294-F	BULB-HEADLIGHT	BLUE 97-02 (2)		\$4.95
47-0246	BULB-HEADLIGHT	WHITE 97-02 (2)		\$5.95

## Custom Parklight Set

1997-02 Expedition



42-1615



Custom Parklight Bulb Set  
See Page 30

Replace your stock parking lights with this quality Custom Parklight Set.

Custom Parklight Set is 50 state legal when used with amber bulbs. Bulbs not included.

PART	DESCRIPTION	APPLICATION	REQD	PRICE
42-1615	CUSTOM PARKLIGHT SET	EXPEDITION 97-02 (1)		\$59.95
36-0276-F	CUSTOM PARKLIGHT BULB SET OF 2	AMBER 97-02 (1)		\$7.95
47-0212	BULB-PARKLIGHT	AMBER 97-02 (2)		\$1.49

## Heavy-Duty Headlight Harness



47-3662

Heavy-Duty Headlight Harness draws power directly from the battery whereas the original wiring draws its power from the headlight switch. Harness has separate relays for low and high beams and features OE-style headlight sockets for easy installation. No splicing or cutting required. Call or go online and order yours today!

**Not for use on models with daytime running lights.**

PART	DESCRIPTION	APPLICATION	REQD	PRICE
47-3662	HEAVY-DUTY HEADLIGHT HARNESS	EXPEDITION 97-02 (1)		\$20.95
36-3592-F	REPLACEMENT RELAY-LOW/HIGH		(2)	\$4.45

## Projector Headlight Sets

1 Piece Projector Headlight Sets 42-1578 / 42-1579



### Superwhite Bulb Set Produces 30% More Light

Superwhite headlight bulbs produce 30% more light while retaining the street legal wattage. Superwhite bulbs use a proprietary mixture of premium gases that includes Xenon, which cools the light filament, improving the efficiency and light output of the bulb, unlike standard halogen bulbs which use less efficient argon gas.

Superwhite bulbs operate in the Kelvin color temperature range of 4000-4200K, producing a brighter, white light. Traditional halogen bulbs operate at 2600-3000K, emitting a more yellowish appearance. Sold in sets of two. Call or go online and order yours today!

### Custom Bulb Set ... for Parklights

Custom high-performance light bulbs feature the latest breakthrough in interference coating technology which gives a cool, iridescent appearance when unlit and street legal amber light when illuminated. Sold in sets of two.

For More Information on Superwhite Headlight Bulb Set and Blue-Coated Headlight Bulbs - See Page 30

Custom Parklight Bulb Set  
See Page 30



42-1578

Projector headlights focus the light pattern on the road farther than traditional headlights and the convex lens projects light more accurately on the road, giving better vision and minimum glare.

Low beam halogen light comes with Ion-coated lens giving a slight bluish light similar to Xenon or High Intensity Discharge (HID) lights found on many of today's sports cars.

LED Halo Rims circle the high beam, low beam and (5) low mounted LED lights. This easy upgrade will improve the style of your truck. White halogen headlight bulbs and amber parklight bulbs included.



42-1579

One-piece assembly to replace the  
OE two-piece Headlight/Parklight.

PART	DESCRIPTION	APPLICATION	REQD	PRICE	PART	DESCRIPTION	APPLICATION	REQD	PRICE
42-1578	PROJECTOR HEADLIGHT SET	CHROME	97-02 (1)	\$229.95	36-0311-F	SUPERWHITE BULB SET-HIGH BEAM	WHITE	97-02 (1)	\$9.95
42-1579	PROJECTOR HEADLIGHT SET	BLACK	97-02 (1)	\$229.95	37-0201-F	BULB-HIGH BEAM	WHITE	97-02 (2)	\$3.75
36-0316-F	SUPERWHITE BULB SET-LOW BEAM		97-02 (1)	\$5.95	36-0266-F	BULB-HIGH BEAM	BLUE	97-02 (2)	\$5.95
38-0374-F	BULB-LOW BEAM	WHITE	97-02 (2)	\$1.95	36-0276-F	CUSTOM PARKLIGHT BULB SET OF 2	AMBER	97-02 (1)	\$7.95
36-0264-F	BULB-LOW BEAM	BLUE	97-02 (2)	\$5.95	47-0212	BULB-PARKLIGHT	AMBER	97-02 (2)	\$1.49

## LED Backup Light Bar



Light will need to be wired into one of your reverse lights for a signal and grounded locally.

This LED Backup Light Bar easily bolts to the top of your license plate and wires into your existing reverse lights. The Backup Light Bar will bolt onto your vehicle's top two license plate mounts. It features a die-cast aluminum housing and is finished in a satin black powder coat.



PART	DESCRIPTION	APPLICATION	REQD	PRICE
37-7475-F	LED BACKUP LIGHT BAR	UNIVERSAL	(1)	\$69.95

## Custom Fog Light Set

1999-02 Expedition



Bulbs are included with Fog Lights



42-1619

Custom Fog Light Set provides a low, wide beam pattern for improved short-range vision in fog, rain or snow. Fog Lights are designed to OE specifications and are an easy upgrade that dramatically improves a truck's look and style. Easy to install. Complete assemblies include clear bulbs and mounting brackets.

PART	DESCRIPTION	APPLICATION	REQD	PRICE
42-1619	CUSTOM FOG LIGHT SET	EXPEDITION 99-02 (1)		\$109.95
37-0216-F	BULB-CLEAR	EXPEDITION 99-02 (2)		\$5.95
37-0406-F	SOCKET	EXPEDITION 99-02 (2)		\$1.95

## 4WD Bumper Fog Light and Driving Light Sets

1997-98 Expedition



Fog lights provide a low, wide beam pattern for improved short-range vision in fog, rain or snow. Driving lights provide a longer, more focused beam pattern for improved long-range vision at highway speeds.

Fog Lights and Driving Lights are OE quality and have an aluminum die-cast housing and three-tier protective finish coating, which makes the housing corrosion-free. State-of-the-art reflector, in combination with a strong semi-hardened crystal glass lens, gives maximum light output. Lights use a high efficiency halogen 12V 55W replaceable bulb and are OE quality, DOT and SAE approved and are legal for on road use.

For added style, replace the white halogen bulbs with halogen blue-coated bulbs. The blue-coated bulb creates an intense white light which is popular in today's new cars and trucks. Get the cool look of HID (high intensity discharge) without the high price. Call or go online and order yours today!

For More Information on Superwhite Bulb Set  
See Page 30



38-1265-F



38-1268-F

PART	DESCRIPTION	APPLICATION	REQD	PRICE
38-1265-F	BUMPER FOG LIGHT SET 2PC	4WD EXPEDITION 97-98 (AR)		\$80.95
38-1268-F	BUMPER DRIVING LIGHT SET 2PC	4WD EXPEDITION 97-98 (AR)		\$59.95
38-0374-F	HALOGEN BULB-WHITE	4WD EXPEDITION 97-98 (AR)		\$1.95
36-0264-F	HALOGEN BULB-BLUE	4WD EXPEDITION 97-98 (AR)		\$5.95
36-0316-F	SUPERWHITE BULB SET	4WD EXPEDITION 97-98 (AR)		\$5.95
38-1275-F	LIGHT WIRING KIT W/SWITCH	4WD EXPEDITION 97-98 (AR)		\$25.95

## LED Bolt Set for Your License Plate



LED Bolt Set contains chrome bolts which feature an integrated white LED that illuminates at a 90° angle. Ideal for use where extra light is needed. For 12-volt systems only.

PART	DESCRIPTION	REQD	PRICE
36-4506-F	LED LICENSE PLATE BOLT SET	(AR)	\$11.45



## Tail Light Components

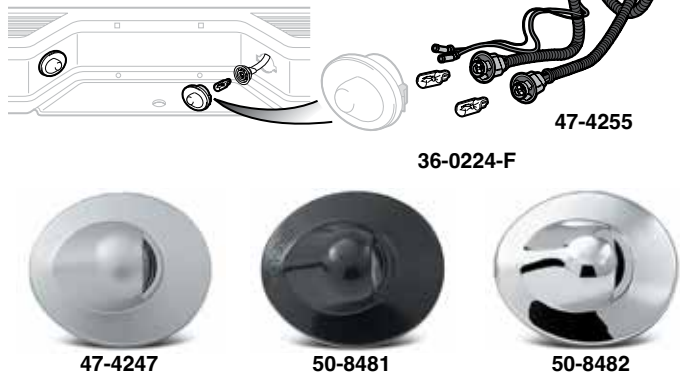
1997-02 Expedition



PART	ILL#	DESCRIPTION	APPLICATION	REQD	PRICE
40-0913	(1)	WELL NUT	EXPEDITION 97-02 (4)		\$ .85
40-0939	(2)	RETAINER	EXPEDITION 97-02 (6)		\$2.95
50-8200	(3)	BULB-STOP/TURN-CLEAR	EXPEDITION 97-02 (2)		\$ .95
47-0425	(4)	SOCKET-STOP/TURN BULB	EXPEDITION 97-02 (2)		\$6.95
50-8271	(5)	SOCKET-STOP/TURN	EXPEDITION 97-02 (2)		\$7.95
37-0213-F	(6)	BULB-BACKUP-CLEAR	EXPEDITION 97-02 (2)		\$1.55
50-8272	(7)	SOCKET-BACKUP BULB	EXPEDITION 97-02 (2)		\$8.45
50-8273	(8)	SOCKET-BACKUP	EXPEDITION 97-02 (2)		\$7.95

## Rear License Lamp

1997-02 Expedition



PART	DESCRIPTION	APPLICATION	REQD	PRICE
47-4247	LICENSE LAMP LENS-SILVER CLEAR	EXPEDITION 97-02 (2)		\$6.95
50-8481	LICENSE LAMP LENS-BLACK CLEAR	EXPEDITION 97-02 (2)		\$4.95
50-8482	LICENSE LAMP LENS-CHROME CLEAR	EXPEDITION 97-02 (2)		\$5.95
36-0224-F	BULB CLEAR	EXPEDITION 97-02 (2)		\$1.25
47-4255	LICENSE PLATE LAMP HARNESS	EXPEDITION 97-02 (1)		\$9.45

## Underhood Light

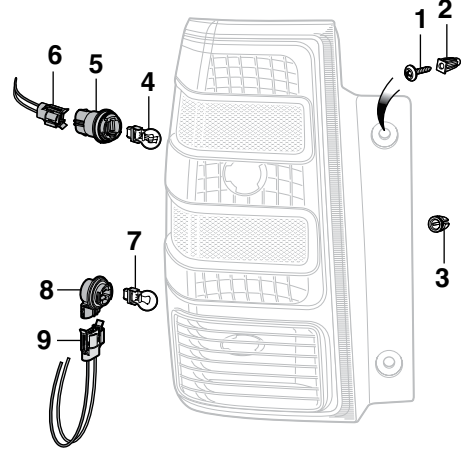
1997-02 Expedition



PART	DESCRIPTION	APPLICATION	REQD	PRICE
47-4296	UNDERHOOD LIGHT	EXPEDITION 97-02 (1)		\$24.95
47-0241	BULB-CLEAR	EXPEDITION 97-02 (1)		\$ .75

## Tail Light Components

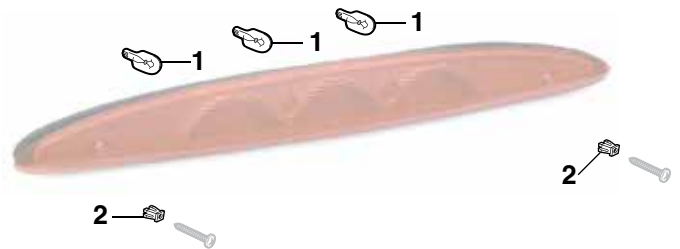
2003-06 Expedition



PART	ILL#	DESCRIPTION	APPLICATION	REQD	PRICE
29-0309-F	(1)	SCREW	EXPEDITION 03-06 (4)		\$ .65
40-0942	(2)	WELL NUT	EXPEDITION 03-06 (4)		\$2.95
50-0512	(3)	RETAINER	EXPEDITION 03-06 (4)		\$ .75
50-8200	(4)	BULB-STOP/TURN CLEAR	EXPEDITION 03-06 (2)		\$ .95
47-0425	(5)	SOCKET-STOP/TURN BULB	EXPEDITION 03 (2)		\$6.95
50-8276	(6)	SOCKET-STOP/TURN BULB	EXPEDITION 04-06 (2)		\$15.95
50-8271	(6)	SOCKET-STOP/TURN	EXPEDITION 03 (2)		\$7.95
37-0213-F	(7)	BULB-BACKUP CLEAR	EXPEDITION 03-06 (2)		\$1.55
50-8211	(8)	SOCKET-BACKUP BULB	EXPEDITION 03 (2)		\$8.95
50-8216	(8)	SOCKET-BACKUP BULB	EXPEDITION 04-06 (2)		\$8.95
50-8273	(9)	SOCKET-BACKUP	EXPEDITION 03 (2)		\$7.95

## Third Brake Light Components

1997-02 Expedition



PART	ILL#	DESCRIPTION	APPLICATION	REQD	PRICE
37-0206-F	(1)	BULB-THIRD BRAKE LIGHT	CLEAR	97-02 (3)	\$1.25
40-0913	(2)	WELL NUT-LAMP	EXPEDITION 97-02 (4)		\$ .85

## Mini Bulb Remover / Installer



Mini Bulb Remover/Installer features cushioned grips and rubber-coated ends for easy removal and safe installation of hard-to-reach bayonet, screw and wedge base bulbs.

PART	DESCRIPTION	REQD	PRICE
38-1398-F	MINI BULB REMOVER/INSTALLER	(1)	\$11.95

## Bug Shields

Bug Shields are made from durable impact-resistant materials and include all mounting hardware and installation instructions.

**Low Profile Bug Shield** features lower profile contoured styling to give your SUV a sleek wrap design.



49-3662

PART	DESCRIPTION	APPLICATION	REQD	PRICE
49-3662	BUG SHIELD-LOW PROFILE	CHROME EXPEDITION 97-02	(1)	\$129.95*

**Premium Bug Shield** features a contoured wrap-around aerodynamic shape for complete nose and fender protection.



49-3663

PART	DESCRIPTION	APPLICATION	REQD	PRICE
49-3663	BUG SHIELD-PREMIUM	SMOKE EXPEDITION 97-02	(1)	\$64.95*

\* Or \*\* after the sell price means your order will incur an Oversize Part Charge for each oversized part. \* Means extra charge will be \$20. \*\* Means extra charge will be \$50. Due to packing and/or transportation requirements, please allow additional time for delivery. Oversized Parts are not available for air delivery.

## Hair Pin Style Hood Pin Set



30-2550-F



30-2551-F

#30-2551-F  
Sold as Set of 2

PART	DESCRIPTION	REQD	PRICE
30-2550-F	HAIR PIN STYLE HOOD PIN SET	(1)	\$9.95
30-2551-F	HAIR PIN SET-CHROME 2PC	(1)	\$3.95

**FREE Truck Parts Catalogs**  
**Over 30,000 Parts & Accessories ... In Stock**

**Ford Trucks & SUVs 1948-2016**



**LMC TRUCK**

(800) 562-8782

Order Your Free Catalog Online at  
[www.LMCTRUCK.com](http://www.LMCTRUCK.com)

**Restore ... Maintain ... Customize®**

## Mud Guard Sets with "FORD" Logo

Protect your vehicle from rock chips, mud, tar and other road debris with these Ford logoed Mud Guard Sets. These universal mud guards feature a white Ford oval on a flexible black plastic mud guard. Mounting hardware is included. Not for use on models with dual rear wheels. Mud Guard Sets measure approximately 10" x 20" and 12" x 20". Hardware is not included to mount to Flareside rear fenders.



Ford Official Licensed Product is purchased from an authorized Ford Licensee.

PART	DESCRIPTION	APPLICATION	REQD	PRICE
48-6048	MUD GUARD SET OF 2 BLACK/WHITE	10" X 20"	(AR)	\$41.95
48-6049	MUD GUARD SET OF 2 BLACK/WHITE	12" X 20"	(AR)	\$39.95

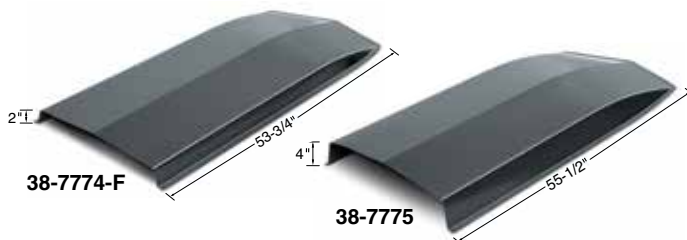
## Hoop Steps

Hoop Steps are made of corrosion-resistant, durable cast aluminum alloy and feature a safe non-slip diamond tread pattern step. They feature an exclusive multi-mount system designed for a precision fit and easy installation. Available in polished or black powder coat finish. Sold as a set of two.



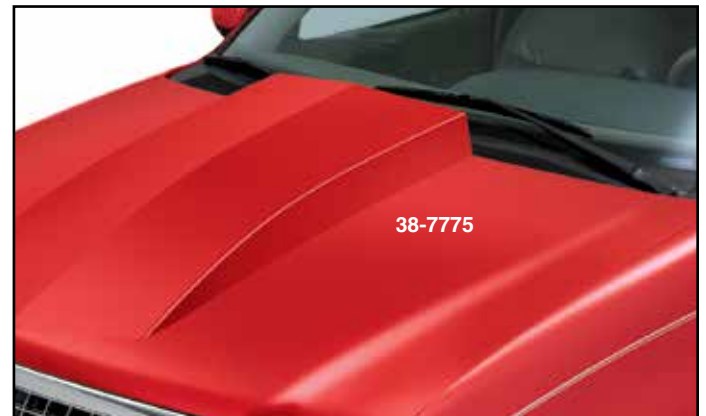
PART	DESCRIPTION	APPLICATION	REQD	PRICE
37-6340-F	HOOP STEPS-POLISHED	EXPEDITION 97-06	(AR)	\$103.99
37-6380-F	HOOP STEPS-BLACK	EXPEDITION 97-06	(AR)	\$103.99

## Steel Hood Scoops



These 2" and 4" Universal Fit Hood Scoops are stamped from 18-gauge steel and coated with an Electro Deposit Primer (EDP) for a smooth surface. Installation will require cutting and forming the scoop to match the length and curvature of your truck's hood. Welding and body work will be required prior to painting.

\* Or \*\* after the sell price means your order will incur an Oversize Part Charge for each oversized part. \* Means extra charge will be \$20. \*\* Means extra charge will be \$50. Due to packing and/or transportation requirements, please allow additional time for delivery. Oversized Parts are not available for air delivery.



PART	DESCRIPTION	PRICE
38-7774-F	HOOD SCOOP-STEEL 2" RISE	\$185.95*
38-7775	HOOD SCOOP-STEEL 4" RISE	\$149.95*



## Custom Flexible Chrome Trim ... Design it – Cut it – Install it



Add design accents and trim on your vehicle in traditional patterns or create a unique custom look with Flexible Universal Chrome Trim. Available in four widths, any combination of the kits can be used to achieve a desired look. Chrome ABS Trim is scratch-resistant, UV coated with a bright chrome finish and easily cuts with sharp scissors and features 3M™ adhesive peel-off backing. Pattern material is included for design and fitment of the flexible chrome laminate. Use provided sandpaper to clean up any edges or corners. Always double-check all measurements of materials needed for your design for your vehicle against available sizes of kits.

PART	DESCRIPTION	APPLICATION	REQD	PRICE
37-7280-F	CHROME ROCKER TRIM KIT	5PC 5" X 54"	(AR)	\$202.04
37-7281-F	CHROME ROCKER TRIM KIT	5PC 6" X 54"	(AR)	\$202.04
37-7282-F	CHROME ROCKER TRIM KIT	5PC 7" X 54"	(AR)	\$250.38
37-7283-F	CHROME ROCKER TRIM KIT	5PC 8" X 54"	(AR)	\$250.38
37-7284-F	CHROME PILLAR POST TRIM KIT	5PC 5" X 24"	(AR)	\$110.05
37-7285-F	CHROME FUEL DOOR SKIN KIT	1PC 8" X 8"	(AR)	\$34.28

## Deluxe Polishing Kit



Deluxe Polishing Kit can be used on aluminum, brass, copper, iron, steel, stainless steel and chrome, wood or even plastic. Kit includes: six 4-ounce bars of assorted polishing compounds, 12 assorted buffing wheels with 1/4" diameter shank to allow use with any standard electric drill and instructions with color-coded chart.

PART	DESCRIPTION	REQD	PRICE
38-1232-F	DELUXE POLISHING KIT	(1)	\$49.95

## Spitshine Tire Black ... Bring Back the Shine



**ColorBond Spitshine Tire Black** is a specially formulated paint, not a clear silicone dressing, designed to restore a military shine to faded and scuffed tires for a minimum of two months. Spitshine is not greasy or tacky, so it won't attract unsightly dirt and dust. Each 12 ounce can is easy to apply; first, clean tires of any existing dressings, silicones and dirt with ColorBond Prep/Cleaner. Mask the wheel or rim and apply in light coats. Reapply Spitshine Tire Black if tires become scuffed.

*Not for use on tires with white lettering or sidewalls.*

PART	DESCRIPTION	APPLICATION	PRICE
37-8370-F	COLORBOND SPITSHINE TIRE BLACK	12 OUNCE CAN	\$21.45
37-8399-F	COLORBOND PREP/CLEANER	12 OUNCE CAN	\$13.95

## Magnetic Glove Dispenser



Glove Dispenser features two large magnets that hold the dispenser in place. You can also mount it on a wall using the screw slots provided. Fits all common sizes of disposable rubber glove boxes, both 50 and 100 packs. The dispenser has 3 adjusting springs which can be adjusted as necessary to hold the various box sizes. Made of powder coated steel.

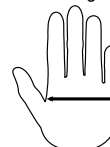
PART	DESCRIPTION	PRICE
42-0719	MAGNETIC GLOVE DISPENSER	\$25.55

## Disposable Black Nitrile Gloves



### Glove Sizing:

Place your hand on a flat ruler with your index finger next to the zero line:



3-1/2" = Medium  
4" = Large  
4-1/2" = X-Large

Disposable Black Nitrile Gloves are made from durable, powder-free 6 mil thick patented material for superior strength and tear-through resistance.

Gloves feature a fully textured finish for better grip with a two-ply construction that is tough enough to withstand exposure to grease, solvents and oil. Sold as a box of 100.

PART	DESCRIPTION	PRICE
42-0542-M	MEDIUM 100 GLOVE PACK	\$26.95
42-0542-L	LARGE 100 GLOVE PACK	\$26.95
42-0542-1X	X-LARGE 100 GLOVE PACK	\$26.95

## Chrome Lug Nuts



40-0928

PART	DESCRIPTION	APPLICATION	REQD	PRICE
40-0928	CHROME LUG NUT	12MM X 1.75 (AR)	(AR)	\$1.65
40-0929	CHROME LUG NUT	14MM X 2.00 (AR)	(AR)	\$1.65

Expedition	1997-00	5 Lug x 135MM Diameter	12MM x 1.75 Lug Nut
Expedition	2000-02	5 Lug x 135MM Diameter	14MM x 2.00 Lug Nut
Expedition	2003-06	6 Lug x 135MM Diameter	14MM x 2.00 Lug Nut

## Chrome Wheel Covers

Triple chrome plated Chrome Wheel Covers are constructed from high-impact ABS and engineered to match the shape and design of OE wheels for a perfect fit and instant transformation from stock to chrome. Wheel Covers simply snap into place over stock wheels.



PART	DESCRIPTION	APPLICATION	REQD	PRICE
49-4981	CHROME WHEEL COVER SET-16"	EXPEDITION 97-00	(1)	\$119.95

## Flip Socket Set

Flip Socket Set includes a comprehensive selection of reversible 1/2" drive sockets for a variety of lug nut sizes. The four piece set includes 3/4", 13/16", 7/8", 15/16", 19mm, and 21mm sockets and a 1/2" extension in a molded carrying case.



PART	DESCRIPTION	APPLICATION	PRICE
38-1378-F	FLIP SOCKET SET-4PC W/CASE	1/2" DRIVE	\$37.95

## Vintage Valve Stem Cap



This Vintage Stainless Steel Valve Stem Cap is the perfect finishing touch to your project and helps protect your expensive tire/wheel combo. Get some for all your projects...and your daily driver too!

PART	DESCRIPTION	PRICE
42-1015	VINTAGE VALVE STEM CAP-STAINLESS	\$1.45

## Polished Aluminum Modular Wheel

**Polished Aluminum Modular Wheel** features one-piece cast aluminum construction with an 8 hole modular design fully polished to a high luster finish.



48-3566

Lug Nuts are not included and must be purchased separately.

PART	DESCRIPTION	APPLICATION	REQD	PRICE
48-3566	POLISHED MODULAR WHEEL 17" X 8"	"A" LUG X135MM	(4)	\$249.95

Note: "A" Center cap included.



## Gorilla Wheel Locks ... Safety and Security



40-1050



40-1049

Gorilla Wheel Locks protect your wheels from theft because they are virtually impossible to remove without the matching security pattern key. Made from case-hardened steel with triple chrome plating and comes with a patented key wrench adaptor and registration.

Not for Original Style Alloy Wheels

PART	DESCRIPTION	APPLICATION	REQD	PRICE
40-1050	WHEEL LOCK SET	12MM X 1.75 CHROME	97-00 (1)	\$20.95
40-1049	WHEEL LOCK SET	14MM X 2.00 CHROME	00-06 (1)	\$22.95

## Center Cap and Lug Nuts



49-4968



49-4973



40-0930

PART	DESCRIPTION	APPLICATION	REQD	PRICE
49-4968	CHROME CENTER CAP SET-4PC	7" DIAMETER	97-02 (1)	\$89.95
49-4973	CHROME CENTER CAP SET-4PC	7-3/4" DIAMETER	99-00 (1)	\$89.95
40-0930	LUG NUT-OPEN END	EXPEDITION	97-00 (20)	\$4.75

## Key Fob and Key Fob Case

*All existing key fobs must be present and reprogrammed when programming the Key Fob. Key Fob is not compatible with two or four button key fobs.*



Battery Included



40-1325

40-1326

This complete three button Key Fob includes door lock, door unlock and panic button features. Installation is quick and easy. Instructions included.

Key Fob Case is an inexpensive replacement for a broken case or obscured button symbols. Front case, back case and rubber key pad included. (Circuit board not included.)

PART	DESCRIPTION	APPLICATION	REQD	PRICE
40-1325	KEY FOB-THREE BUTTON	EXPEDITION 98-02	(1)	\$37.95
40-1326	KEY FOB CASE-THREE BUTTON	EXPEDITION 98-02	(1)	\$9.95

**Electronic Musical Horn Plays 46 Sounds**

Electronic Musical Horn plugs into a cigarette lighter or power point to play sound three times and stop automatically or can be used as a loudspeaker with included microphone. Auxiliary input allows you to play music from your MP3 player or iPod. Command module is 7" wide by 3" high and mounts using included adhesive backed hook and loop patches. No drilling is required.

Adjustable rotary on/off volume control allows for easy sound level control, five bright LED lights on control module instantly indicate system mode and a 4" diameter weatherproof horn mounts under the hood. For 12 volt negative ground systems.

**3 Modes ... Animal, Alarm or Music ... 46 Different Sounds**

PART	DESCRIPTION	PRICE
38-1503-F	ELECTRONIC MUSICAL HORN	\$29.95

**Amplified Hide-Away Antenna**

Amplified Hide-Away Antenna allows you to get AM/FM reception without having to use standard fender-mount or window antenna. Features active magnetic field circuitry for enhanced radio reception and 105" cable allows installation almost anywhere in your vehicle. Connects to standard antenna plug and radio's power antenna wire (if equipped) or a switched 12V positive power source. Never worry about stolen or damaged antenna again.

PART	DESCRIPTION	PRICE
38-1145-F	HIDE-AWAY ANTENNA-AMPLIFIED	\$29.99

**Wiring/Tubing Grommet Assortment**

This 10-piece assortment of high-quality black rubber grommets protects wires and tubing from chafing when passed through sheet metal holes. Assortment contains: one each of 1/8", 3/8", 1/2", 5/8" I.D. and two each of 3/16", 1/4" and 5/16" I.D. grommets.

PART	DESCRIPTION	PRICE
30-1269-F	WIRING/TUBING GROMMET	\$3.95

**Quad 4 Amplifier****1-Year Warranty**

Efficient and powerful low distortion Class D Quad 4 Amplifier pushes 45 continuous watts into four channels for a total of 180 watts of pure listening enjoyment.

Features ultra-low current draw, less than .2% total harmonic distortion, frequency response of 10Hz-40kHz and 100Hz high-pass crossover frequency. 15 amp fuse included. Compact Size: 7.16" x 2.9" x 1.78"

Quad 4 Amplifier can be plugged directly into any Retro Sound radio for easy system integration or can be used with any aftermarket stereo with the included front and rear RCA connectors and low level inputs.

PART	DESCRIPTION	PRICE
38-8569-F	QUAD 4 AMPLIFIER	\$219.99

**Horns Make Your Presence Known**

Attractive set of Electric Twin Tone Horns. One high toned, the other low toned. Contains relay and mounting bracket.

PART	DESCRIPTION	PRICE
38-0372-F	TWIN TONE HORN SET	\$39.95

**Horns**

36-2152-F



36-2150-F

PART	DESCRIPTION	PRICE
36-2150-F	HORN UNIT-STANDARD-LOW	\$16.45
36-2152-F	HORN UNIT-STANDARD-HIGH	\$16.45

**Full Range Speaker Set**

Full Range Speaker Set is the perfect upgrade to add more thump behind the seat. Speaker enclosure is wedge shaped, made from MDF and protected by durable carpet. Enclosures are a mirror image of each other with each box containing one 8" woofer with port and a soft dome tweeter for 175 watts power handling, 60-22,000 Hz frequency response and 4 ohms impedance.

Acoustic batting is used to increase sound quality and performance. Chrome spring loaded terminals for easy wire installation. Dimensions: 16-1/4" wide, 13-1/2" high, 7-1/2" deep at bottom, 3-3/4" deep at top.

PART	DESCRIPTION	APPLICATION	REQD	PRICE
38-8599-F	FULL RANGE SPEAKER SET	175 WATT	(1)	\$214.95

**8" Powered Subwoofer 1-Year Warranty**

This 8-inch powered subwoofer is housed in a rigid die-cast aluminum chassis for better heat dissipation and powered by a built-in 100-watt amplifier with 200 watts max output. Has frequency response of 35-100Hz and total harmonic distortion of 0.08%.

Features include a fully adjustable crossover network between 50-100Hz, independent gain (volume) and 0 or 180-degree phase control. Subwoofer can be connected to radio with low level input RCA connectors or wired directly to radio through the high level input using supplied wiring harness. Includes mounting brackets, wiring harness and wired remote bass control. Compact 9" x 2.75" x 13.75" size weighing 9 lbs.

PART	DESCRIPTION	APPLICATION	PRICE
38-8527-F	POWERED SUBWOOFER-8"	100 WATT	\$199.99



## Receiver Hitch Parts ... For All Your Towing Needs

**Hitch Ball Mount** - Choose the best fitting Hitch Ball Mount with the right amount of rise or drop to even out the load. Raise or lower the height of your trailer ball by the amount listed for level towing.



PART	DESCRIPTION	APPLICATION	REQD	PRICE
37-7425-F	BALL MOUNT 3/4" RISE 2" DROP	7500 LB	(1)	\$22.95
37-7426-F	BALL MOUNT 2" RISE 4" DROP	7500 LB	(1)	\$23.95
37-7438-F	BALL MOUNT 4" RISE 6" DROP	7500 LB	(1)	\$39.95
37-7439-F	BALL MOUNT 6" RISE 8" DROP	5000 LB	(1)	\$44.95

5/8" Locking Hitch Pin protects any hitch mounted item from theft. Dust cap seals out dirt and water for trouble-free use. Includes two keys. 5/8" Hitch Pin and Clip are made from zinc-plated steel.



PART	DESCRIPTION	REQD	PRICE
37-7442-F	LOCKING HITCH PIN 5/8"	(1)	\$23.95
37-7441-F	HITCH PIN AND CLIP 5/8"	(1)	\$3.95

**Chrome Hitch Ball** features a 1" diameter shank and includes lock washer and nut. Trailer Balls are listed by diameter. Choose the diameter you need to match your trailer.



PART	DESCRIPTION	REQD	PRICE
37-7427-F	HITCH BALL 1-7/8" 3500 LB	(1)	\$9.95
37-7428-F	HITCH BALL 2" 6000 LB	(1)	\$11.95
37-7429-F	HITCH BALL 2-5/16" 7500 LB	(1)	\$12.95

## Vintage Metal Ford Coolers

Coolers feature embossed logos, insulated all-metal construction, removable mini tray and side-mount bottle opener. (Beverages not included.)

Measures 18"L x 9"W x 14"H.



**42-0950**  
Blue  
\$124.95

Ford Official Licensed Product is purchased from an authorized Ford Licensee.



**42-0951**  
Black  
\$124.95

## Switch-Ball™ Set

**Switch-Ball™ Set**  
- Constructed from premium grade steel with nickel-chrome plating, the Switch-Ball™ Set has an exclusive 'J' Groove design that ensures that the ball is installed on the shank and engaged by a coupler, making the hitching system safe and secure. Weight bearing capacity rests on shank to relieve stress away from the ball, thus freeing the coupler from friction and binding for a smoother and safer towing.



Change between three different trailer hitch ball sizes quickly and easily. No attachment pin to remove or tools required to switch ball sizes. Weight ratings for each hitch ball size are: 1-7/8" = 3,500 lbs., 2" = 6,000 lbs. and 2-5/16" = 8,000 lbs.

PART	DESCRIPTION	REQD	PRICE
37-7433-F	SWITCH-BALL SET	(1)	\$57.95

## Complete your towing package with a wiring harness.



PART	DESCRIPTION	APPLICATION	REQD	PRICE
50-5185	WIRING HARNESS	EXPEDITION 97-03	(1)	\$42.95
49-4155	HITCH SOCKET-7 WAY TRUCK END "A"	EXPEDITION 97-06	(1)	\$13.95
49-4156	HITCH PLUG-7 WAY TRAILER END "A"	EXPEDITION 97-06	(1)	\$8.25

Note: "A" For models with factory tow package.

## WeatherPak Wire Extractor Tools



These WeatherPak Wire Extractor Tools will save you time and hassle when servicing your vehicle's wiring system. Tools are engineered to easily release and remove OEM terminals from their WeatherPak housings, as well as releasing the lock tab on Packard 56 and Pak-Con terminals. This 3-piece set comes with a narrow pick (.05" wide), wide pick (.09") and tubular-shaped extraction tool. Handles are color-coded for easy identification.

PART	DESCRIPTION	PRICE
42-1398	WEATHERPAK WIRE EXTRACTOR TOOLS	\$9.95

## Wire Terminal Extractor Tools



This Wire Terminal Tool Kit is designed to release and extract wires from terminals without damage. The single blades have a bevel ground onto the end for working on small terminals found on newer vehicles. Red is specially designed for Pak-Con and WeatherPak terminals. Silver has prongs to depress the 'barbs' on conventional terminals. The handle slips over the probes to protect your hand as well as provide extra leverage. This complete kit comes in a sturdy blow-molded case for protection and long life and is a must-have for any do-it-yourselfer's toolbox.

PART	DESCRIPTION	PRICE
42-1399	WIRE TERMINAL TOOL KIT	\$53.95

## Dash Cover Set

1997-02 Expedition



44-5527-BL



Black

Gray

Dark Red

Tan

Made from durable ABS plastic and vacuum molded for a perfect fit, this Dash Cover Set comes with a dash cover, instrument panel cover and an RH airbag cover. Dash cover is attached with silicone (two tubes provided) and can be installed easily in minutes over your existing dash, no special tools needed. Will not crack under extreme temperatures.

PART	DESCRIPTION	APPLICATION	REQD	PRICE
44-5527-BL	DASH COVER SET - 3PC	BLACK EXPEDITION 97-02	(1)	\$339.45
44-5527-GR	DASH COVER SET - 3PC	GRAY EXPEDITION 97-02	(1)	\$339.45
44-5527-DR	DASH COVER SET - 3PC	DARK RED EXPEDITION 97-02	(1)	\$339.45
44-5527-TN	DASH COVER SET - 3PC	TAN EXPEDITION 97-02	(1)	\$339.45

## Custom Replacement Rear View Mirrors



38-5160-F

38-5170-F

PART	DESCRIPTION	APPLICATION	REQD	PRICE
38-5160-F	CHROME MIRROR 8" RIBBED BACK	DAY/NIGHT	(1)	\$30.95
38-5170-F	BILLET MIRROR 9" POLISHED	DAY/NIGHT	(1)	\$59.95
31-3600-F	MOUNTING ADAPTOR		(1)	\$ .95
38-0710-F	GLUE-MIRROR MOUNT			\$3.49

## Custom Pedal Pads and Trim

1997-02 Expedition



40-2268

40-2270

AT = Automatic Transmission  
MT = Manual Transmission

PART	DESCRIPTION	APPLICATION	REQD	PRICE
40-2270	PEDAL PAD-BRAKE & CLUTCH W/TRIM	MT	97-02 (2)	\$9.95
40-2268	PEDAL PAD-BRAKE W/TRIM	AT	97-02 (1)	\$9.95

## Embroidered Logo Hats

These low-profile cotton twill embroidered logo hats are comfortable and stylish. Ford logos are officially licensed by Ford Motor Company. One size fits all with the adjustable rear strap.

Ford Official Licensed Product is purchased from an authorized Ford Licensee.

**\$16.95**  
each



42-0646-PK

42-0646-BL

42-0646-LT

## Mesh Back Logo Hats



42-0647-CM

42-0647-BL

42-0647-LL

42-0647-OW

## Replacement Rear View Mirrors



Replacement Rear View  
Mirrors Include Mirror Mount

38-5122-F

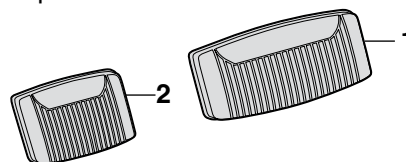
38-1951-F

To re-use original mirror mount, mounting adaptor #31-3600-F is required.

PART	DESCRIPTION	APPLICATION	REQD	PRICE
38-5121-F	BLACK MIRROR 8"	DAY/NIGHT	(1)	\$11.95
38-5120-F	BLACK MIRROR 10"	DAY/NIGHT	(1)	\$11.95
38-5122-F	BLACK MIRROR 12"	DAY/NIGHT	(1)	\$12.95
38-1951-F	CHROME MIRROR 9"	DAY/NIGHT	(1)	\$30.95
31-3600-F	MOUNTING ADAPTOR		(1)	\$ .95
38-0710-F	GLUE-MIRROR MOUNT			\$3.49

## Brake and Clutch Pedal Pads

1997-02 Expedition



AT = Automatic Transmission  
MT = Manual Transmission

PART	ILL#	DESCRIPTION	APPLICATION	REQD	PRICE
40-2253	(1)	PEDAL PAD-BRAKE	AT EXPEDITION 97-02	(1)	\$2.95
40-2254	(2)	PEDAL PAD-BRAKE & CLUTCH MT	EXPEDITION 97-02	(2)	\$2.95

## Dash Protector ... Prevents Fading and Cracking



### 5-Year Warranty

Dash Protector eliminates dash replacement and provides preventative care for the undamaged dash. Made from soft, velvety velour that has special UV inhibitors to block the sun and resist shrinking and fading. They are custom cut to fit your dash, and have pre-cut allowances for defrost vents, which makes installation easy using self-adhesive Velcro tabs.

PART	DESCRIPTION	APPLICATION	REQD	PRICE
49-5531-BL	DASH PROTECTOR-VELOUR "A" BLACK	EXPEDITION 97-02 (1)		\$44.95
49-5531-GR	DASH PROTECTOR-VELOUR "A" GRAY	EXPEDITION 97-02 (1)		\$44.95
49-5531-TN	DASH PROTECTOR-VELOUR "A" TAN	EXPEDITION 97-02 (1)		\$44.95
49-5532-BL	DASH PROTECTOR-VELOUR "B" BLACK	EXPEDITION 97-02 (1)		\$44.95
49-5532-GR	DASH PROTECTOR-VELOUR "B" GRAY	EXPEDITION 97-02 (1)		\$44.95
49-5532-TN	DASH PROTECTOR-VELOUR "B" TAN	EXPEDITION 97-02 (1)		\$44.95

Note: "A" Without sensor located on top of dash.  
"B" With sensor located on top of dash.

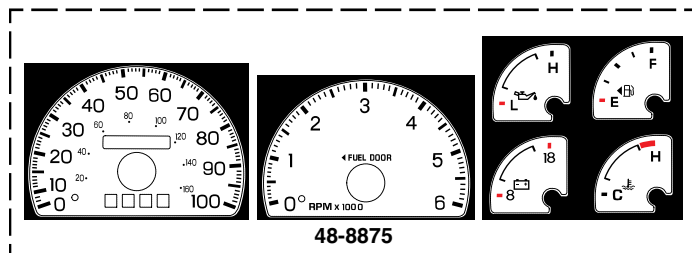
## Gauge Needle Paint

Gauge Needle Paint is a specially formulated fluorescent orange paint that comes in a .5 oz. bottle and includes an in-cap brush for easy application. No need to mask off any parts or worry about overspray.



PART	DESCRIPTION	PRICE
38-0761-F	GAUGE NEEDLE PAINT-ORANGE	\$9.95

## White Face Gauge Overlays



48-8875

White Face Gauge Overlays are computer printed on vinyl and pre-cut for a precise fit. They install easily over stock gauge faces without removing the gauge needles (except clock) and use the stock gauge lighting. No worries of broken needles or need for recalibrating gauges. Overlays will not wrinkle or bubble in hot or cold temperatures and can be removed with direct heat. Installation instructions included.

PART	DESCRIPTION	APPLICATION	REQD	PRICE
48-8875	WHITE GAUGE OVERLAY SET	EXPEDITION 97-98 (1)		\$27.95
48-8877	WHITE GAUGE OVERLAY SET W/TACH	EXPEDITION 99-02 (1)		\$27.95

## Truck Gauges ... A Functional New Look

2-1/16" Electric Short Sweep



Truck Gauges are available with an Ultra White Face with Chrome Bezel or Black Face with Black Bezel and include a white bulb, wired bulb socket, green and orange light filters, mounting bracket, mounting hardware and installation instructions.



- Oil Pressure Gauge reads 0-100 psi and comes with 1/8" NPT electric sender and 1/4" NPT brass adaptor.
- Water Temperature Gauge reads 100-250°F and comes with 1/8" NPT electric sender, 3/8" and 1/2" NPT brass adaptors.
- Voltmeter Gauge reads 8-18 Volts.

PART	DESCRIPTION	APPLICATION	PRICE
37-8280-F	OIL PRESSURE GAUGE	WHITE 0-100 PSI	\$27.95
37-8284-F	OIL PRESSURE GAUGE	BLACK 0-100 PSI	\$30.95
37-8281-F	WATER TEMPERATURE GAUGE	WHITE 100-250 DEGREES F	\$31.95
37-8285-F	WATER TEMPERATURE GAUGE	BLACK 100-250 DEGREES F	\$29.95
37-8282-F	VOLTMETER GAUGE	WHITE 8-18 VOLTS	\$21.95
37-8286-F	VOLTMETER GAUGE	BLACK 8-18 VOLTS	\$14.95

## Gauge Panels



These Steel Chrome and Black Gauge Panels make mounting your gauges quick and easy; includes attaching hardware. Gauges sold separately, see above.

PART	DESCRIPTION	APPLICATION	PRICE
38-8274-F	CHROME 2 GAUGE PANEL	FOR 2-1/16" GAUGES	\$11.95
38-8275-F	CHROME 3 GAUGE PANEL	FOR 2-1/16" GAUGES	\$12.95
38-8276-F	BLACK 1 GAUGE PANEL	FOR 2-1/16" GAUGE	\$9.95
38-8277-F	BLACK 2 GAUGE PANEL	FOR 2-1/16" GAUGES	\$12.95
38-8278-F	BLACK 3 GAUGE PANEL	FOR 2-1/16" GAUGES	\$12.95

## A-Pillar Gauge Pods



Gauges See Above



Full Pillar Gauge Pods offer a unique mounting solution for 2-1/16" gauges. Each pod is custom molded for an exact fit using black ABS plastic that mounts directly to the A-pillar without cutting. Pillar Pods can be painted to match interior. Gauges sold separately.

PART	DESCRIPTION	APPLICATION	REQD	PRICE
48-8641	FULL PILLAR GAUGE POD - DUAL	EXPEDITION 97-02 (1)		\$109.95
48-8643	FULL PILLAR GAUGE POD - TRIPLE	EXPEDITION 97-02 (1)		\$114.95



## DOJAMAT Retro Floor Mats

RETRO FLOOR MATS DONE RIGHT

Protect your truck's carpet with these Retro Rubber Floor Mats from Dojamat. Patterned after the very popular floor mats available in the '70s and '80s, they're the perfect final touch to your truck's interior.

They are made from 100% premium grade durable black rubber, top and bottom. Retro rubber floor mats feature several gripping areas for non-slip fit.

Each set comes with two floor mats.

**Floor Mats Measure**  
19-3/4" Wide x 27-1/2" Tall

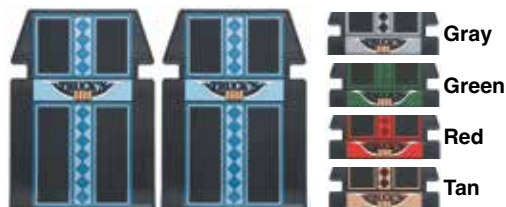


### "4x4" Floor Mat Sets



PART	DESCRIPTION	PRICE
44-5612-LL	"4X4" - BLUE	\$124.95
44-5612-GR	"4X4" - GRAY	\$124.95
44-5612-GN	"4X4" - GREEN	\$124.95
44-5612-RD	"4X4" - RED	\$124.95
44-5612-TN	"4X4" - TAN	\$124.95

### "TRUCK'N HORNS" Floor Mat Sets

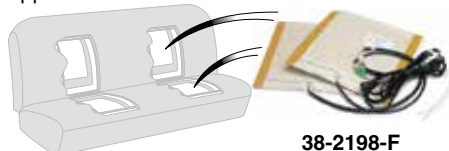


PART	DESCRIPTION	PRICE
44-5620-LL	"TRUCK'N HORNS" - BLUE	\$124.95
44-5620-GR	"TRUCK'N HORNS" - GRAY	\$124.95
44-5620-GN	"TRUCK'N HORNS" - GREEN	\$124.95
44-5620-RD	"TRUCK'N HORNS" - RED	\$124.95
44-5620-TN	"TRUCK'N HORNS" - TAN	\$124.95

## Seat Heater Kits ... Warm Yourself Up Before Your Truck Warms Up

Seat Heaters are constructed with patented carbon fiber heating elements which give consistent and controlled warmth. Paper thin heating elements are water-resistant and install between any seat cover material and seat cushion. Kit includes heating elements for seat back and bottom, three-way switch (Off/Low/High), pre-wired relay harness with fuse and instructions.

#38-2198-F contains two 11" x 11" heater elements. (One for seat back and one for seat bottom.) Ideal for use in bucket seat applications.



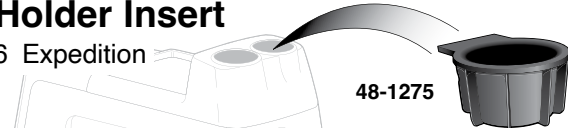
38-2198-F

#38-2199-F contains two 11" x 22" heater elements. (One for seat back and one for seat bottom.) Ideal for use in bench seat applications.

PART	DESCRIPTION	APPLICATION	REQD (AR)	PRICE
38-2198-F	SEAT HEATER KIT-11 X 11 ELEMENTS		(AR)	\$64.95
38-2199-F	SEAT HEATER KIT-11 X 22 ELEMENTS		(AR)	\$89.95

## Cup Holder Insert

2003-06 Expedition



48-1275

PART	DESCRIPTION	APPLICATION	REQD	PRICE
48-1275	CUP HOLDER INSERT-RUBBER	EXPEDITION 03-06 (2)	(2)	\$10.53

## "HORNS" Floor Mat Set



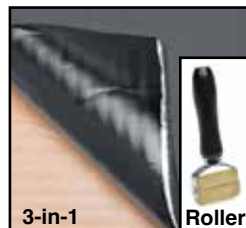
Tan

PART	DESCRIPTION	PRICE
44-5619-LL	"PLAIN HORNS" - BLUE	\$124.95
44-5619-GR	"PLAIN HORNS" - GRAY	\$124.95
44-5619-GN	"PLAIN HORNS" - GREEN	\$124.95
44-5619-RD	"PLAIN HORNS" - RED	\$124.95
44-5619-TN	"PLAIN HORNS" - TAN	\$124.95

## Sound Control Mat



**Sound Control Mat** reduces noise, vibration and heat created from the engine, road and structure of your vehicle. Can be applied to any interior surface area; cover as little as 25% of an area for a noticeable reduction. Each 2mm thick sheet consists of butyl rubber with a top layer of heat resistant aluminum that is easy to cut and conform to contoured surfaces, just peel and stick. Available in silver and black, each sheet measures 21" x 29".



**3-in-1 Sound Control Mat** combines the vibration absorption and heat resistant capabilities of the 2mm thick Sound Control Mat with an additional 5mm thick layer of foam for more efficient sound deadening. This makes it our most effective product for eliminating road noise and vibrations in your truck. Each sheet is 7mm thick and measures 19" x 31".

PART	DESCRIPTION	APPLICATION	PRICE
<b>1 Sheet</b>			
38-2819-F	SOUND CONTROL MAT-SILVER	4.22 SQUARE FEET	\$12.95
38-2722-F	SOUND CONTROL MAT-BLACK	4.22 SQUARE FEET	\$12.95
38-2726-F	3-IN-1 SOUND CONTROL MAT	4.27 SQUARE FEET	\$14.95

### 10 Sheet Packs

38-2809-F	SOUND CONTROL MAT-SILVER	42.2 SQUARE FEET	\$129.95
38-2723-F	SOUND CONTROL MAT-BLACK	42.2 SQUARE FEET	\$139.95
38-2727-F	3-IN-1 SOUND CONTROL MAT	42.7 SQUARE FEET	\$139.95

### Sound Control Mat Roller

Sound Control Mat Roller ensures proper adhesion and features a 2" wide rubber roller with a plastic handle.

38-2816-F	ROLLER-SOUND CONTROL MAT	2" WIDE	\$12.95
-----------	--------------------------	---------	---------

## Multi-Purpose Heat and Sound Insulation



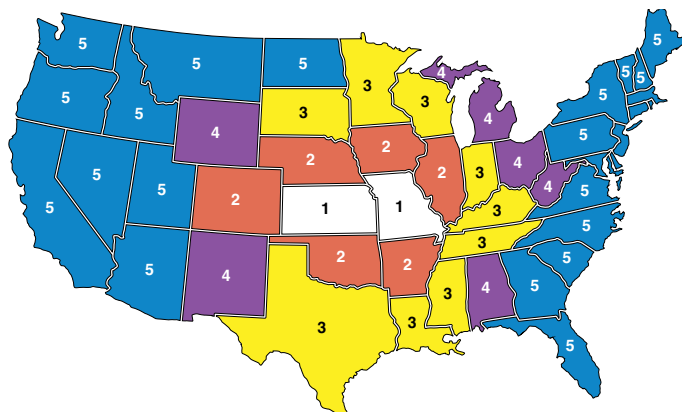
Uses Space Age technology to insulate against heat, cold and noise under hoods, carpeting, headliners, door panels, firewalls or seats as well as other household uses. This 4-foot x 6-foot sheet is made of 3/8" sound deadening fiber padding. Highly reflective aluminum is bonded on one side to achieve 97% reflection of radiant heat. Use this Multi-Purpose Insulation with Sound Control Mat for maximum sound deadening. Call or go online and order both today!

Use #38-0798-F Spray Adhesive and #38-0716-F Aluminum Tape or #42-0759 Weatherstrip Adhesive to easily install Insulation Material.

PART	DESCRIPTION	APPLICATION	PRICE
38-2829-F	MULTI-PURPOSE INSULATION	4FT X 6FT ROLL	\$32.95
38-0798-F	SPRAY ADHESIVE	10.5 OUNCE CAN	\$9.45
38-0716-F	ALUMINUM TAPE	2" X 30FT ROLL	\$3.95
42-0759	WEATHERSTRIP ADHESIVE-BLACK	5 OUNCE TUBE	\$8.75

### What You Need to Know About Shipping within the 48 Contiguous States

Shipping charges are based on the "Parts Total" on your order.



Order Parts Total	Zone 1	Zone 2	Zone 3	Zone 4	Zone 5
Up to \$ 10.00	\$ 5.00	\$ 5.00	\$ 5.00	\$ 5.00	\$ 5.00
\$ 10.01 to 25.00	8.00	8.00	8.00	8.00	8.00
25.01 to 50.00	11.00	11.00	11.00	11.00	11.95
50.01 to 100.00	16.50	16.50	16.50	17.50	18.75
100.01 to 150.00	24.50	25.00	26.50	27.50	28.75
150.01 to 250.00	31.50	32.25	34.50	36.25	38.50
250.01 to 350.00	35.75	36.50	38.25	41.50	43.25
350.01 to 500.00	38.50	40.75	42.50	44.75	47.25
500.01 to 1,000.00	44.75	46.25	48.50	49.75	51.25
1,000.01 to 1,250.00	62.00	64.75	68.00	70.00	72.00
1,250.01 to 1,500.00	75.50	77.75	82.00	84.00	86.50
1,500.01 to 1,750.00	90.00	93.50	98.50	100.00	104.00
1,750.01 to 2,000.00	108.00	110.50	120.00	125.00	130.00
2,000.01 to 2,499.99	110.00	115.75	125.50	135.00	145.00
2,500.00 and Up	Free Shipping				

If you are ordering Oversized Parts (indicated with a \* Or \*\* throughout this catalog), or if you are placing an extra large order, please allow for extra packing and delivery time.

In order to qualify for the free shipping, your entire \$2,500+ order must be placed at one time. We may have to split your shipment, but we will pick up the shipping charges.

**Customer Service Line: (800) 222-5664**  
**¿Habla Español? (855) 456-2288**

### What You Need to Know About Shipping to APO and FPO Addresses

We are thrilled to be able to ship to those who are serving our country; however, there are some limitations on these shipments. We are unable to ship Truck Freight items to you at this time. All orders will be shipped complete, via Insured Priority Mail through the USPS. Size limitations will apply. Please make sure before you place your order that what you are ordering will be accepted and is deliverable to you in your location.

### What You Need to Know About Shipping to Canada

Your orders will be shipped ground "Door to Door," which includes brokerage, duty and tax. Charges will be based on the value of your shipment. Document and preparation fees are included. Please call our customer service line for assistance.

### What You Need to Know About Shipping to Alaska, Hawaii and the U.S. Territories

Order Parts Total	Shipping to Alaska, Hawaii & U.S. Territories
Up to \$20.00	\$ 19.95
\$20.01 to 50.00	25.95
50.01 to 75.00	36.95
75.01 to 100.00	41.95
100.01 to 150.00	49.95
150.01 to 250.00	65.95
250.01 to 350.00	72.95
350.01 to 500.00	79.95
500.01 and Up	Quote ♦

♦ You will be contacted with charges.

**We reserve the right to ship the most economical way. If you need your order shipped in a specific manner, contact customer service for a customized quote.**

**Customer Service Line: (800) 222-5664**  
**¿Habla Español? (855) 456-2288**

This chart shows shipping charges on orders up to \$500. Parts must be 108 inches or less and weigh 70 pounds or less to qualify. If any part does not meet these qualifications, your order will be delivered by ground for additional charges.

All orders will ship complete. Any additional delivery charges will be added to your total as needed, including Oversize Part charges or overweight charges.

We will need a daytime phone number with your order. If there is a problem with your order, we will attempt to contact you three times. If we are unsuccessful, your order will be cancelled 5 days after that third failed attempt.

### What You Need to Know When Shipping Problems Occur

Please open your package(s) as soon as possible and make certain that everything is accounted for and nothing was damaged in shipment. Damaged shipments are the responsibility of the carrier and must be reported to the carrier within 15 days of receipt.

If the package looks damaged when it arrives, open it with the delivery person present, so that they can make an immediate report of damages and discrepancies. If the damage is not obvious at the time of delivery, or if the package was left for you by the shipping company, contact their customer service as soon as possible to make your claim.

On Truck Freight shipments, it is your responsibility to check your order and have the driver note any damage on the freight bill before you sign for your item(s).

Please keep all packing, packaging and contents until your claim has been settled with the shipping company.

### What You Need to Know About Shipping Internationally

All international orders ship complete. Shipping charges must be prepaid in U.S. funds. Brokerage, duties, taxes, and fees associated with the order are paid by the customer. We do not accept personal checks on international orders.